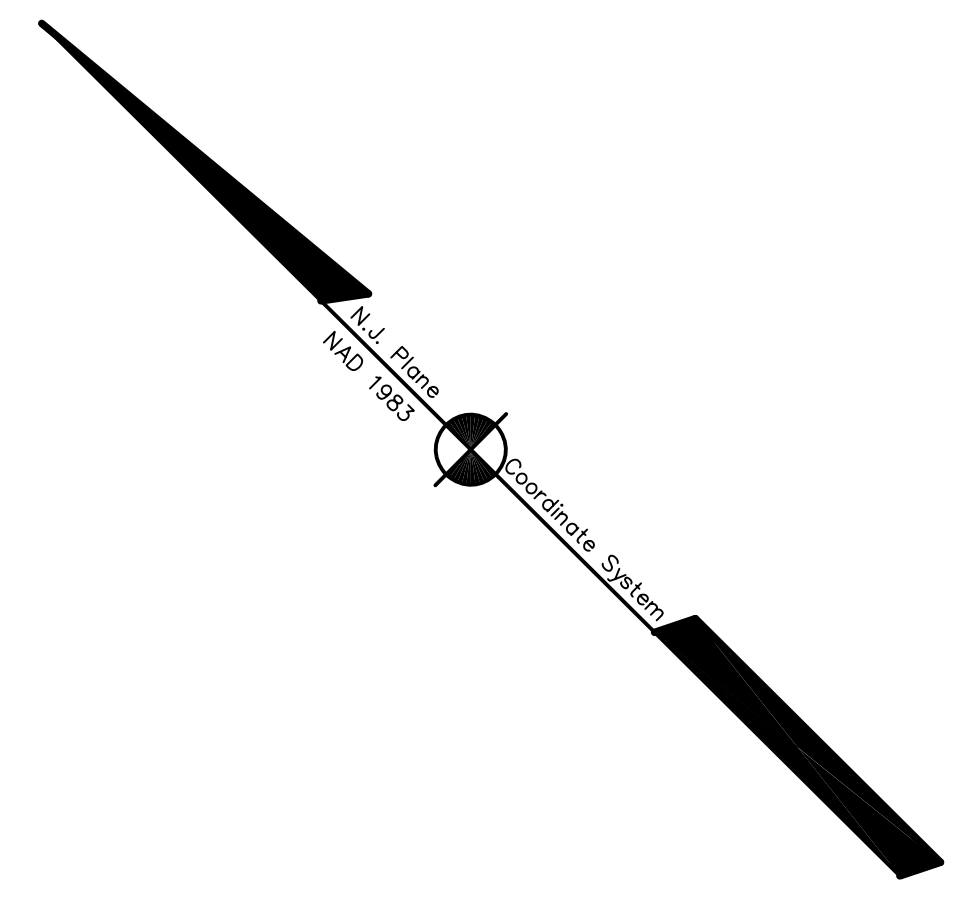
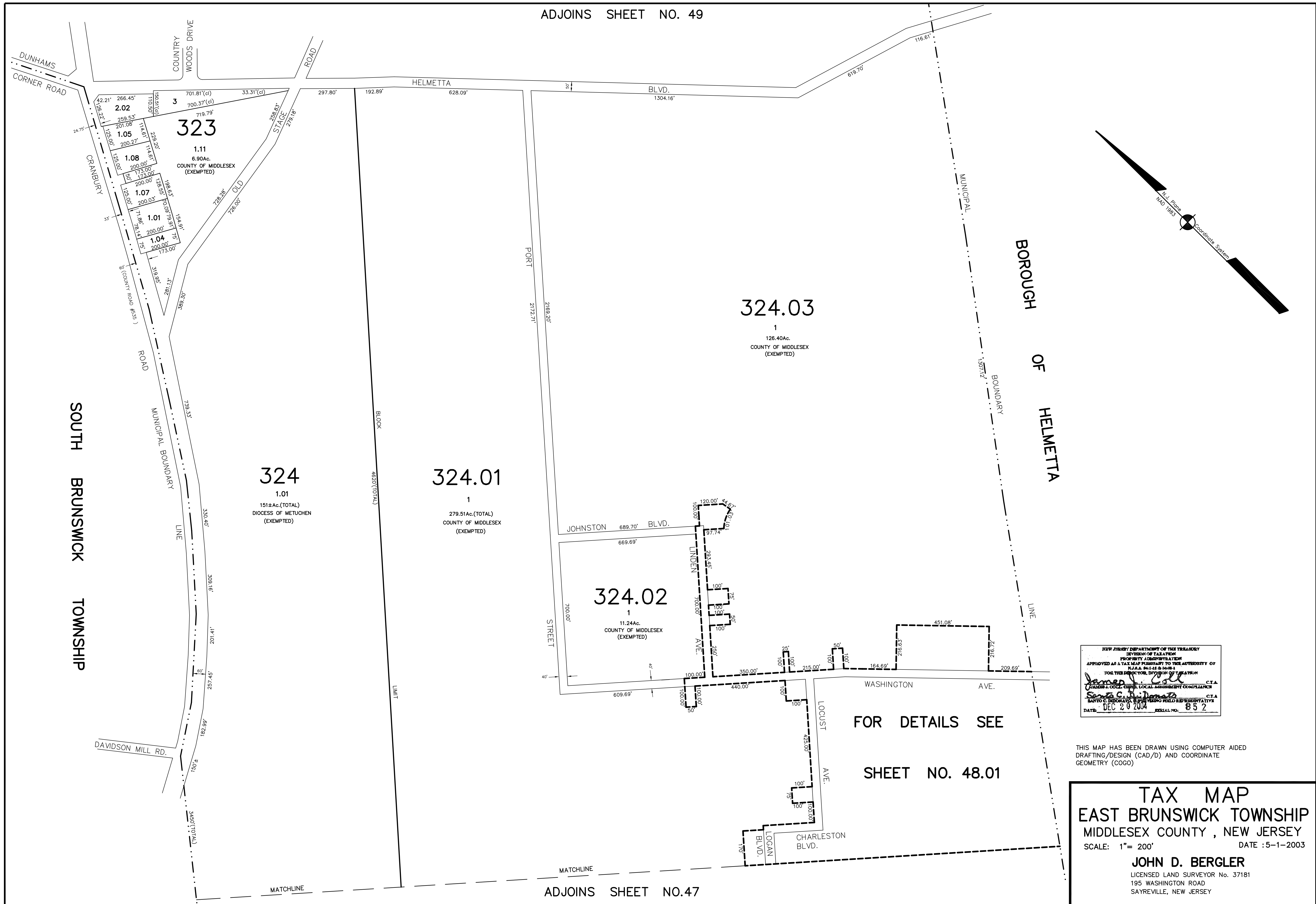


ADJOINS SHEET NO. 49



NEW JERSEY DEPARTMENT OF THE TREASURY
 DIVISION OF TAXATION
 PROPERTY ADMINISTRATION
 APPROVED AS A TAX MAP PURSUANT TO THE AUTHORITY OF
 P.L.R.A. §§ 1-11 & 1-12
 FOR THE DIRECTOR, DIVISION OF TAXATION
Jamery Cole C.T.A.
 TOWN & CO. CO., LOCAL ASSESSMENT COMPLIANCE
Santo C. DiDonato C.T.A.
 SANTO C. DI DONATO, REPRESENTATIVE
 DATE: DEC 28 2004 SERIAL NO.: 852

FOR DETAILS SEE
 SHEET NO. 48.01

THIS MAP HAS BEEN DRAWN USING COMPUTER AIDED
 DRAFTING/DESIGN (CAD/D) AND COORDINATE
 GEOMETRY (COGO).

TAX MAP
EAST BRUNSWICK TOWNSHIP
MIDDLESEX COUNTY, NEW JERSEY
 SCALE: 1"= 200' DATE :5-1-2003
JOHN D. BERGLER
 LICENSED LAND SURVEYOR No. 37181
 195 WASHINGTON ROAD
 SAYREVILLE, NEW JERSEY

ADJOINS SHEET NO.47