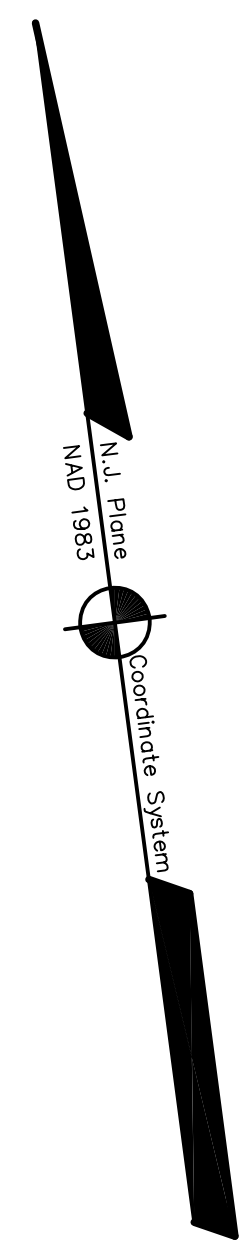
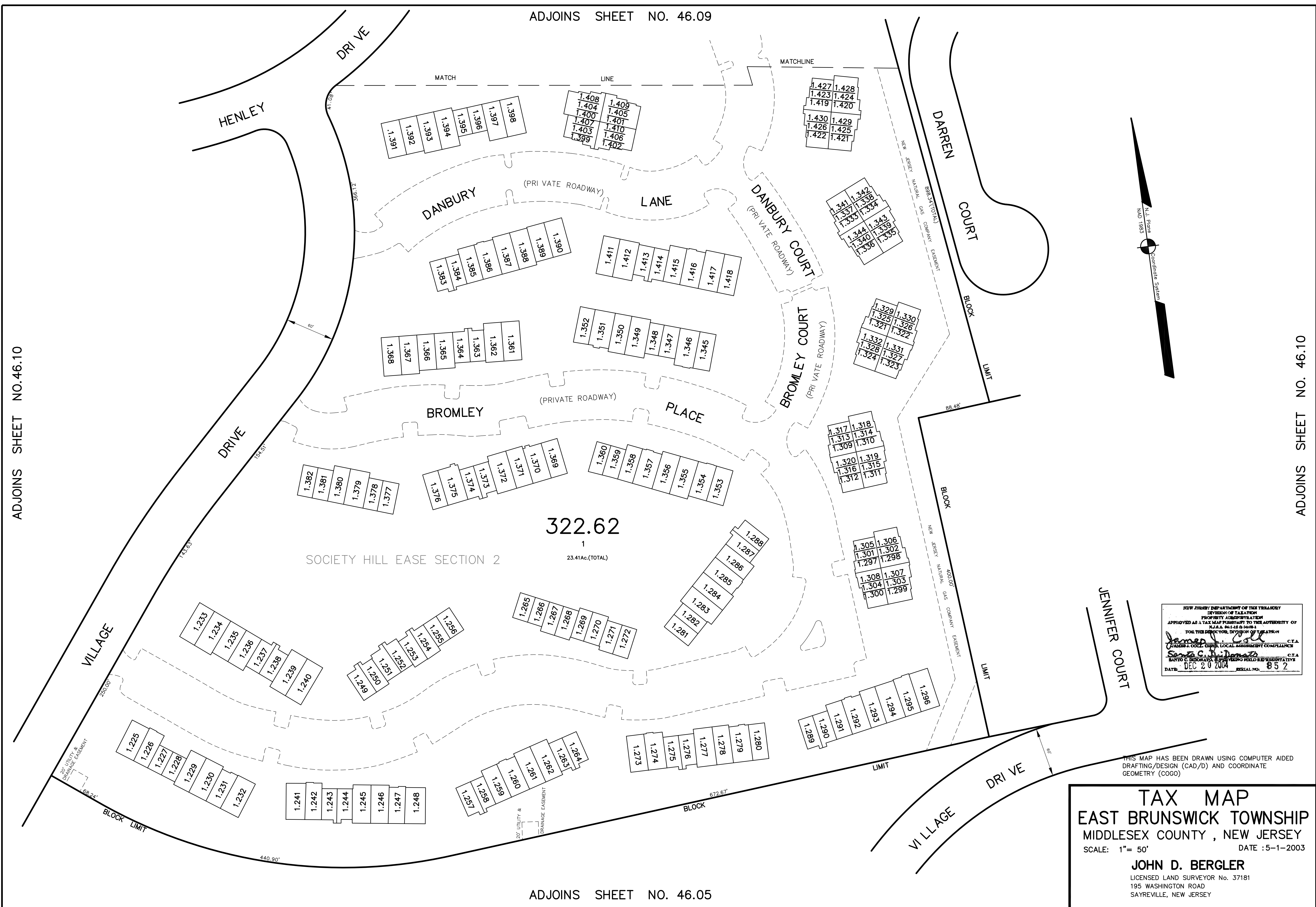


ADJOINS SHEET NO. 46.09

ADJOINS SHEET NO.46.10

ADJOINS SHEET NO. 46.10



NEW JERSEY DEPARTMENT OF TREASURY
DIVISION OF TAXATION
PROPERTY ADMINISTRATION
APPROVED AS A TAX MAP PURSUANT TO THE AUTHORITY OF
N.J.A.C. 17:27 & 17:28
FOR THE DIRECTOR, DIVISION OF TAXATION
Samuel J. DeLuca C.T.A.
SANTO C. BODORIAN, P.E. (PROFESSIONAL ENGINEER)
DATE: DEC 20 2004 SERIAL NO: 852

TAX MAP
EAST BRUNSWICK TOWNSHIP
MIDDLESEX COUNTY, NEW JERSEY
SCALE: 1" = 50'
DATE: 5-1-2003
JOHN D. BERGLER
LICENSED LAND SURVEYOR No. 37181
195 WASHINGTON ROAD
SAYREVILLE, NEW JERSEY

THIS MAP HAS BEEN DRAWN USING COMPUTER AIDED DRAFTING/DESIGN (CAD/D) AND COORDINATE GEOMETRY (COGO)

ADJOINS SHEET NO. 46.05