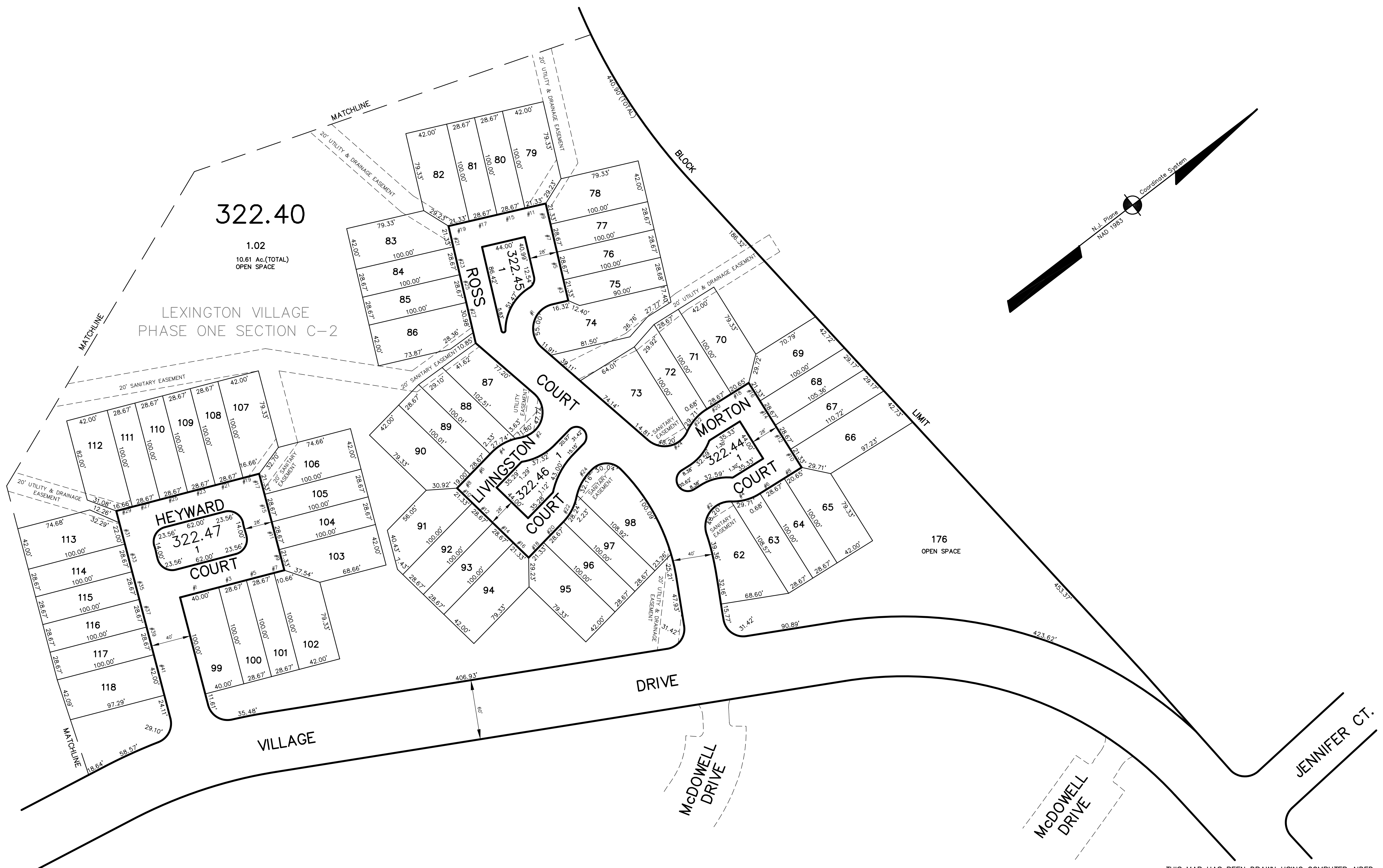


ADJOINS SHEET NO. 46.04

ADJOINS SHEET NO. 46.04

ADJOINS SHEET NO. 46.09



ADJOINS SHEET NO. 46.08

THIS MAP HAS BEEN DRAWN USING COMPUTER AIDED DRAFTING/DESIGN (CAD/D) AND COORDINATE GEOMETRY (COGO)

NEW JERSEY DEPARTMENT OF THE TREASURY
 DIVISION OF TAXATION
 PROPERTY ADMINISTRATION
 APPROVED AS A TAX MAP PURSUANT TO THE AUTHORITY OF
 P.L.A. 2013-10, R.S. 17:27
 FOR THE DIRECTOR, DIVISION OF TAXATION
James J. [Signature] C.T.A.
 JAMES J. COLE, CHIEF, LOCAL ASSESSMENT COMPLIANCE
Samuel C. [Signature] C.T.A.
 SAMUEL C. BODOLATO, REPRESENTATIVE FIELD REPRESENTATIVE
 DATE: DEC 20 2004 SERIAL NO. 852

TAX MAP
EAST BRUNSWICK TOWNSHIP
MIDDLESEX COUNTY, NEW JERSEY
 SCALE: 1" = 50' DATE: 5-1-2003
JOHN D. BERGLER
 LICENSED LAND SURVEYOR No. 37181
 195 WASHINGTON ROAD
 SAYREVILLE, NEW JERSEY