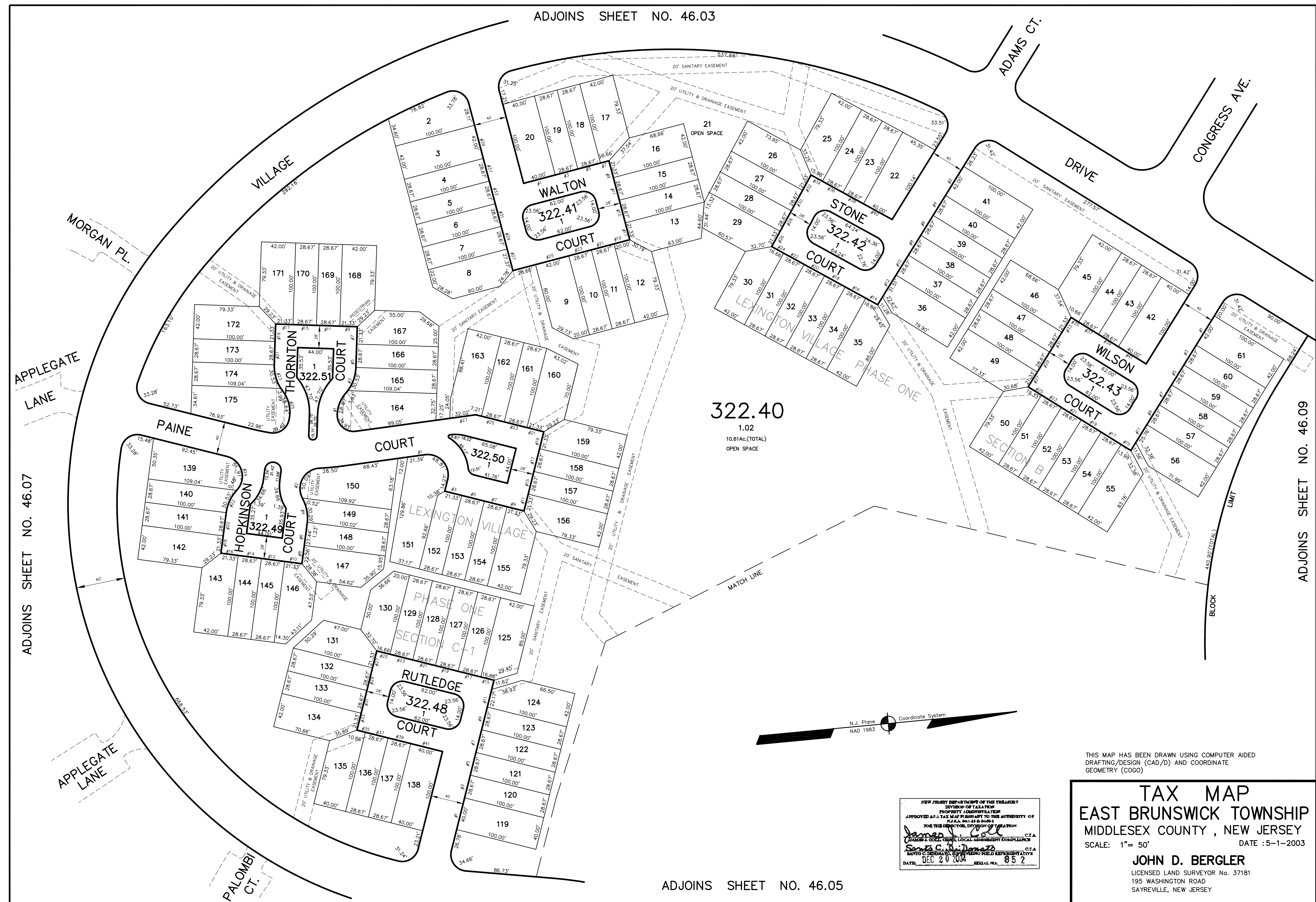
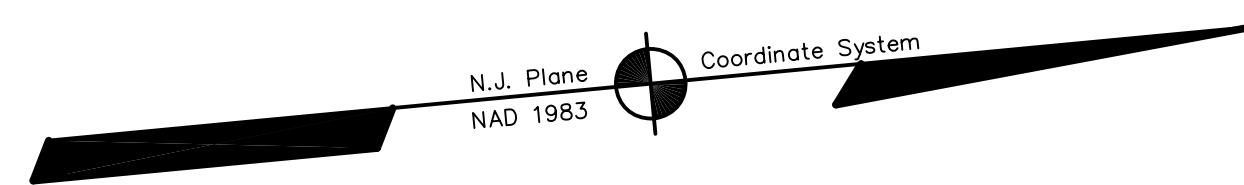


ADJOINS SHEET NO. 46.03



322.40  
 1.02  
 10.61Ac.(TOTAL)  
 OPEN SPACE



THIS MAP HAS BEEN DRAWN USING COMPUTER AIDED DRAFTING/DESIGN (CAD/D) AND COORDINATE GEOMETRY (COGO)

NEW JERSEY DEPARTMENT OF THE TREASURY  
 DIVISION OF TAXATION  
 PROPERTY ADMINISTRATION  
 APPROVED AS A TAX MAP PURSUANT TO THE AUTHORITY OF  
 N.J.A.C. 17:27 & 17:28  
 FOR THE DIRECTOR, DIVISION OF TAXATION  
 JAMES J. COLE, C.T.A.  
 COUNTY & LOCAL ASSESSMENT COMPLYING  
 JOHN D. BERGLER, C.T.A.  
 DATE: DEC 20 2004 SERIAL NO. 852

**TAX MAP**  
**EAST BRUNSWICK TOWNSHIP**  
**MIDDLESEX COUNTY, NEW JERSEY**  
 SCALE: 1" = 50'  
 DATE: 5-1-2003  
**JOHN D. BERGLER**  
 LICENSED LAND SURVEYOR NO. 37181  
 195 WASHINGTON ROAD  
 SAYREVILLE, NEW JERSEY

ADJOINS SHEET NO. 46.05