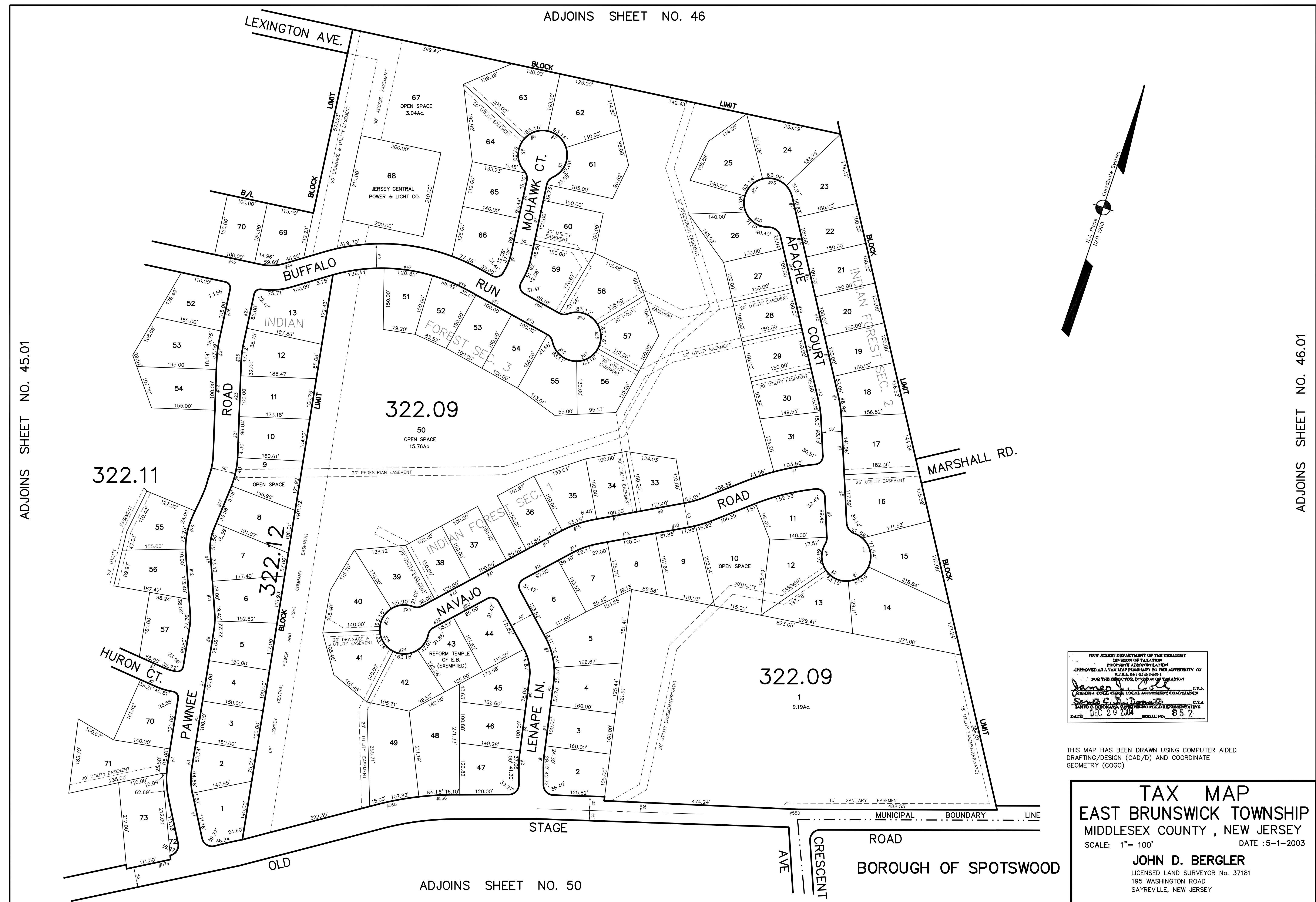
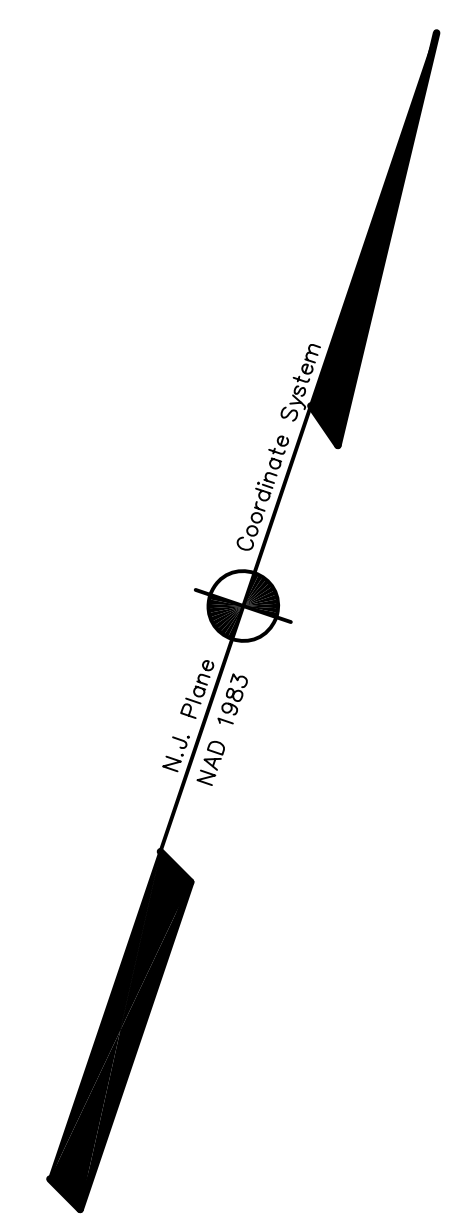


ADJOINS SHEET NO. 46

ADJOINS SHEET NO. 45.01

ADJOINS SHEET NO. 46.01



NEW JERSEY DEPARTMENT OF THE TREASURY  
 DIVISION OF TAXATION  
 PROPERTY ADJUSTMENT  
 APPROVED AS A TAX MAP FOR THE AUTHORITY OF  
 N.J.A.C. 17:27 § 6.6  
 FOR THE DIRECTOR, DIVISION OF TAXATION  
*James J. [Signature]* C.T.A.  
 JAMES J. COLLIER, GENERAL LOCAL ASSESSMENT COMPLIANCE  
*Samuel C. [Signature]* C.T.A.  
 SAMUEL C. DI DOMENICO, SUPERVISING FIELD REPRESENTATIVE  
 DATE: DEC 20 2004 SERIAL NO. 852

THIS MAP HAS BEEN DRAWN USING COMPUTER AIDED DRAFTING/DESIGN (CAD/D) AND COORDINATE GEOMETRY (COGO)

**TAX MAP**  
**EAST BRUNSWICK TOWNSHIP**  
 MIDDLESEX COUNTY, NEW JERSEY  
 SCALE: 1" = 100' DATE: 5-1-2003  
**JOHN D. BERGLER**  
 LICENSED LAND SURVEYOR NO. 37181  
 195 WASHINGTON ROAD  
 SAYREVILLE, NEW JERSEY

ADJOINS SHEET NO. 50