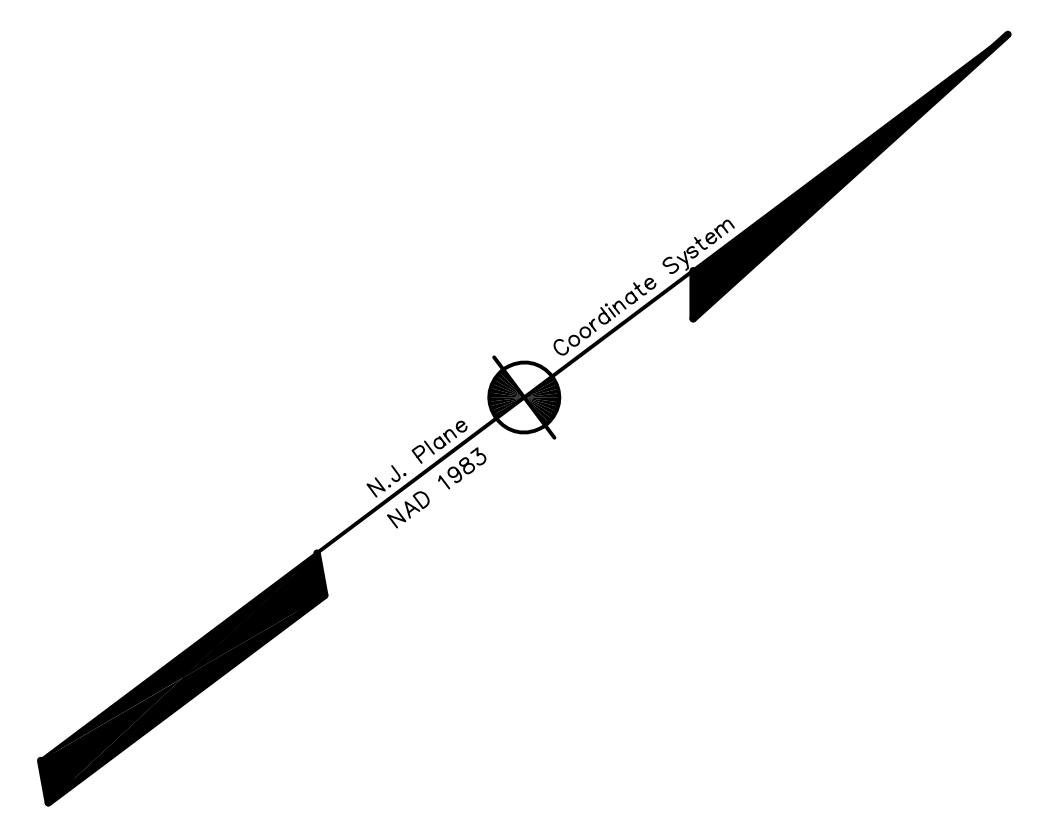
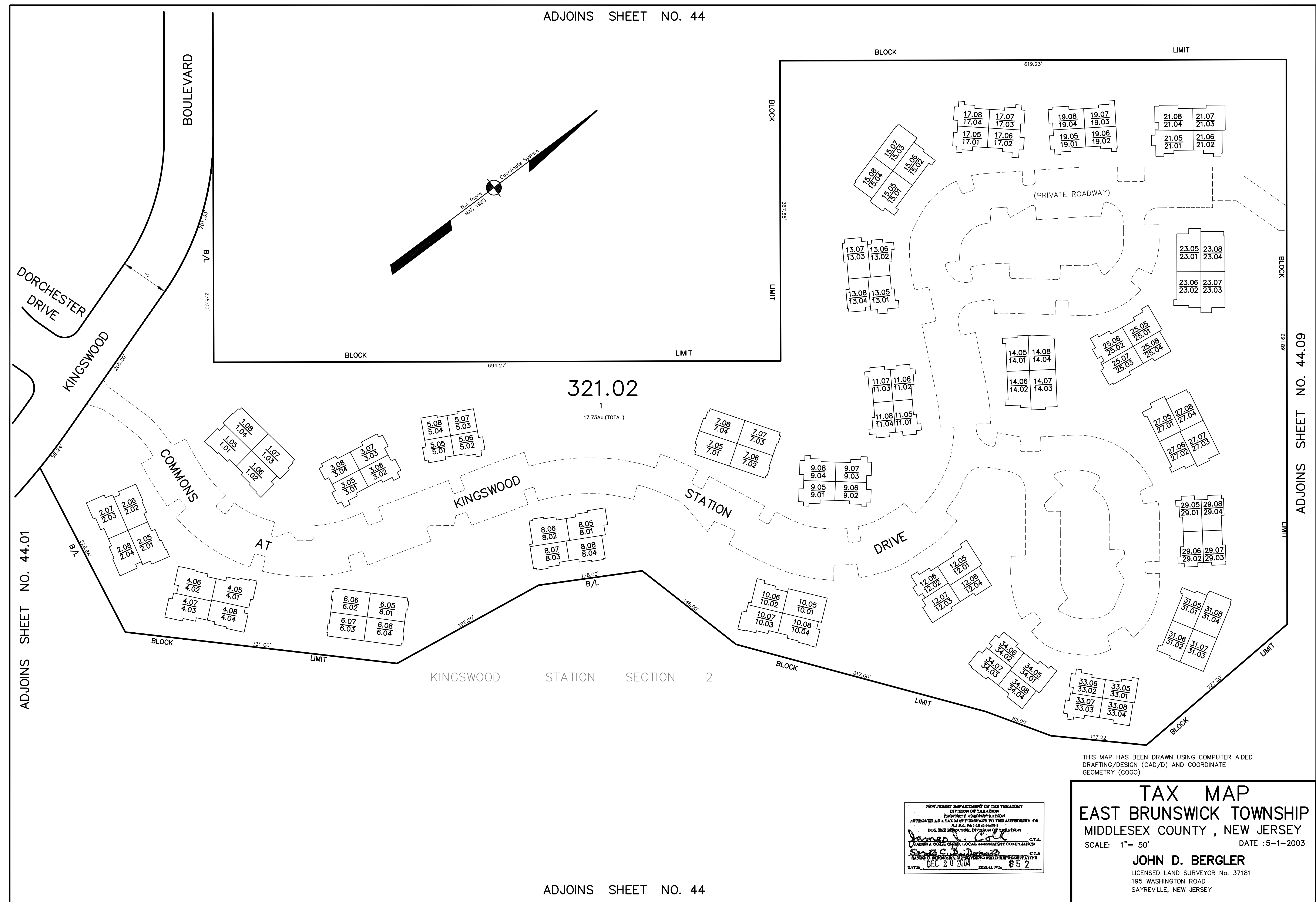


ADJOINS SHEET NO. 44



THIS MAP HAS BEEN DRAWN USING COMPUTER AIDED DRAFTING/DESIGN (CAD/D) AND COORDINATE GEOMETRY (COGO)

NEW JERSEY DEPARTMENT OF THE TREASURY
 DIVISION OF TAXATION
 PROPERTY IDENTIFICATION
 APPROVED AS A TAX MAP PURSUANT TO THE AUTHORITY OF
 N.J.A.C. 17:27A.6(b)
 FOR THE DIRECTOR, DIVISION OF TAXATION
[Signature] C.T.A.
 NANCY J. COLE, CHIEF, LOCAL ASSESSMENT COMPLIANCE
[Signature] C.T.A.
 SANTO C. BORDONE, REPRESENTATIVE
 DATE: DEC 29 2004 SERIAL NO. 852

TAX MAP
EAST BRUNSWICK TOWNSHIP
MIDDLESEX COUNTY, NEW JERSEY
 SCALE: 1" = 50' DATE: 5-1-2003
JOHN D. BERGLER
 LICENSED LAND SURVEYOR No. 37181
 195 WASHINGTON ROAD
 SAYREVILLE, NEW JERSEY

ADJOINS SHEET NO. 44