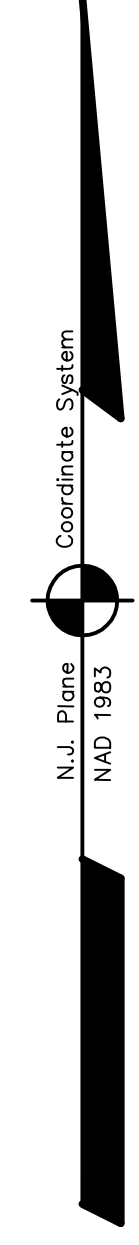
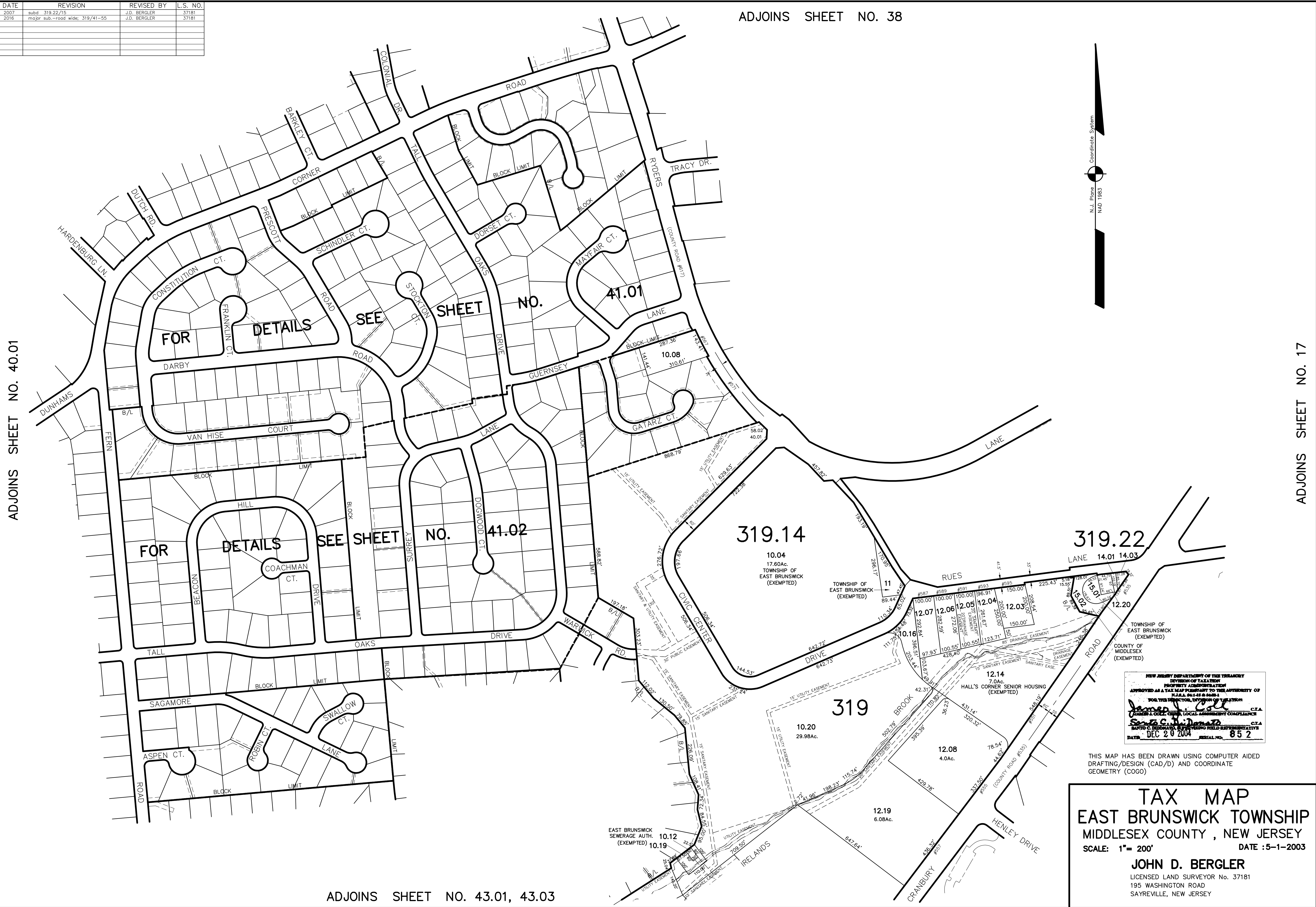


DATE	REVISION	REVISED BY	L.S. NO.
2007	subd. 319.22/15	J.D. BERGLER	37181
2016	major sub.-road wide; 319/41-55	J.D. BERGLER	37181

ADJOINS SHEET NO. 38

ADJOINS SHEET NO. 40.01

ADJOINS SHEET NO. 17



NEW JERSEY DEPARTMENT OF THE TREASURY
 DIVISION OF TAXATION
 PROPERTY ADMINISTRATION
 APPROVED AS A TAX MAP PURSUANT TO THE AUTHORITY OF
 P.L. 2004-108 § 12
 FOR THE MUNICIPALITY OF EAST BRUNSWICK
 TOWNSHIP OF EAST BRUNSWICK, NEW JERSEY
 COUNTY OF MIDDLESEX, NEW JERSEY
 DATE: DEC 20 2004 SERIAL NO. 852

THIS MAP HAS BEEN DRAWN USING COMPUTER AIDED
 DRAFTING/DESIGN (CAD/D) AND COORDINATE
 GEOMETRY (COGO)

TAX MAP
EAST BRUNSWICK TOWNSHIP
MIDDLESEX COUNTY, NEW JERSEY
 SCALE: 1"= 200'
 DATE :5-1-2003
JOHN D. BERGLER
 LICENSED LAND SURVEYOR No. 37181
 195 WASHINGTON ROAD
 SAYREVILLE, NEW JERSEY

ADJOINS SHEET NO. 43.01, 43.03