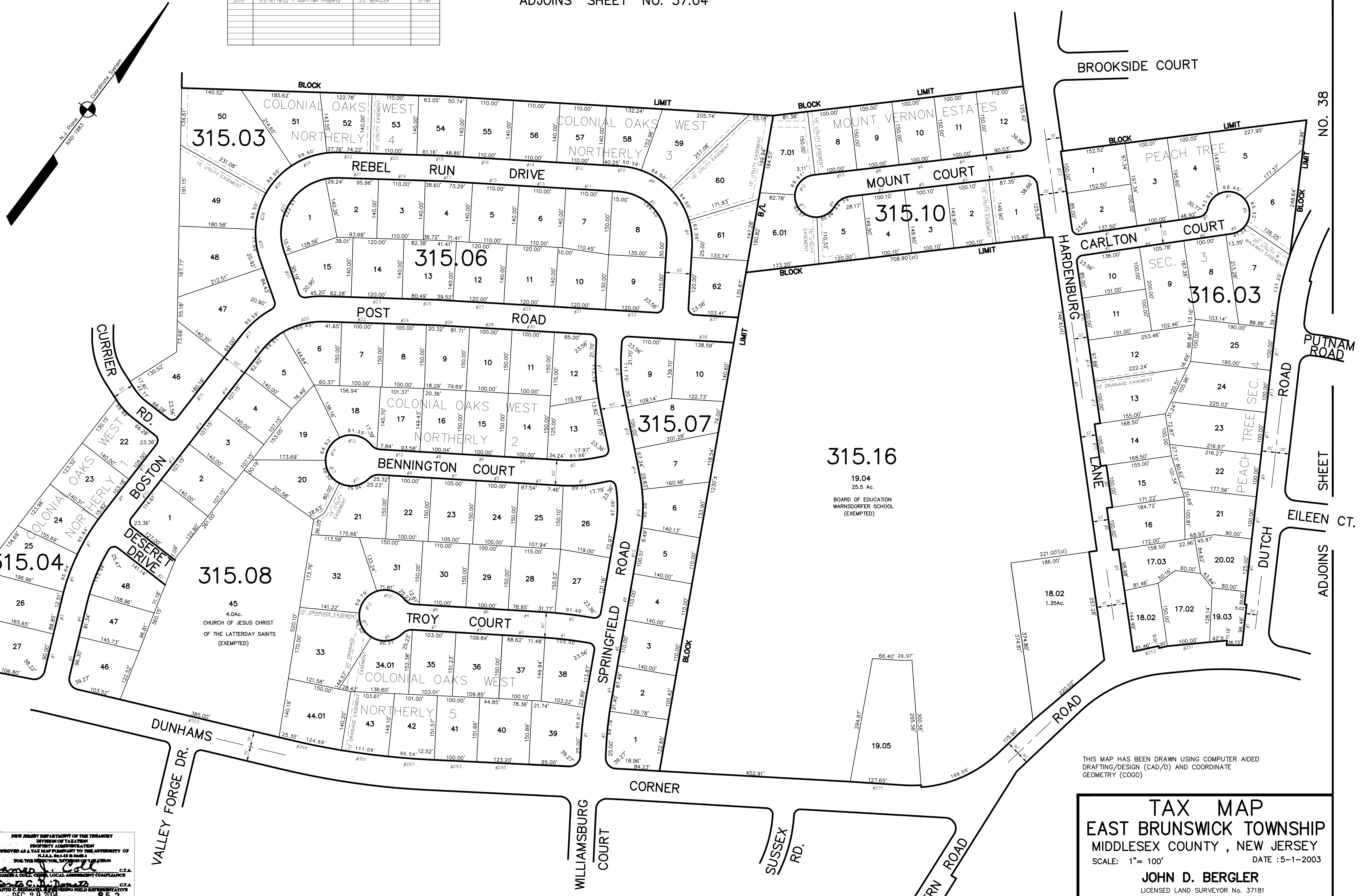


DATE	REVISION	REVISED BY	L.S. NO.
2015	315.16/19.02 - Non-TWP Property	J.D. BERGLER	37181

ADJOINS SHEET NO. 37.04



ADJOINS SHEET NO. 37.03

ADJOINS SHEET NO. 38

ADJOINS SHEET NO. 38

ADJOINS SHEET NO. 38

ADJOINS SHEET NO. 38

NEW JERSEY DEPARTMENT OF THE TREASURY
 DIVISION OF TAXATION
 PROPERTY ADMINISTRATION
 APPROVED AS A TAX MAP PURSUANT TO THE AUTHORITY OF
 N.J.A.C. 17:27 & 17:28
 FOR THE MUNICIPAL DIVISION OF TAXATION
 James J. [Signature]
 COUNTY CLERK LOCAL ASSESSMENT COMPLIANCE
 DATE: DEC 20 2004 SERIAL NO. 852

THIS MAP HAS BEEN DRAWN USING COMPUTER AIDED DRAFTING/DESIGN (CAD/D) AND COORDINATE GEOMETRY (COGO)

TAX MAP
EAST BRUNSWICK TOWNSHIP
 MIDDLESEX COUNTY, NEW JERSEY
 SCALE: 1" = 100' DATE: 5-1-2003
JOHN D. BERGLER
 LICENSED LAND SURVEYOR No. 37181
 195 WASHINGTON ROAD
 SAYREVILLE, NEW JERSEY

ADJOINS SHEET NO. 40