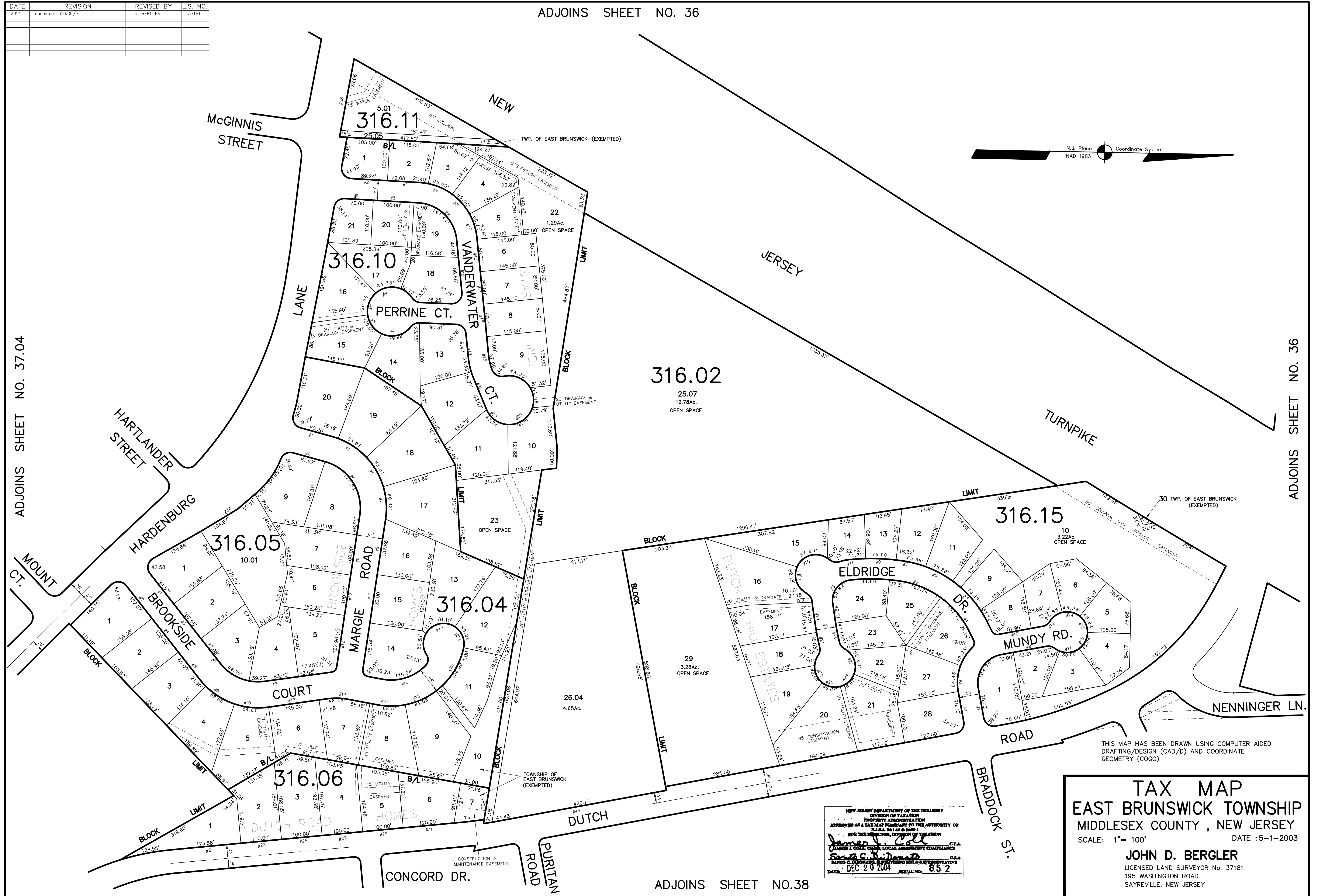


DATE	REVISION	REVISED BY	L.S. NO.
2014	easement 316.05/7	J.D. BERGLER	37181

ADJOINS SHEET NO. 36



ADJOINS SHEET NO. 37.04

ADJOINS SHEET NO. 36

316.02  
25.07  
12.78Ac.  
OPEN SPACE

316.05  
10.01

316.04  
11.10

316.15  
10  
3.22Ac.  
OPEN SPACE

316.06  
2  
1.55Ac.

NEW JERSEY DEPARTMENT OF THE TREASURY  
DIVISION OF TAXATION  
PROPERTY ADMINISTRATION  
APPROVED AS A TAX MAP PURSUANT TO THE AUTHORITY OF  
N.J.A.C. 17:27 & 17:28  
FOR THE DIRECTOR, DIVISION OF TAXATION  
*James J. Cole* C.T.A.  
*John D. Bergler* C.T.A.  
DATE: DEC 20 2014 SERIAL NO. 852

**TAX MAP**  
**EAST BRUNSWICK TOWNSHIP**  
**MIDDLESEX COUNTY, NEW JERSEY**  
SCALE: 1" = 100' DATE: 5-1-2003  
**JOHN D. BERGLER**  
LICENSED LAND SURVEYOR No. 37181  
195 WASHINGTON ROAD  
SAYREVILLE, NEW JERSEY

ADJOINS SHEET NO.38