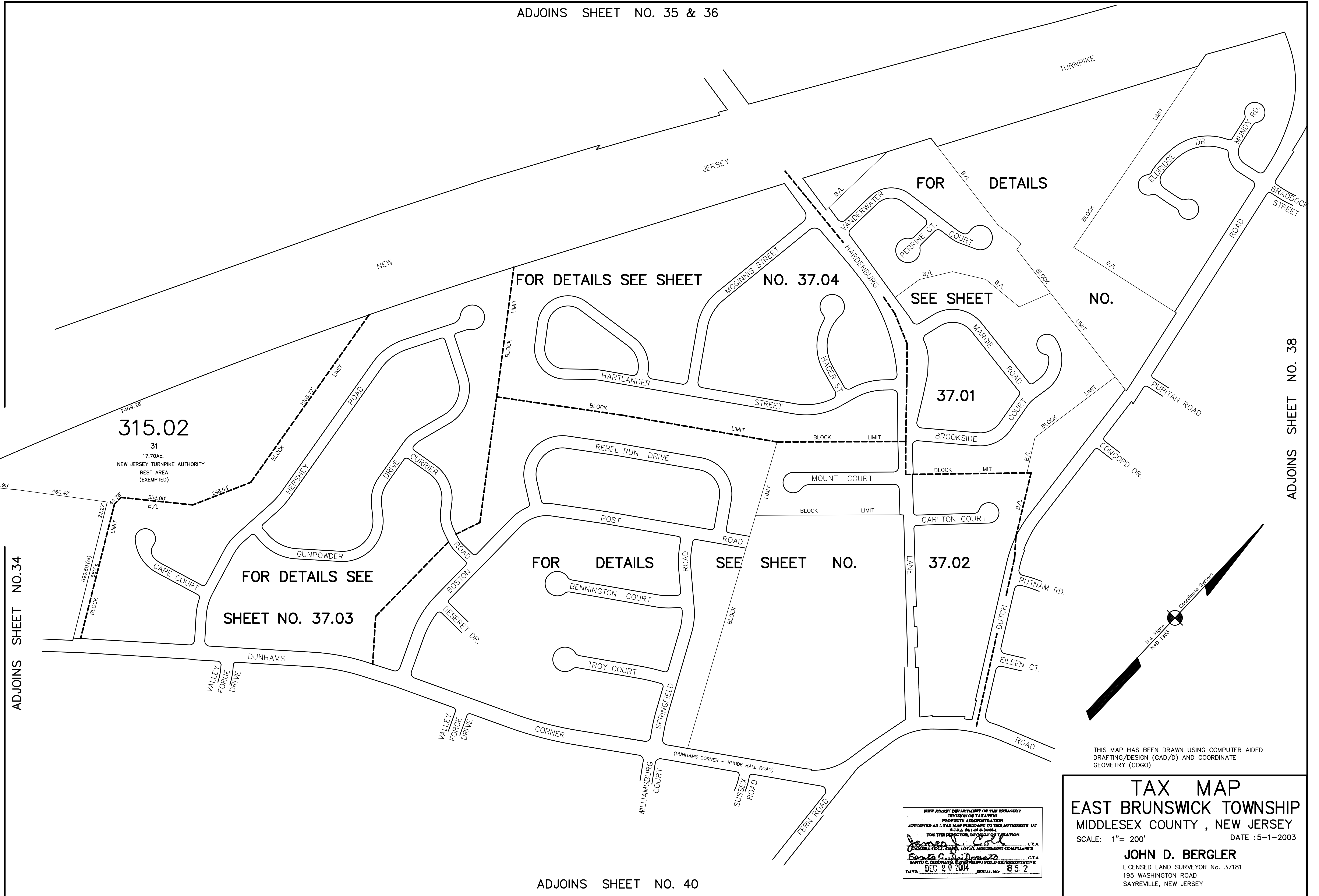


ADJOINS SHEET NO. 35 & 36



315.02

31  
17.70Ac  
NEW JERSEY TURNPIKE AUTHORITY  
REST AREA  
(EXEMPTED)

FOR DETAILS SEE  
SHEET NO. 37.03

FOR DETAILS SEE SHEET  
NO. 37.04

FOR  
DETAILS

SEE SHEET  
NO.

37.01

FOR DETAILS  
SEE SHEET NO.

37.02

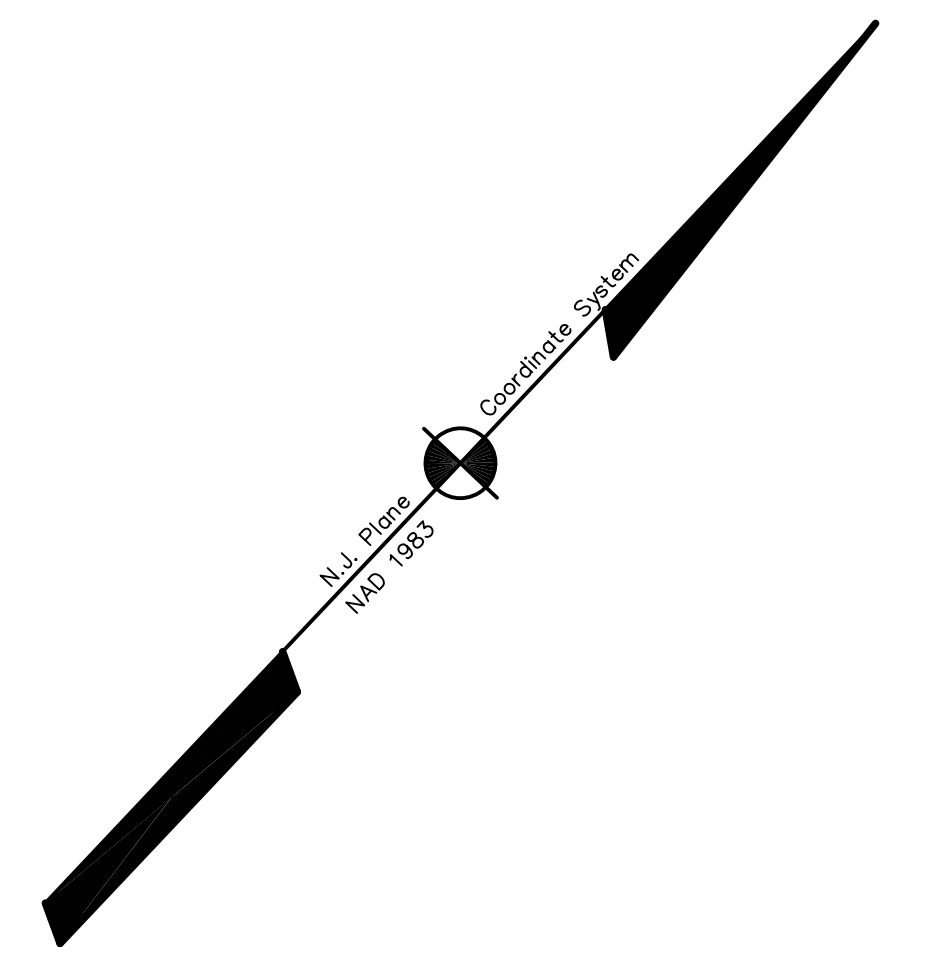
**TAX MAP**  
**EAST BRUNSWICK TOWNSHIP**  
**MIDDLESEX COUNTY, NEW JERSEY**

SCALE: 1" = 200' DATE : 5-1-2003

**JOHN D. BERGLER**  
 LICENSED LAND SURVEYOR No. 37181  
 195 WASHINGTON ROAD  
 SAYREVILLE, NEW JERSEY

NEW JERSEY DEPARTMENT OF THE TREASURY  
 DIVISION OF TAXATION  
 PROPERTY IDENTIFICATION  
 APPROVED AS A TAX MAP PURSUANT TO THE AUTHORITY OF  
 P.L. 2002-146, § 10-1  
 FOR THE DIRECTOR, DIVISION OF TAXATION  
*James J. ...* C.T.A.  
*Santa C. ...* C.T.A.  
 DATE: DEC 20 2004 SERIAL NO. 852

THIS MAP HAS BEEN DRAWN USING COMPUTER AIDED  
 DRAFTING/DESIGN (CAD/D) AND COORDINATE  
 GEOMETRY (COGO)



ADJOINS SHEET NO. 34

ADJOINS SHEET NO. 38

ADJOINS SHEET NO. 40