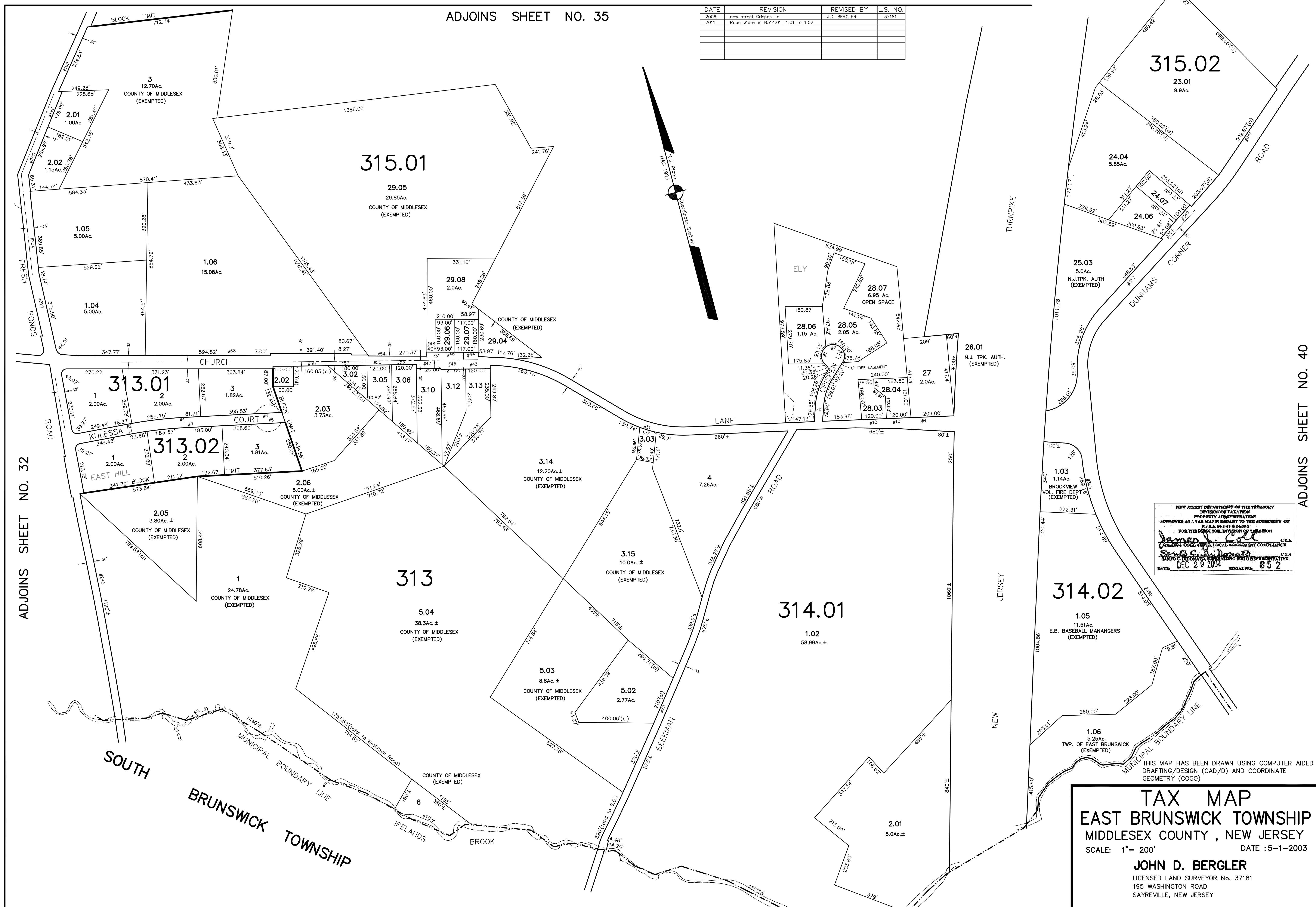


ADJOINS SHEET NO. 35

DATE	REVISION	REVISED BY	L.S. NO.
2008	new street Crispen Ln	J.D. BERGLER	37181
2011	Road Widening B314.01 L1.01 to 1.02		



ADJOINS SHEET NO. 32

ADJOINS SHEET NO. 40

NEW JERSEY DEPARTMENT OF THE TREASURY
 DIVISION OF TAXATION
 PROPERTY APPRAISAL
 APPROVED AS A TAX MAP PREPARED TO THE AUTHORITY OF
 N.J.S.A. 52:27-10
 FOR THE DIRECTOR, DIVISION OF TAXATION
James J. Cole C.T.A.
 JAMES J. COLE, CHIEF, LOCAL ASSESSMENT COMPLIANCE
Scott C. DiDomenico C.T.A.
 SCOTT C. DIDOMENICO, SUPERVISING FIELD REPRESENTATIVE
 DATE: DEC 20 2004 SERIAL NO: 852

THIS MAP HAS BEEN DRAWN USING COMPUTER AIDED
 DRAFTING/DESIGN (CAD/D) AND COORDINATE
 GEOMETRY (COGO)

TAX MAP
EAST BRUNSWICK TOWNSHIP
MIDDLESEX COUNTY, NEW JERSEY
 SCALE: 1" = 200' DATE: 5-1-2003
JOHN D. BERGLER
 LICENSED LAND SURVEYOR No. 37181
 195 WASHINGTON ROAD
 SAYREVILLE, NEW JERSEY