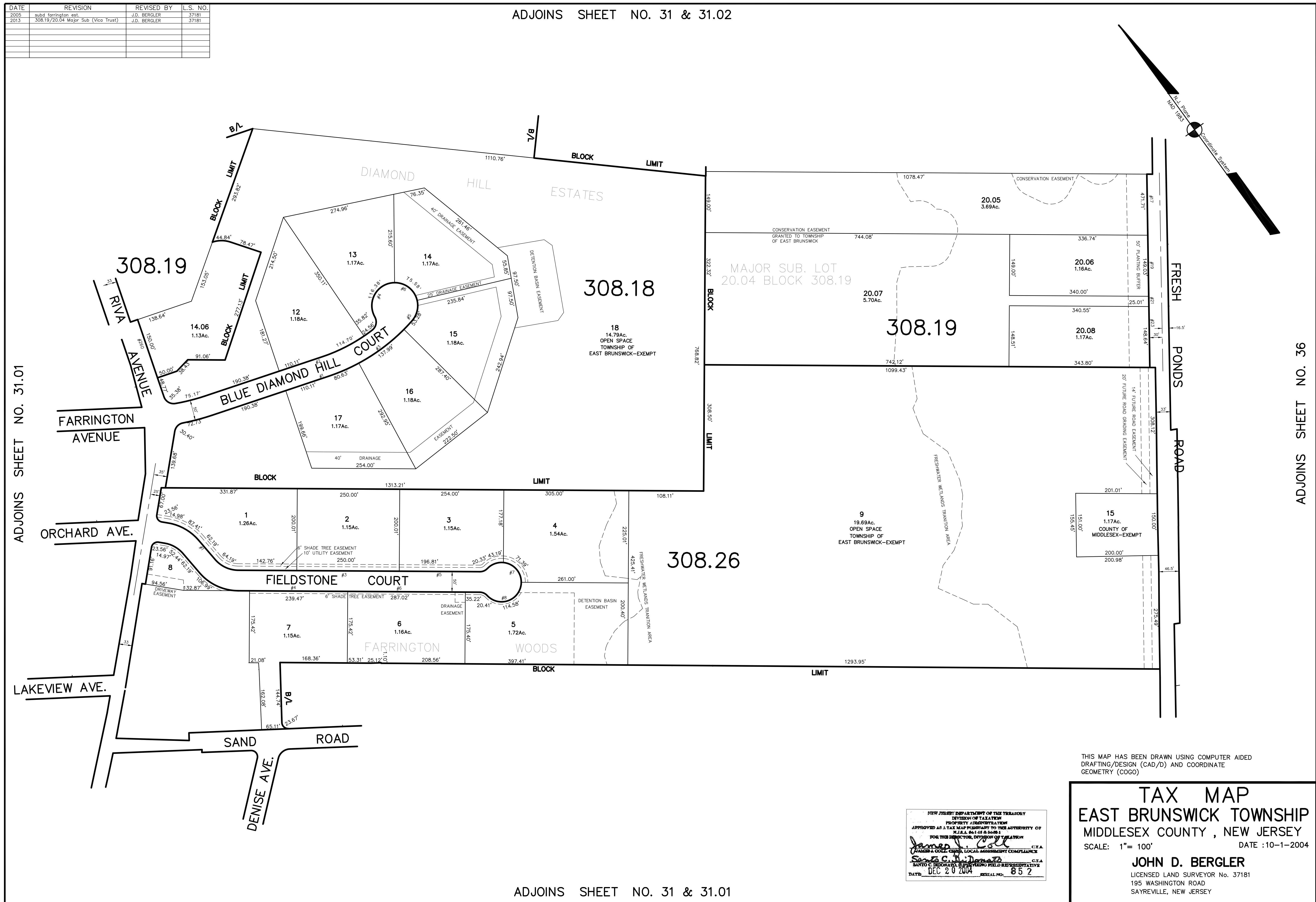


ADJOINS SHEET NO. 31 & 31.02

DATE	REVISION	REVISED BY	L.S. NO.
2005	subd Farrington est.	J.D. BERGLER	37181
2013	308.19/20.04 Major Sub (Vico Trust)	J.D. BERGLER	37181



ADJOINS SHEET NO. 31.01

ADJOINS SHEET NO. 36

ADJOINS SHEET NO. 31 & 31.01

THIS MAP HAS BEEN DRAWN USING COMPUTER AIDED DRAFTING/DESIGN (CAD/D) AND COORDINATE GEOMETRY (COGO)

NEW JERSEY DEPARTMENT OF THE TREASURY
 DIVISION OF TAXATION
 PROPERTY ADMINISTRATION
 APPROVED AS A TAX MAP PURSUANT TO THE AUTHORITY OF
 N.J.A.C. 17:27 & 17:28
 FOR THE DIRECTOR, DIVISION OF TAXATION
John D. Bergler
 JOHN D. BERGLER, C.L.A.
 SANTO C. BIGNARDI, COUNTY FIELD REPRESENTATIVE
 DATE: DEC 20 2004 SERIAL NO. 852

TAX MAP
EAST BRUNSWICK TOWNSHIP
 MIDDLESEX COUNTY, NEW JERSEY
 SCALE: 1" = 100' DATE: 10-1-2004
JOHN D. BERGLER
 LICENSED LAND SURVEYOR No. 37181
 195 WASHINGTON ROAD
 SAYREVILLE, NEW JERSEY