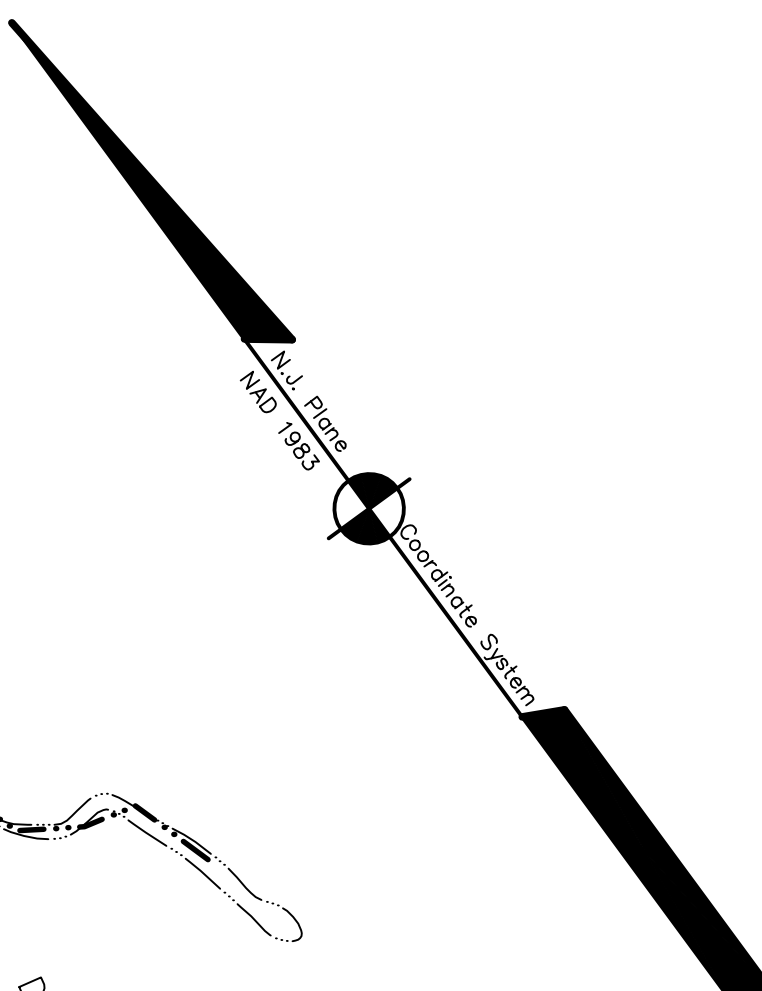
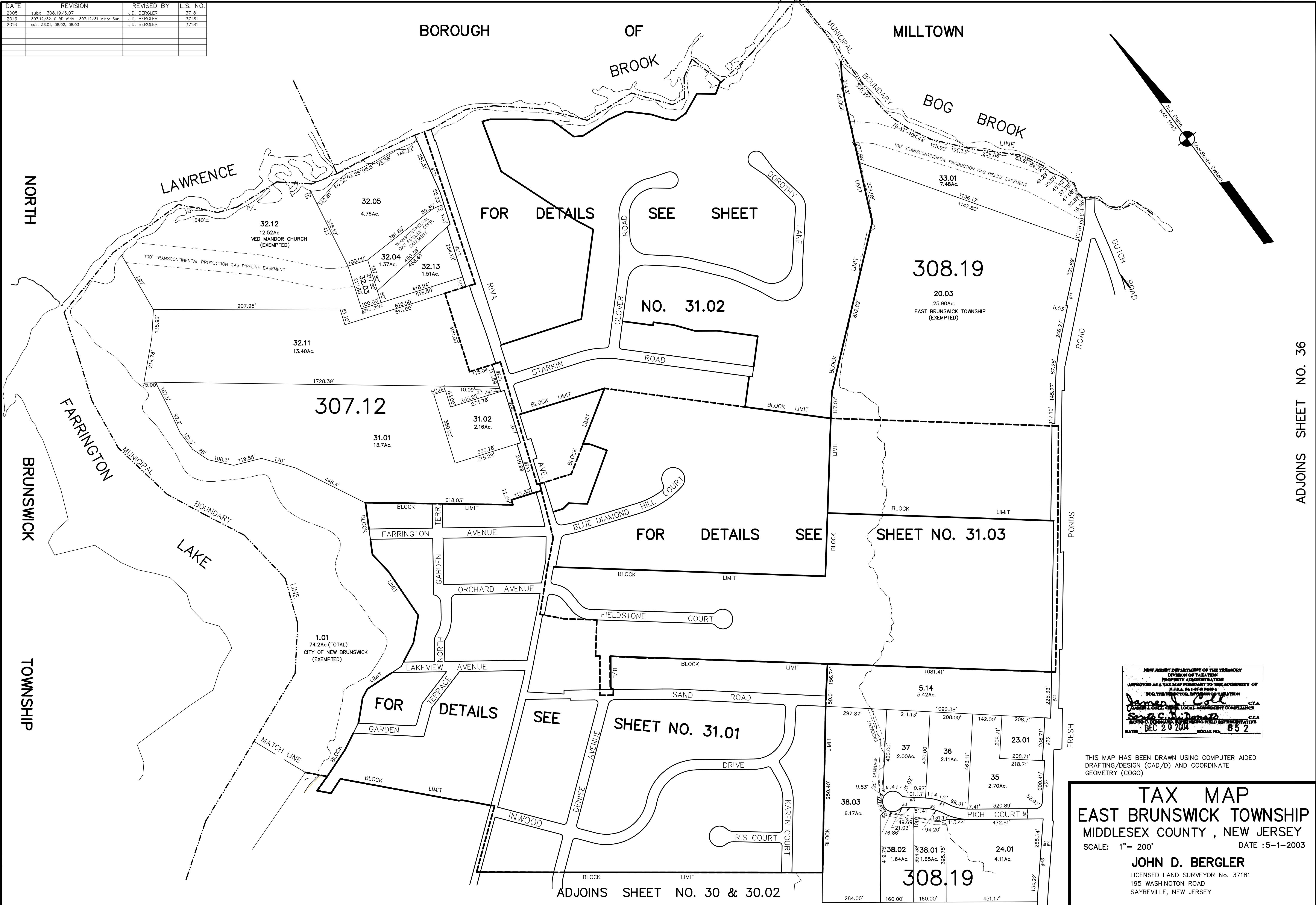


DATE	REVISION	REVISED BY	L.S. NO.
2005	subd. 308.19/31.07	J.D. BERGLER	37181
2013	307.12/32.10 RD Wide - 307.12/31 Minor Sun	J.D. BERGLER	37181
2016	sub. 38.01, 38.02, 38.03	J.D. BERGLER	37181



NEW JERSEY DEPARTMENT OF THE TREASURY
 DIVISION OF TAXATION
 PROPERTY ADMINISTRATION
 APPROVED AS A TAX MAP PURSUANT TO THE AUTHORITY OF
 N.J.A.C. 17:27 & 17:28
 FOR THE DIRECTOR, DIVISION OF TAXATION
 JAMES J. COLE, C.T.A. LOCAL ASSESSMENT COMPLIANCE
 JOHN D. BERGLER, C.T.A. FIELD SUPERVISOR
 DATE: DEC 20 2004 SERIAL NO. 852

THIS MAP HAS BEEN DRAWN USING COMPUTER AIDED DRAFTING/DESIGN (CAD/D) AND COORDINATE GEOMETRY (COGO)

TAX MAP
EAST BRUNSWICK TOWNSHIP
 MIDDLESEX COUNTY, NEW JERSEY
 SCALE: 1" = 200' DATE: 5-1-2003
JOHN D. BERGLER
 LICENSED LAND SURVEYOR No. 37181
 195 WASHINGTON ROAD
 SAYREVILLE, NEW JERSEY

ADJOINS SHEET NO. 36

ADJOINS SHEET NO. 30 & 30.02