

DATE	REVISION	REVISED BY	L.S. NO.
2005	309.03/22.08 subd.	J.D. BERGLER	37181

TOWNSHIP OF NORTH BRUNSWICK

FARRINGTON LAKE

309.04

29.01

309.03

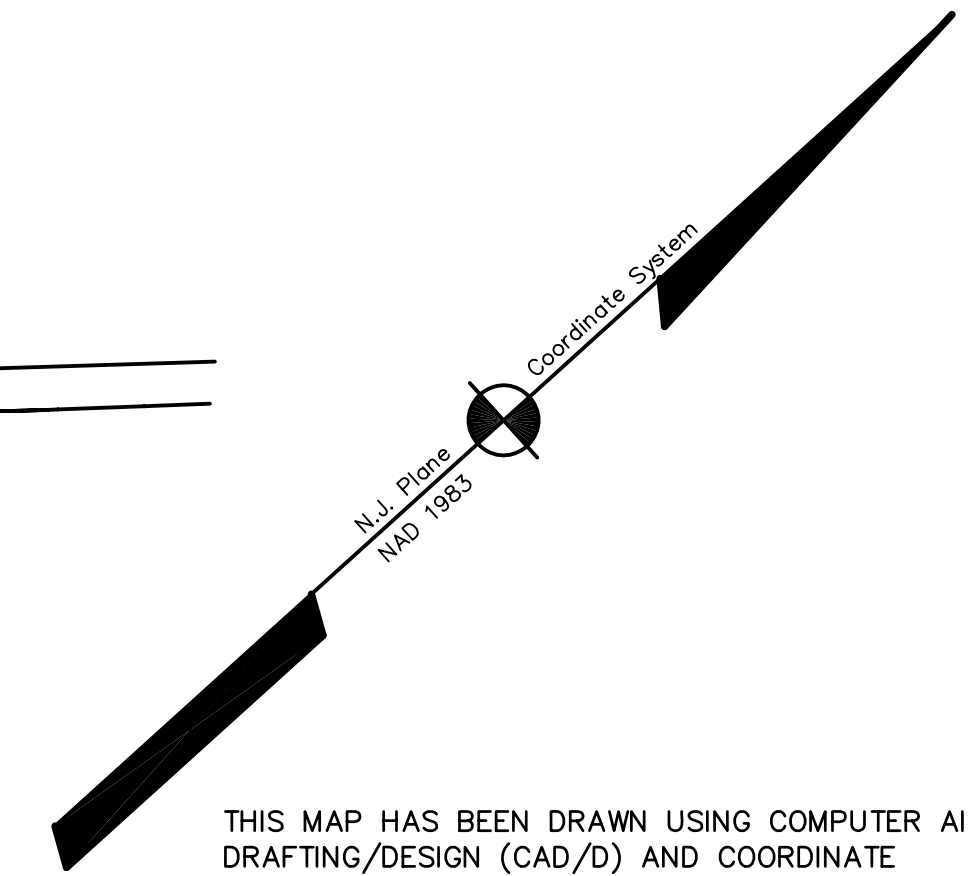
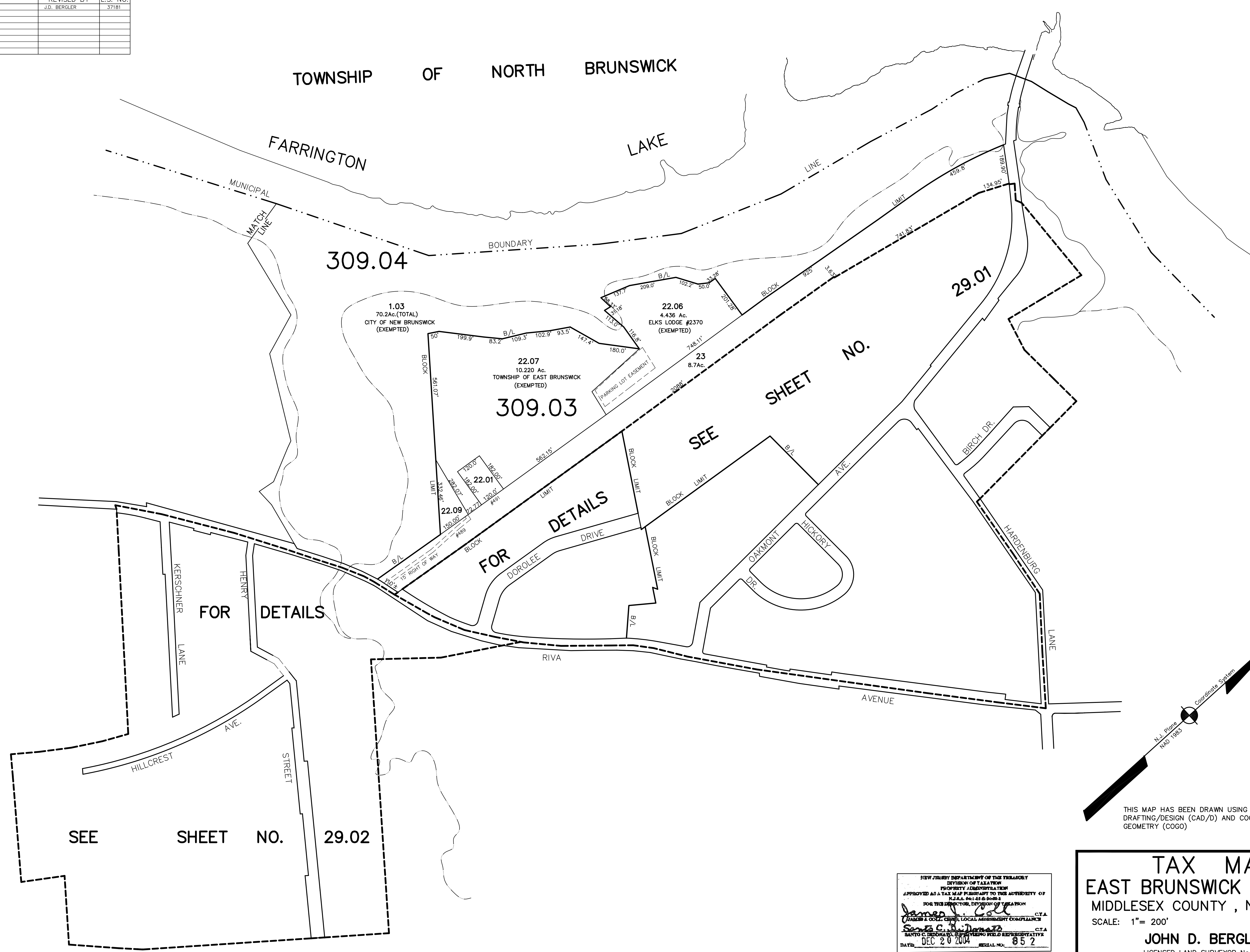
SEE SHEET NO.

SEE SHEET NO. 29.02

ADJOINS SHEET NO. 33

ADJOINS SHEET NO. 28 & 28.01

ADJOINS SHEET NO. 30



THIS MAP HAS BEEN DRAWN USING COMPUTER AIDED DRAFTING/DESIGN (CAD/D) AND COORDINATE GEOMETRY (COGO)

NEW JERSEY DEPARTMENT OF THE TREASURY
 DIVISION OF TAXATION
 PROPERTY ADMINISTRATION
 APPROVED AS A TAX MAP PURSUANT TO THE AUTHORITY OF
 N.J.A.C. 17:27 & 17:28
 FOR THE DIRECTOR, DIVISION OF TAXATION
James J. Cole C.T.A.
 JAMES J. COLE, CHIEF, LOCAL ASSESSMENT COMPLIANCE
Scott C. ... C.T.A.
 SCOTT C. ... FIELD REPRESENTATIVE
 DATE: DEC 20 2004 SERIAL NO. 852

TAX MAP
EAST BRUNSWICK TOWNSHIP
 MIDDLESEX COUNTY, NEW JERSEY
 SCALE: 1" = 200' DATE: 5-1-2003
JOHN D. BERGLER
 LICENSED LAND SURVEYOR No. 37181
 195 WASHINGTON ROAD
 SAYREVILLE, NEW JERSEY