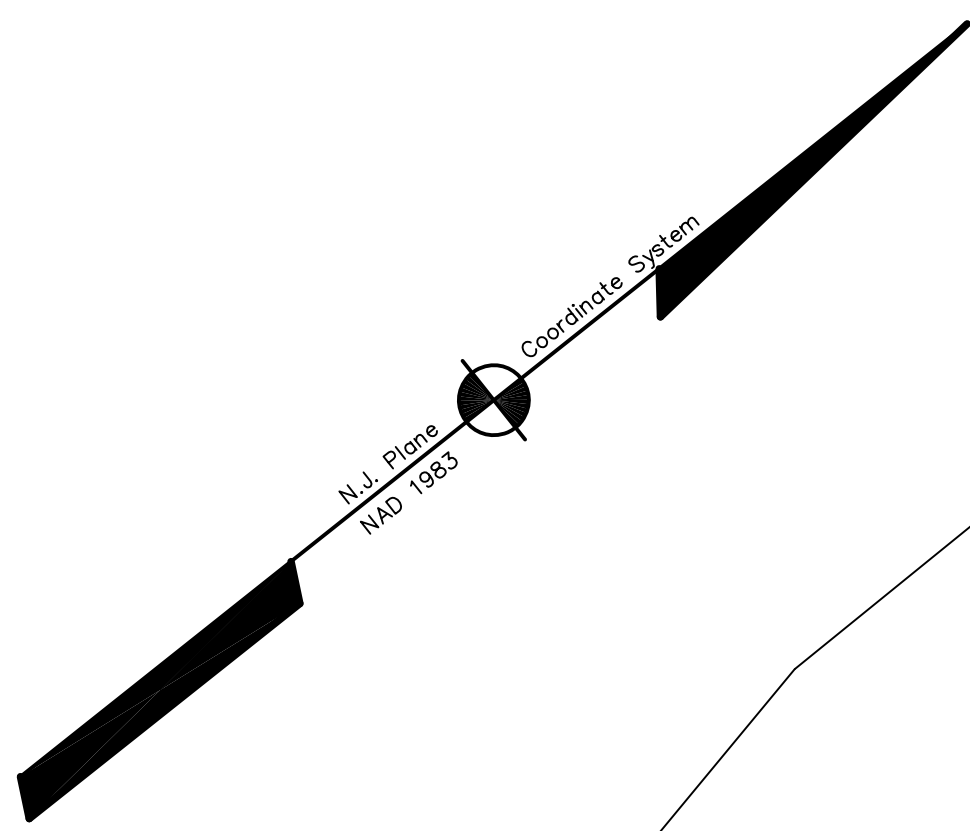


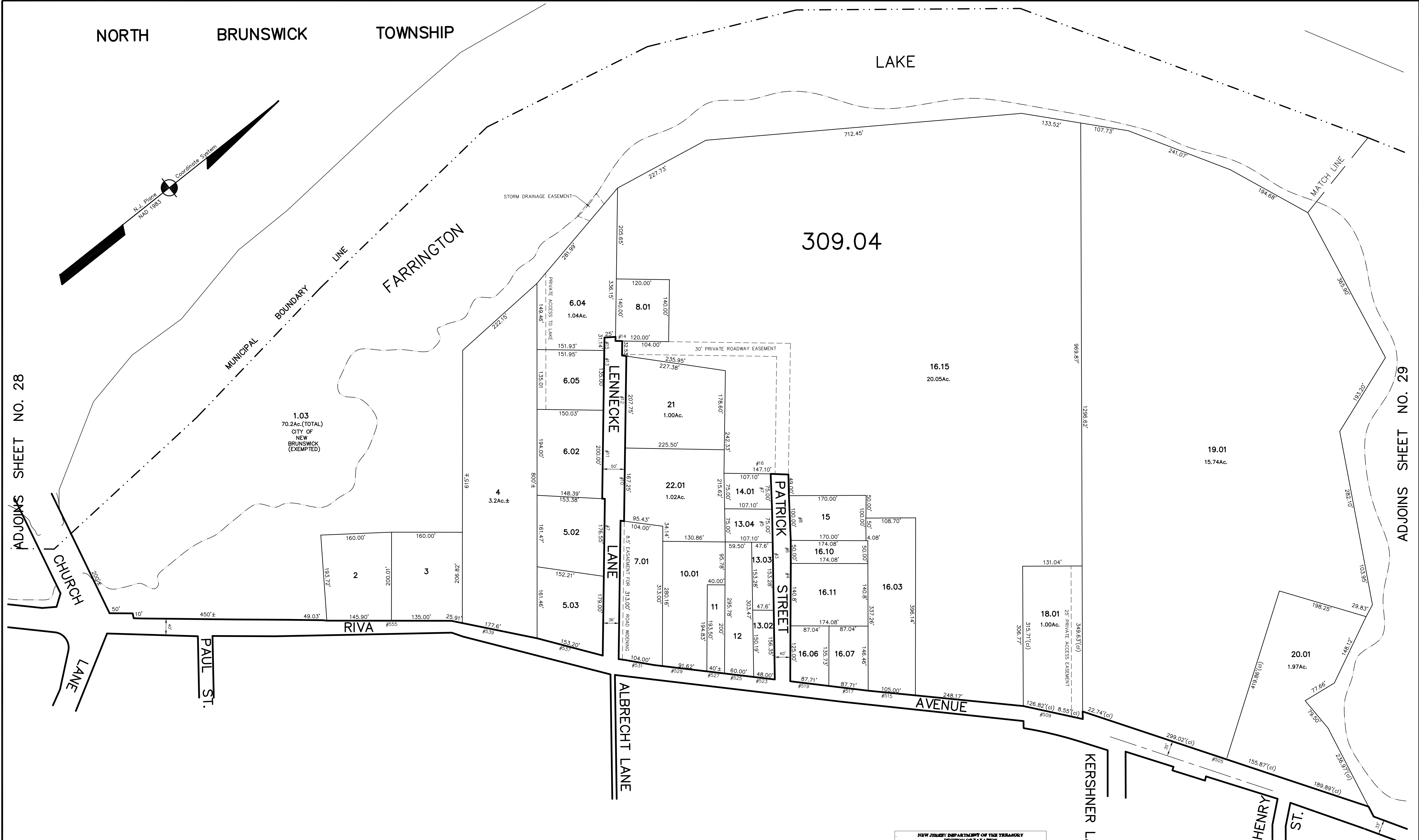
NORTH BRUNSWICK TOWNSHIP

LAKE



ADJOINS SHEET NO. 28

ADJOINS SHEET NO. 29



DATE	REVISION	REVISED BY	L.S. NO.
2012	lot line elimination	J.D. BERGLER	37181
	309.04/16.12,16.13,17,18.02		

ADJOINS SHEET NO. 28

NEW JERSEY DEPARTMENT OF THE TREASURY
 DIVISION OF TAXATION
 PROPERTY ADJUSTMENT
 APPROVED AS A TAX MAP PURSUANT TO THE AUTHORITY OF
 N.J.A.C. 17:27 & 17:28
 FOR THE DIRECTOR, DIVISION OF TAXATION
James J. Cole C.T.A.
 HANDED I. COLL. CHIEF, LOCAL ASSESSMENT COMPLIANCE
Sonia C. Demas C.T.A.
 HANDED C. DEMAS, SUPERVISING FIELD REPRESENTATIVE
 DATE: DEC 20 2004 REG. NO. 852

THIS MAP HAS BEEN DRAWN USING COMPUTER AIDED DRAFTING/DESIGN (CAD/D) AND COORDINATE GEOMETRY (COGO)

TAX MAP
EAST BRUNSWICK TOWNSHIP
 MIDDLESEX COUNTY, NEW JERSEY
 SCALE: 1" = 100' DATE: 5-1-2003
JOHN D. BERGLER
 LICENSED LAND SURVEYOR No. 37181
 195 WASHINGTON ROAD
 SAYREVILLE, NEW JERSEY