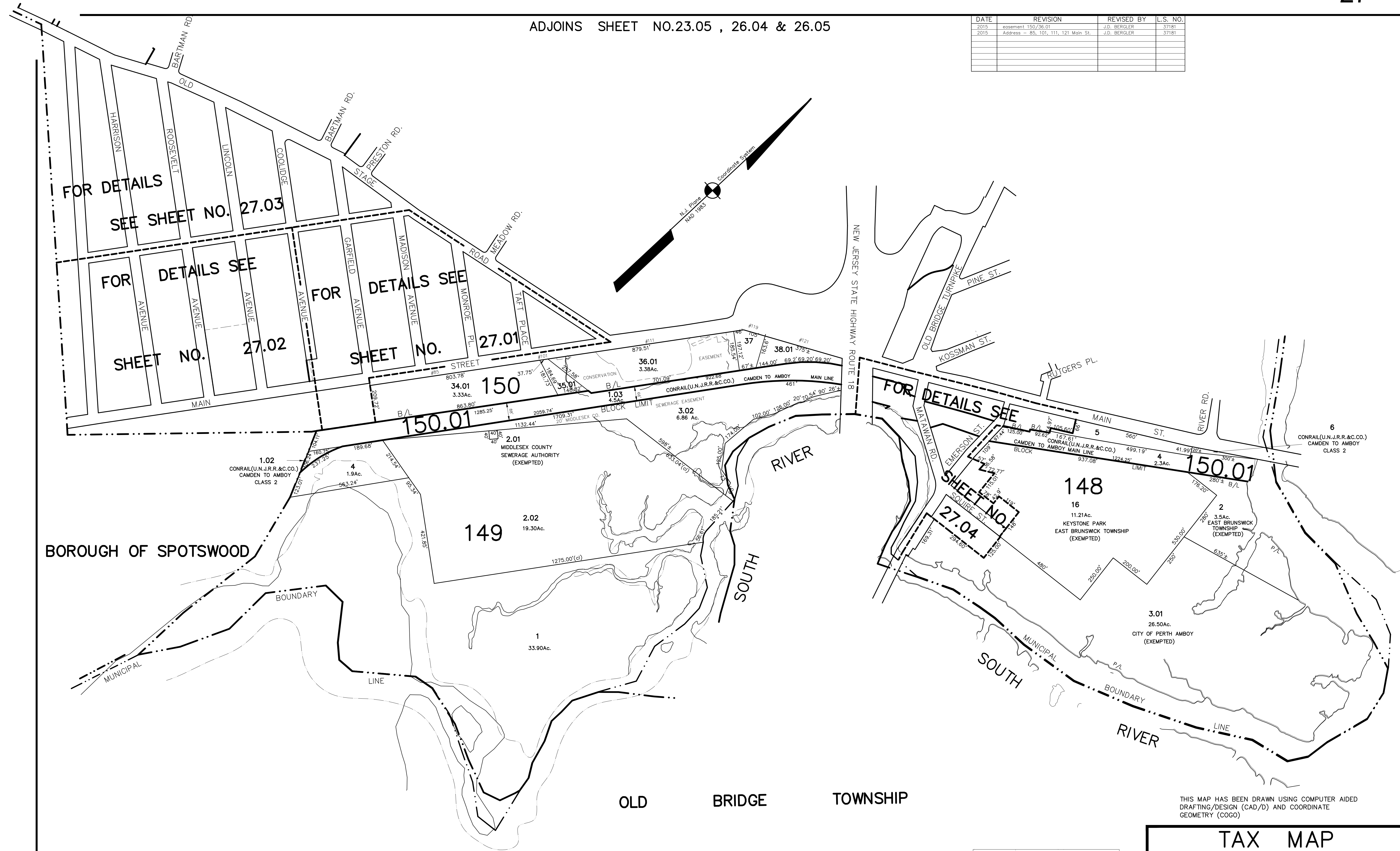


ADJOINS SHEET NO.23.05 , 26.04 & 26.05

DATE	REVISION	REVISED BY	L.S. NO.
2015	Easement 150/36.01	J.D. BERGLER	37181
2015	Address - 85, 101, 111, 121 Main St.	J.D. BERGLER	37181



THIS MAP HAS BEEN DRAWN USING COMPUTER AIDED DRAFTING/DESIGN (CAD/D) AND COORDINATE GEOMETRY (COGO)

NEW JERSEY DEPARTMENT OF THE TREASURY
 DIVISION OF TAXATION
 PROPERTY ADMINISTRATION
 APPROVED AS A TAX MAP PURSUANT TO THE AUTHORITY OF
 N.J.A.C. 17:27 & 17:28
 FOR THE DISTRICT OFFICE OF
 JAMES L. COLE, COUNTY CLERK
 JOHN D. BERGLER, C.L.A.
 SALES REPRESENTATIVE
 DATE: DEC 20 2004 SERIAL NO. 852

TAX MAP
EAST BRUNSWICK TOWNSHIP
MIDDLESEX COUNTY, NEW JERSEY
 SCALE: 1"=200' DATE :5-1-2003
JOHN D. BERGLER
 LICENSED LAND SURVEYOR No. 37181
 195 WASHINGTON ROAD
 SAYREVILLE, NEW JERSEY