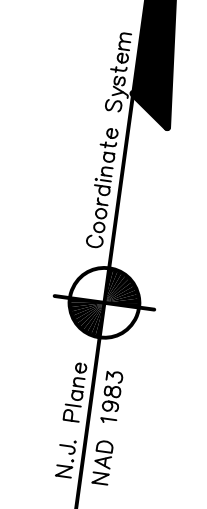


ADJOINS SHEET NO. 26.01

DATE	REVISION	REVISED BY	L.S. NO.
2007	RD WIDENING 212/51.52	J.D. BERGLER	37181

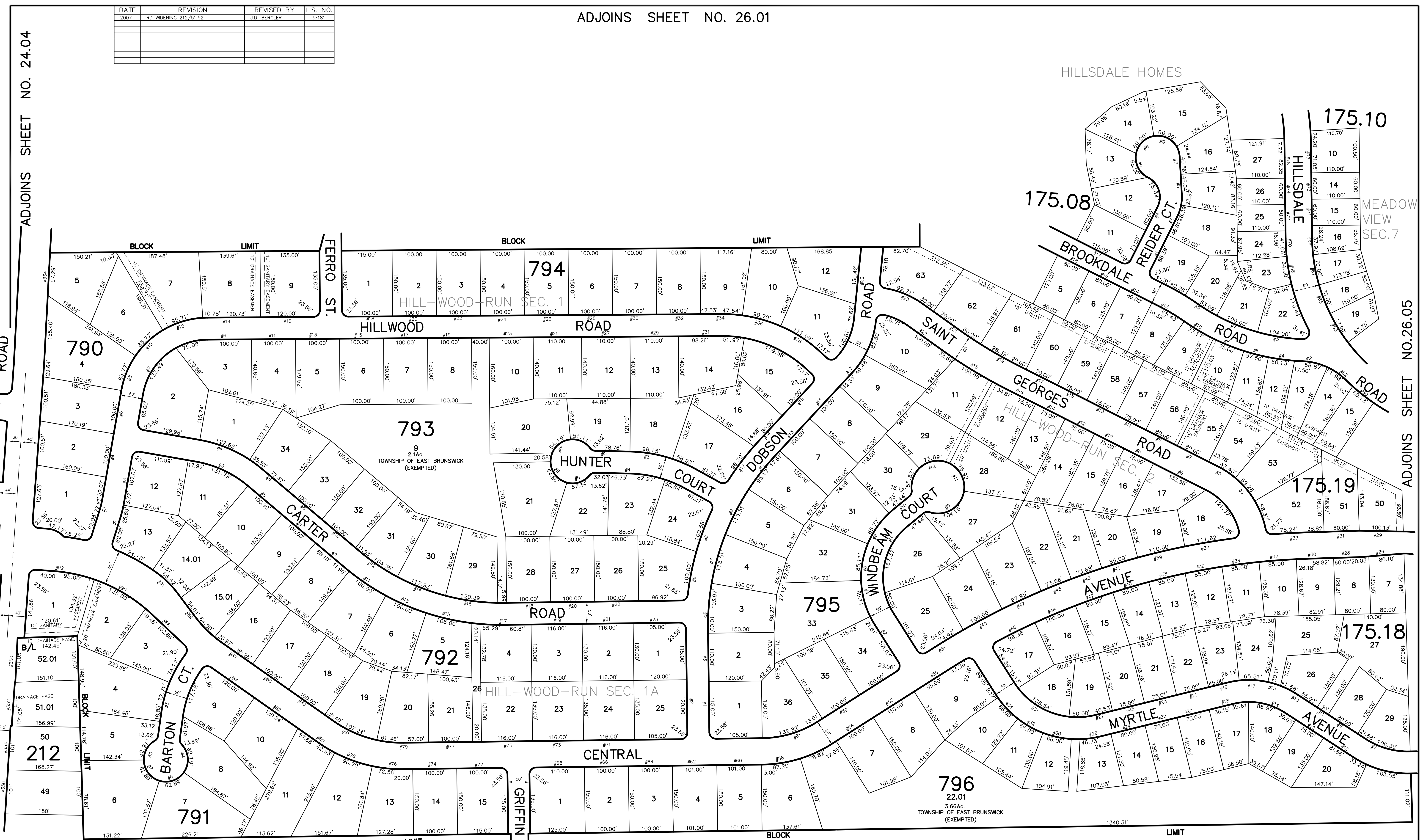


ADJOINS SHEET NO. 24.04

ROAD

FROST AVE

SUMMERHILL



HILLSDALE HOMES

175.10

175.08

MEADOW VIEW SEC.7

ADJOINS SHEET NO.26.05

175.19

175.18

796
22.01
TOWNSHIP OF EAST BRUNSWICK (EXEMPTED)

NEW JERSEY DEPARTMENT OF THE TREASURY
DIVISION OF TAXATION
PROPERTY ADJUSTMENT
APPROVED AS A TAX MAP PRESENTED TO THE AUTHORITY OF
J.L.A. 04-118-00003
FOR THE DIRECTOR, DIVISION OF TAXATION
Jamie L. Cole C.T.A.
Sam C. DiDomenico C.T.A.
DATE: DEC 20 2004 SERIAL NO. 652

TAX MAP
EAST BRUNSWICK TOWNSHIP
MIDDLESEX COUNTY, NEW JERSEY
SCALE: 1"= 100'
DATE :5-1-2003
JOHN D. BERGLER
LICENSED LAND SURVEYOR No. 37181
195 WASHINGTON ROAD
SAYREVILLE, NEW JERSEY

THIS MAP HAS BEEN DRAWN USING COMPUTER AIDED
DRAFTING/DESIGN (CAD/D) AND COORDINATE
GEOMETRY (COG)

ADJOINS SHEET NO. 26.04