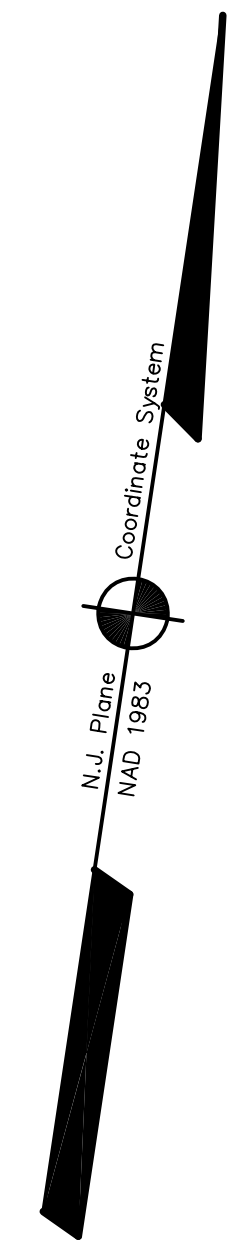


ADJOINS SHEET NO. 24 & 25

ADJOINS SHEET NO. 22&23



THIS MAP HAS BEEN DRAWN USING COMPUTER AIDED DRAFTING/DESIGN (CAD/D) AND COORDINATE GEOMETRY (COGO)

TAX MAP

EAST BRUNSWICK TOWNSHIP
 MIDDLESEX COUNTY, NEW JERSEY

SCALE: 1" = 200' DATE: 5-1-2003

JOHN D. BERGLER
 LICENSED LAND SURVEYOR No. 37181
 195 WASHINGTON ROAD
 SAYREVILLE, NEW JERSEY

NEW JERSEY DEPARTMENT OF THE TREASURY
 DIVISION OF TAXATION
 PROPERTY ADMINISTRATION
 APPROVED AS A TAX MAP PRESENT TO THE AUTHORITY OF
 N.J.A.C. 17:28 § 2.6(2)
 FOR THE DIRECTOR, DIVISION OF TAXATION
[Signature] C.T.A.
 TERRY L. COLE, COUNTY LOCAL ASSESSMENT COMPLIANCE C.T.A.
 SANTI C. BODRAN, COUNTY FIELD REPRESENTATIVE
 DATE: DEC 20 2004 SERIAL NO. 852

BOROUGH OF SPOTSWOOD

ADJOINS SHEET NO. 27