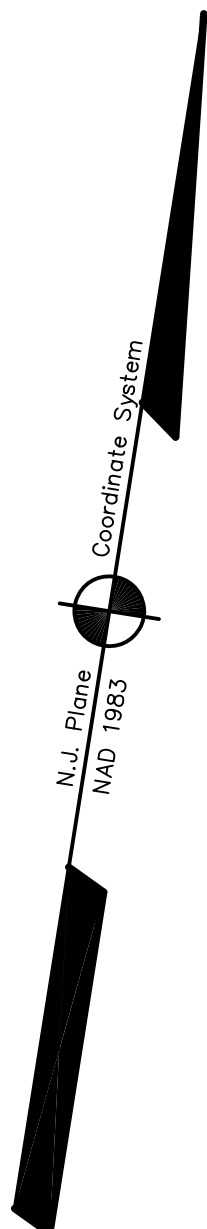
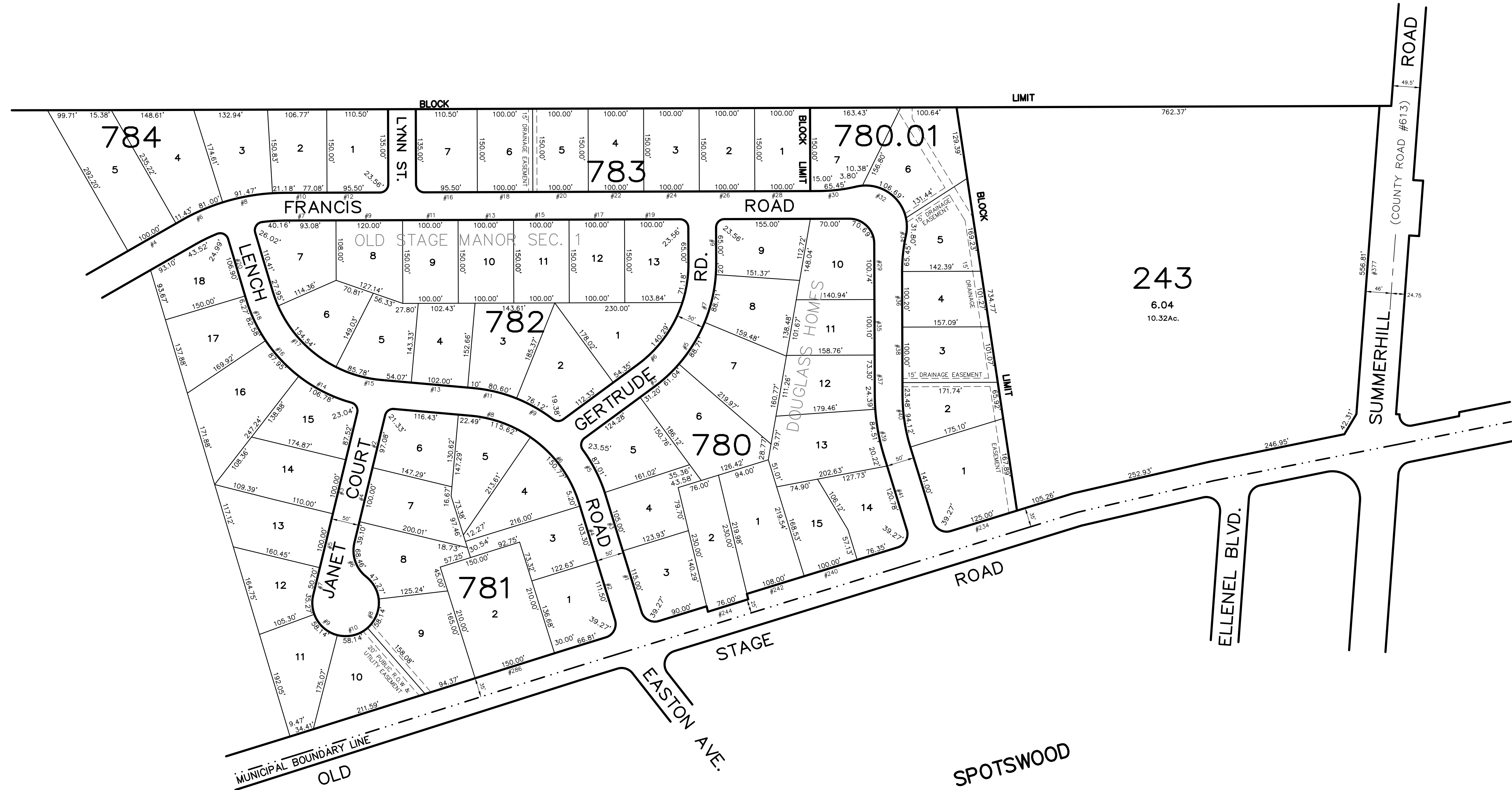


DATE	REVISION	REVISED BY	L.S. NO.
2007	rd widening 243/6.03	J.D. BERGLER	37181

ADJOINS SHEET NO. 25

ADJOINS SHEET NO. 25.02

ADJOINS SHEET NO. 26.04



THIS MAP HAS BEEN DRAWN USING COMPUTER AIDED
 DRAFTING/DESIGN (CAD/D) AND COORDINATE
 GEOMETRY (COGO)

NEW JERSEY DEPARTMENT OF THE TREASURY
 DIVISION OF TAXATION
 PROPERTY ADMINISTRATION
 APPROVED AS A TAX MAP PURSUANT TO THE AUTHORITY OF
 N.J.A.C. 17:27 & 17:28
 FOR THE DIRECTOR, DIVISION OF TAXATION
James J. Coll C.T.A.
 JAMES J. COLL, LOCAL ASSESSMENT COMPLIANCE
John D. Bergler C.T.A.
 JOHN D. BERGLER, PROFESSIONAL FIELD REPRESENTATIVE
 DATE: DEC 20 2004 REG. NO. 852

TAX MAP
EAST BRUNSWICK TOWNSHIP
MIDDLESEX COUNTY, NEW JERSEY
 SCALE: 1" = 100' DATE : 5-1-2003
JOHN D. BERGLER
 LICENSED LAND SURVEYOR No. 37181
 195 WASHINGTON ROAD
 SAYREVILLE, NEW JERSEY