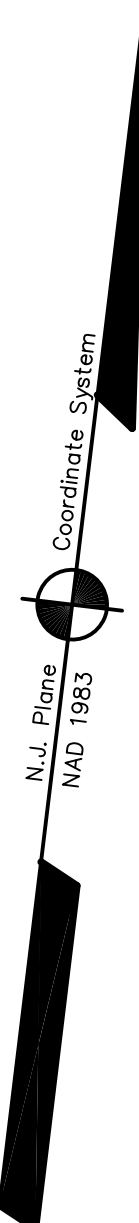
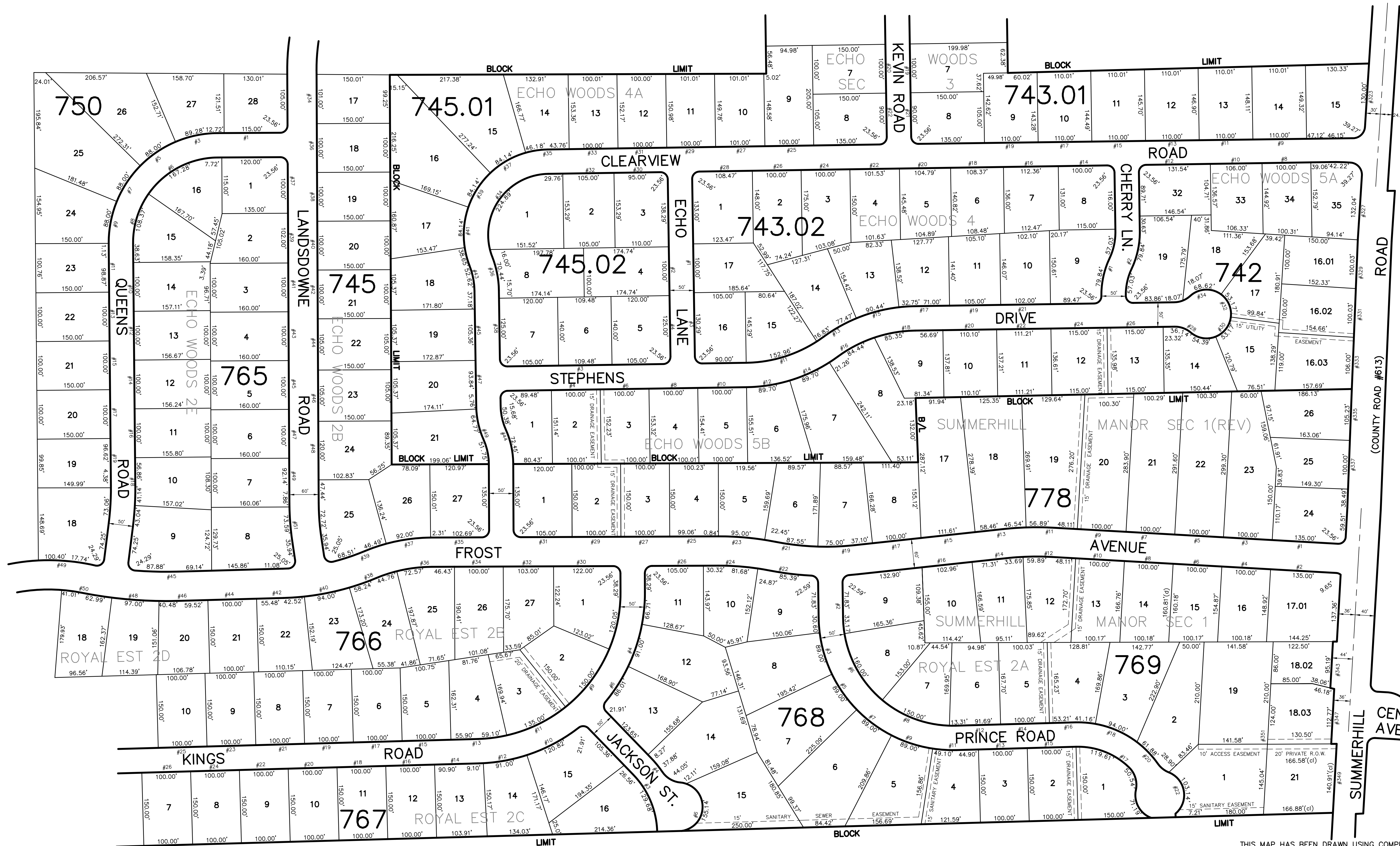


ADJOINS SHEET NO. 24.03, 26.03

ADJOINS SHEET NO. 24.02

ADJOINS SHEET NO. 26.01 & 26.03



THIS MAP HAS BEEN DRAWN USING COMPUTER AIDED DRAFTING/DESIGN (CAD/D) AND COORDINATE GEOMETRY (COCO)

NEW JERSEY DEPARTMENT OF THE TREASURY
 DIVISION OF TAXATION
 PROPERTY ADMINISTRATION
 APPROVED AS A TAX MAP PRESENT TO THE AUTHORITY OF
 R.J.A. RALLER & SONS
 FOR THE DIRECTOR, DIVISION OF TAXATION
Jamuel J. Coll C.T.A.
 JAMES J. COLL, CHIEF, LOCAL ASSESSMENT COMPLIANCE
Scott C. DeMatteo C.T.A.
 SCOTT C. DEMATTEO, CHIEF, FIELD REPRESENTATIVE
 DATE: DEC 20 2004 SERIAL NO. 852

TAX MAP
EAST BRUNSWICK TOWNSHIP
MIDDLESEX COUNTY, NEW JERSEY
 SCALE: 1" = 100' DATE :5-1-2003
JOHN D. BERGLER
 LICENSED LAND SURVEYOR No. 37181
 195 WASHINGTON ROAD
 SAYREVILLE, NEW JERSEY

ADJOINS SHEET NO. 25