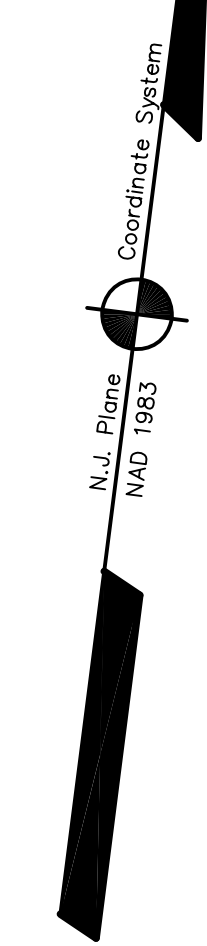


ADJOINS SHEET NO. 18 & 18.05

ADJOINS SHEET NO. 24.02

ADJOINS SHEET NO. 26.01



ADJOINS SHEET NO. 24.04

THIS MAP HAS BEEN DRAWN USING COMPUTER AIDED DRAFTING/DESIGN (CAD/D) AND COORDINATE GEOMETRY (COGO)

NEW JERSEY DEPARTMENT OF THE TREASURY
DIVISION OF TAXATION
PROPERTY ADMINISTRATION
APPROVED AS A TAX MAP PURSUANT TO THE AUTHORITY OF
N.J.A.C. 17:27 AND 17:28
FOR THE DIRECTOR, DIVISION OF TAXATION
James J. Cole C.T.A.
TAXES & COLLECTOR, LOCAL ASSESSMENT COMPLIANCE
Samuel C. DiDomenico C.T.A.
SALES & MARKETING, PROPERTY FIELD REPRESENTATIVE
DATE: DEC 20 2004 SERIAL NO. 052

TAX MAP
EAST BRUNSWICK TOWNSHIP
MIDDLESEX COUNTY, NEW JERSEY
SCALE: 1" = 100' DATE: 5-1-2003
JOHN D. BERGLER
LICENSED LAND SURVEYOR No. 37181
195 WASHINGTON ROAD
SAYREVILLE, NEW JERSEY