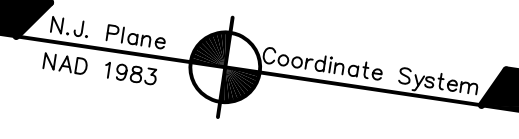
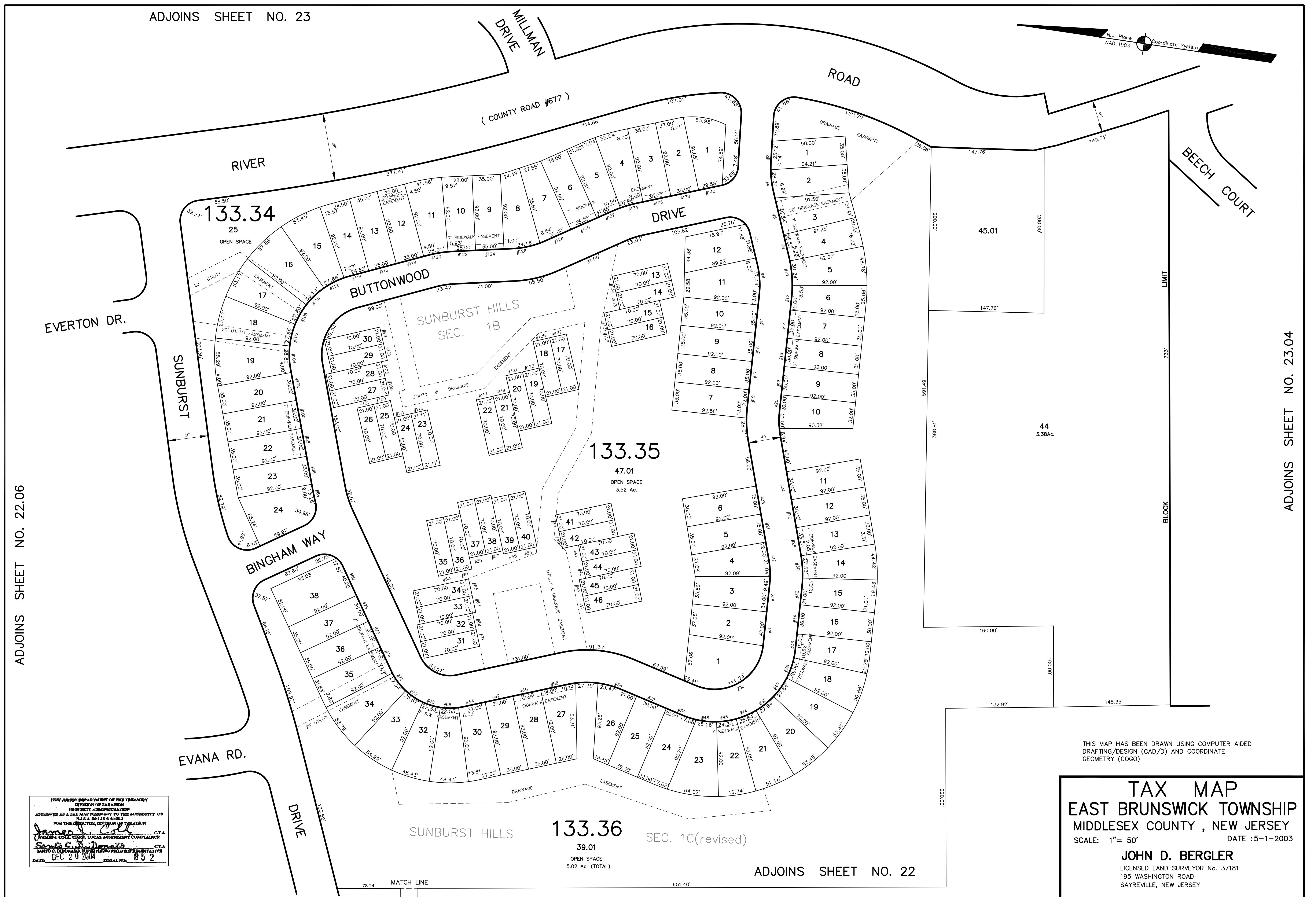


ADJOINS SHEET NO. 23



ADJOINS SHEET NO. 22.06

ADJOINS SHEET NO. 23.04



NEW JERSEY DEPARTMENT OF THE TREASURY  
DIVISION OF TAXATION  
PROPERTY ADMINISTRATION  
APPROVED AS A TAX MAP PURSUANT TO THE AUTHORITY OF  
N.J.A.C. 17:27 & 17:28  
FOR THE DIRECTOR, DIVISION OF TAXATION  
*James J. [Signature]* C.T.A.  
JAMES J. COLLIER, LOCAL ASSESSMENT COMPLIANCE  
*Santa C. DiDonato* C.T.A.  
SANTA C. DIDONATO, REPRESENTATIVE  
DATE: DEC 20 2004 SERIAL NO. 852

THIS MAP HAS BEEN DRAWN USING COMPUTER AIDED  
DRAFTING/DESIGN (CAD/D) AND COORDINATE  
GEOMETRY (COGO)

**TAX MAP**  
**EAST BRUNSWICK TOWNSHIP**  
**MIDDLESEX COUNTY, NEW JERSEY**  
SCALE: 1" = 50' DATE :5-1-2003  
**JOHN D. BERGLER**  
LICENSED LAND SURVEYOR No. 37181  
195 WASHINGTON ROAD  
SAYREVILLE, NEW JERSEY