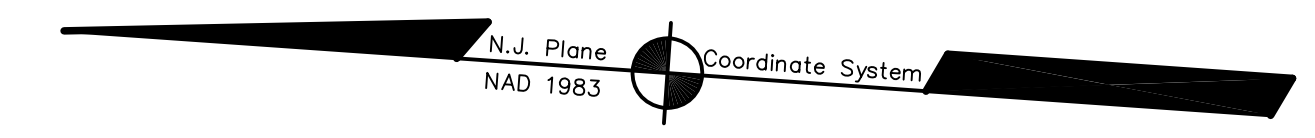


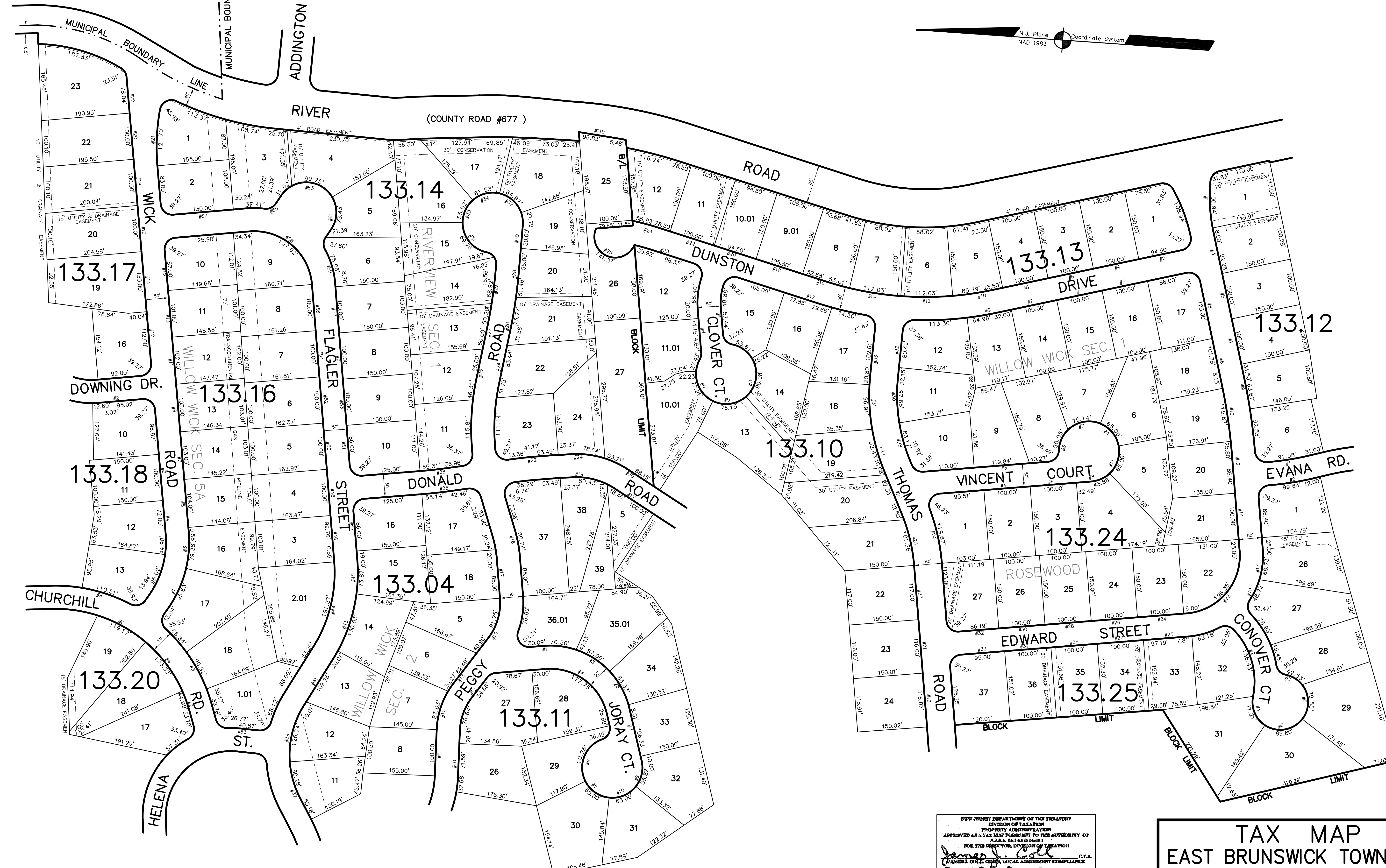
BOROUGH OF SOUTH RIVER

ADJOINS SHEET NO. 23.01



ADJOINS SHEET NO. 22.04

ADJOINS SHEET NO. 22.06



NEW JERSEY DEPARTMENT OF THE TREASURY
DIVISION OF TAXATION
PROPERTY ADMINISTRATION
APPROVED AS A TAX MAP PRESENT TO THE AUTHORITY OF
N.J.A.C. 17:27 2.10
FOR THE DIRECTOR, DIVISION OF TAXATION
JAMES P. COLE, C.T.A.
SANTA C. DEBORDO, REGISTERED FIELD REPRESENTATIVE
DATE: DEC 20 2004 SERIAL NO. 852

TAX MAP
EAST BRUNSWICK TOWNSHIP
MIDDLESEX COUNTY, NEW JERSEY
SCALE: 1" = 100' DATE: 5-1-2003
JOHN D. BERGLER
LICENSED LAND SURVEYOR No. 37181
195 WASHINGTON ROAD
SAYREVILLE, NEW JERSEY

THIS MAP HAS BEEN DRAWN USING COMPUTER AIDED
DRAFTING/DESIGN (CAD/D) AND COORDINATE
GEOMETRY (COGO)

ADJOINS SHEET NO. 22.01