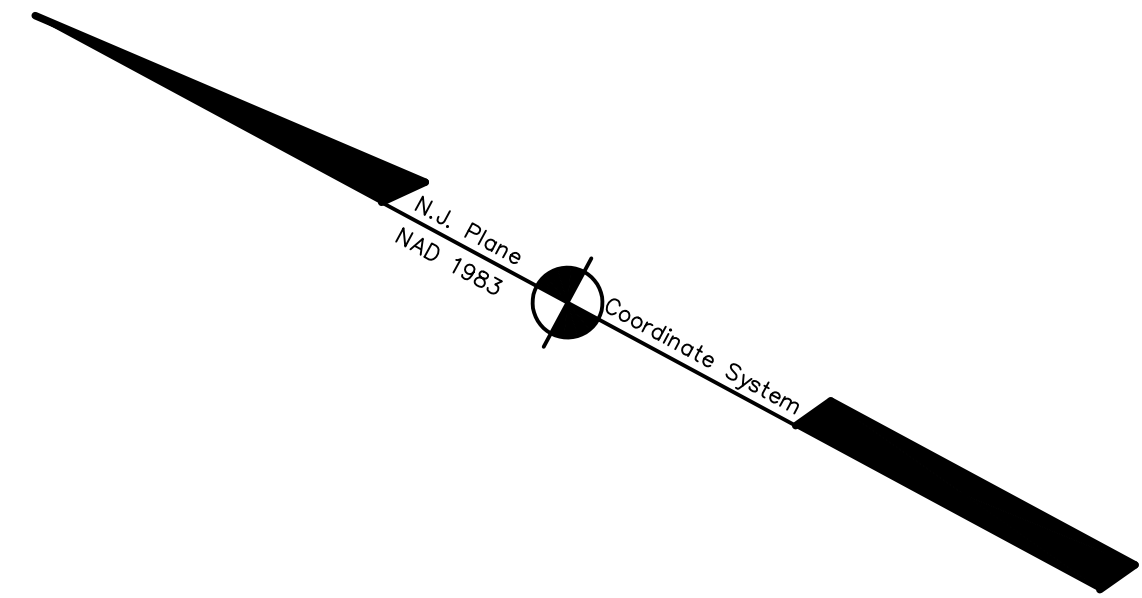
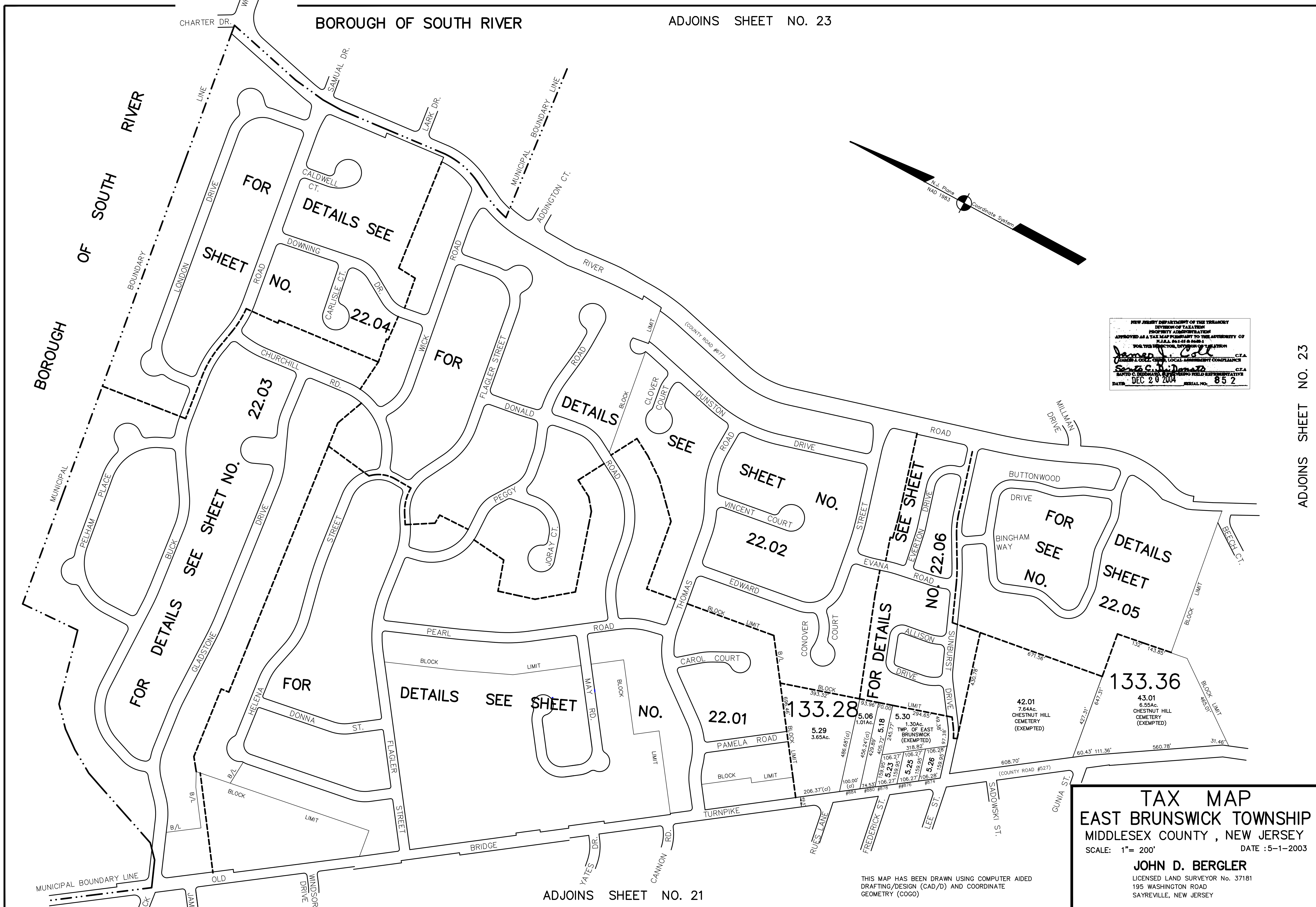


BOROUGH OF SOUTH RIVER

ADJOINS SHEET NO. 23



NEW JERSEY DEPARTMENT OF THE TREASURY  
 DIVISION OF TAXATION  
 PROPERTY ADMINISTRATION  
 APPROVED AS A TAX MAP PURSUANT TO THE AUTHORITY OF  
 N.J.A.C. 17:27 AND 17:28  
 FOR THE DIRECTOR, DIVISION OF TAXATION  
*James J. Cole* C.T.A.  
 JAMES J. COLE, CHIEF, LOCAL ASSESSMENT COMPLIANCE  
*Santo C. Hernandez* C.T.A.  
 SANTO C. HERNANDEZ, ASSISTING FIELD REPRESENTATIVE  
 DATE: DEC 20 2004 SERIAL NO. 652

ADJOINS SHEET NO. 23

**TAX MAP**  
**EAST BRUNSWICK TOWNSHIP**  
 MIDDLESEX COUNTY, NEW JERSEY  
 SCALE: 1" = 200' DATE: 5-1-2003  
**JOHN D. BERGLER**  
 LICENSED LAND SURVEYOR No. 37181  
 195 WASHINGTON ROAD  
 SAYREVILLE, NEW JERSEY

THIS MAP HAS BEEN DRAWN USING COMPUTER AIDED  
 DRAFTING/DESIGN (CAD/D) AND COORDINATE  
 GEOMETRY (COGO)

ADJOINS SHEET NO. 21