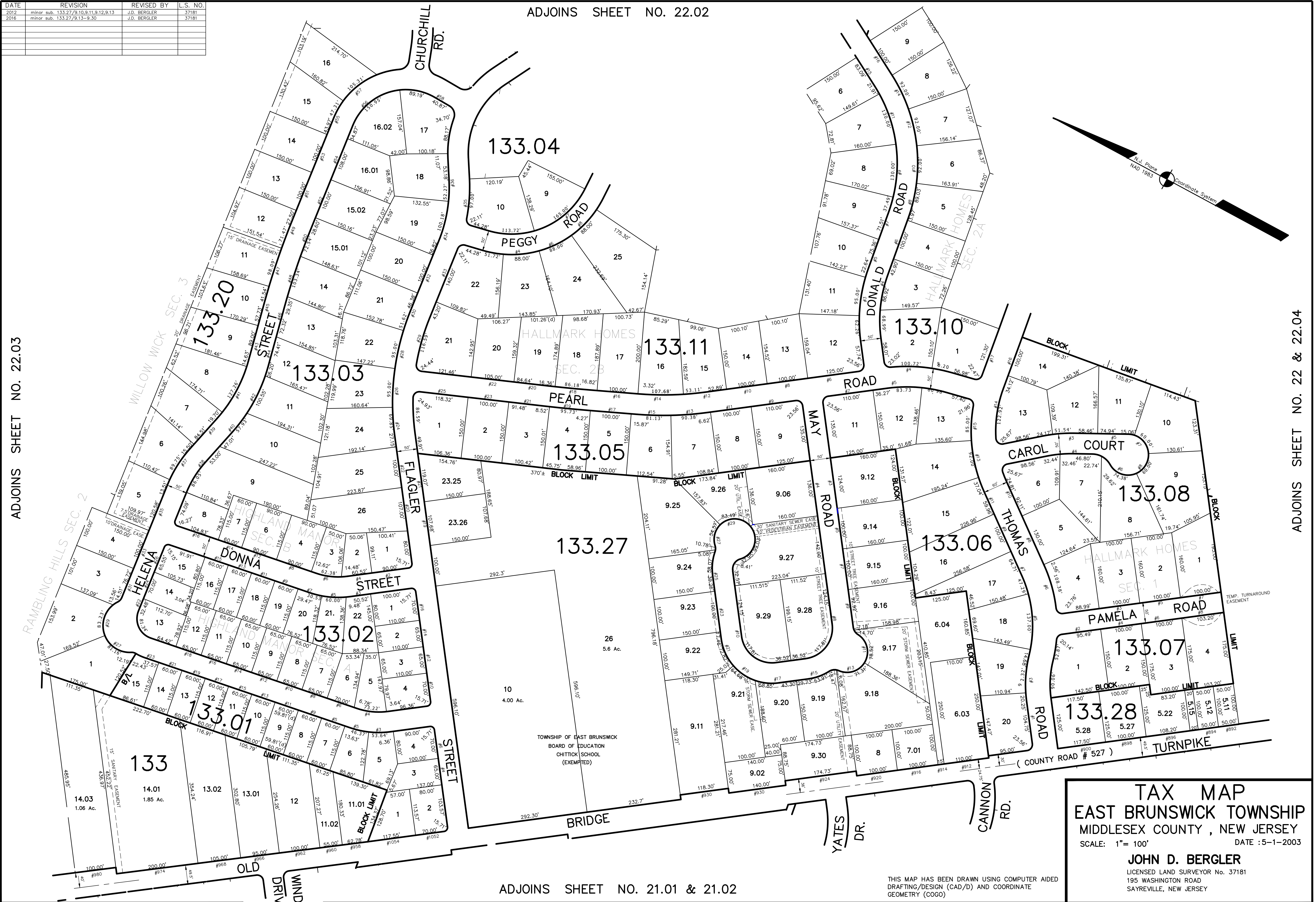


DATE	REVISION	REVISED BY	L.S. NO.
2012	minor sub. 133.27/9.10,9.11,9.12,9.13	J.D. BERGLER	37181
2016	minor sub. 133.27/9.13-9.30	J.D. BERGLER	37181

ADJOINS SHEET NO. 22.02

ADJOINS SHEET NO. 22.03

ADJOINS SHEET NO. 22 & 22.04



ADJOINS SHEET NO. 21.01 & 21.02

TAX MAP
EAST BRUNSWICK TOWNSHIP
 MIDDLESEX COUNTY, NEW JERSEY
 SCALE: 1" = 100'
 DATE: 5-1-2003

JOHN D. BERGLER
 LICENSED LAND SURVEYOR No. 37181
 195 WASHINGTON ROAD
 SAYREVILLE, NEW JERSEY

THIS MAP HAS BEEN DRAWN USING COMPUTER AIDED
 DRAFTING/DESIGN (CAD/D) AND COORDINATE
 GEOMETRY (COGO)