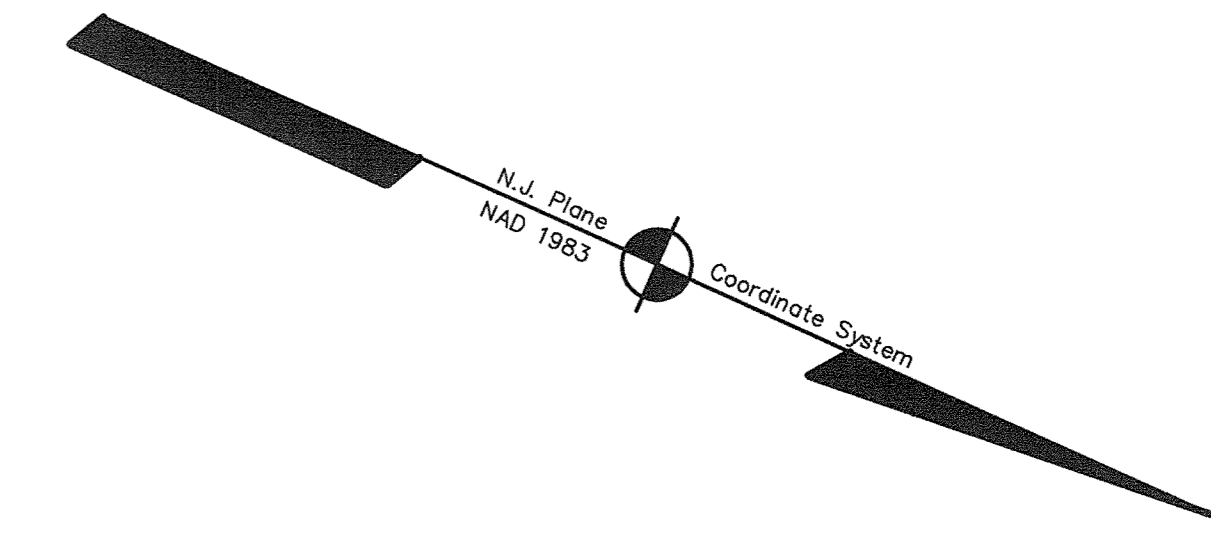
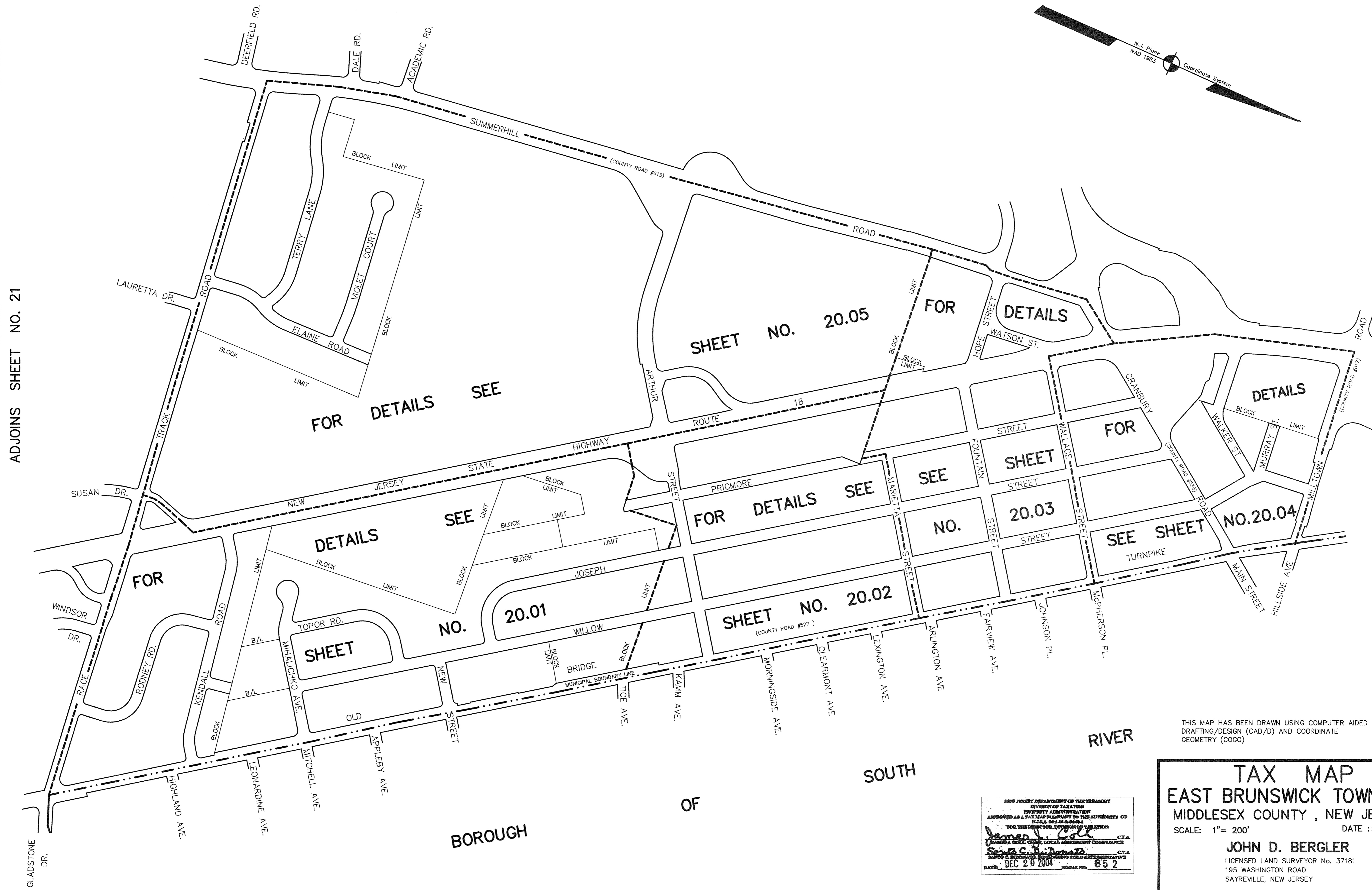


ADJOINS SHEET NO. 19



ADJOINS SHEET NO. 21

ADJOINS SHEET NO. 13.02



THIS MAP HAS BEEN DRAWN USING COMPUTER AIDED DRAFTING/DESIGN (CAD/D) AND COORDINATE GEOMETRY (COGO)

NEW JERSEY DEPARTMENT OF THE TREASURY
DIVISION OF TAXATION
PROPERTY ASSESSMENT
APPROVED AS A TAX MAP SUBMITTAL TO THE AUTHORITY OF
NJ.A.S. 17:27 & 28
FOR THE MUNICIPAL DIVISION OF TAXATION
James J. Cole C.T.A.
James J. Cole LOCAL ASSESSMENT COMMISSIONER
John D. Bergler C.T.A.
BARTO C. BERGMAN, REGISTERED FIELD REPRESENTATIVE
DATE: DEC 20 2004 SERIAL NO. 852

TAX MAP
EAST BRUNSWICK TOWNSHIP
MIDDLESEX COUNTY, NEW JERSEY
SCALE: 1" = 200' DATE: 5-1-2003
JOHN D. BERGLER
LICENSED LAND SURVEYOR No. 37181
195 WASHINGTON ROAD
SAYREVILLE, NEW JERSEY

BOROUGH OF SOUTH RIVER