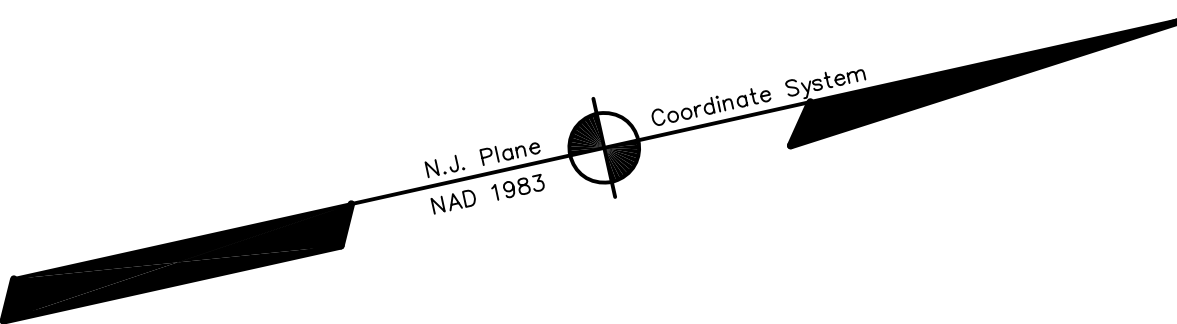


ADJOINS SHEET NO. 15.04



DUNHAMS CORNER ROAD

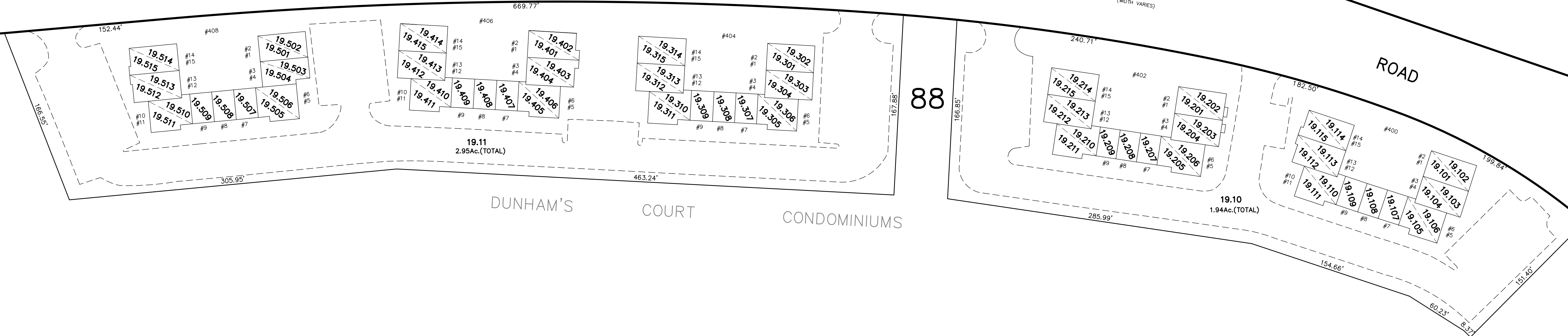
CRANBURY

(COUNTY ROAD #535)

ROAD

ADJOINS SHEET NO. 19

ADJOINS SHEET NO. 19



THIS MAP HAS BEEN DRAWN USING COMPUTER AIDED DRAFTING/DESIGN (CAD/D) AND COORDINATE GEOMETRY (COGO)

NEW JERSEY DEPARTMENT OF THE TREASURY  
DIVISION OF TAXATION  
PROPERTY ADMINISTRATION  
APPROVED AS A TAX MAP PURSUANT TO THE AUTHORITY OF  
NJ.A.S. 17:27 B.G. 3.03  
FOR THE DIRECTOR, DIVISION OF TAXATION  
*James J. Cole* C.T.A.  
TAXES & COLL. CHIEF, LOCAL ASSESSMENT COMPLIANCE  
*Samuel C. DeMatteo* C.T.A.  
SAMUEL C. DEMATTEO, REGISTERED FIELD REPRESENTATIVE  
DATE: DEC 20 2004 SEAL NO. 852

**TAX MAP**  
**EAST BRUNSWICK TOWNSHIP**  
**MIDDLESEX COUNTY, NEW JERSEY**  
SCALE: 1" = 50' DATE: 5-1-2003  
**JOHN D. BERGLER**  
LICENSED LAND SURVEYOR No. 37181  
195 WASHINGTON ROAD  
SAYREVILLE, NEW JERSEY

ADJOINS SHEET NO.19