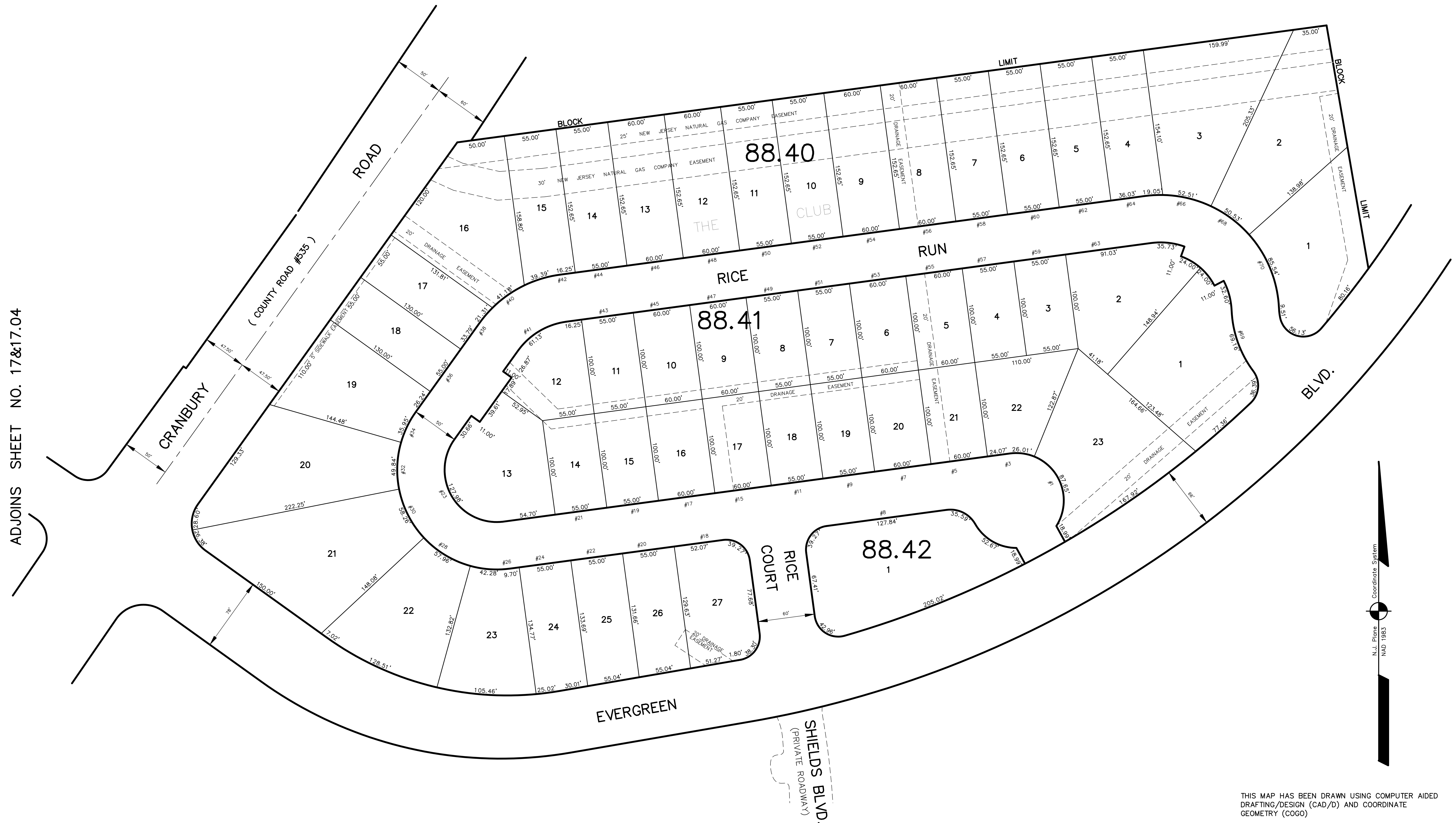


ADJOINS SHEET NO. 17&17.04

ADJOINS SHEET NO.18.04



THIS MAP HAS BEEN DRAWN USING COMPUTER AIDED DRAFTING/DESIGN (CAD/D) AND COORDINATE GEOMETRY (COGO)

TAX MAP
EAST BRUNSWICK TOWNSHIP
 MIDDLESEX COUNTY, NEW JERSEY
 SCALE: 1"= 50' DATE :5-1-2003
JOHN D. BERGLER
 LICENSED LAND SURVEYOR No. 37181
 195 WASHINGTON ROAD
 SAYREVILLE, NEW JERSEY

NEW JERSEY DEPARTMENT OF THE TREASURY
 DIVISION OF TAXATION
 PROPERTY ADMINISTRATION
 APPROVED AS A TAX MAP PURSUANT TO THE AUTHORITY OF
 N.J.A.C. 17:27 & 17:28
 FOR THE DIRECTOR, DIVISION OF TAXATION
[Signature] C.I.A.
 SANTI C. BENDIS, REGIONAL FIELD REPRESENTATIVE
 DATE: DEC 20 2004 SERIAL NO. 852

DATE	REVISION	REVISED BY	L.S. NO.
2017	COUNTY SIDEWALK EASE 88.4/17-19	J.D. BERGLER	37181