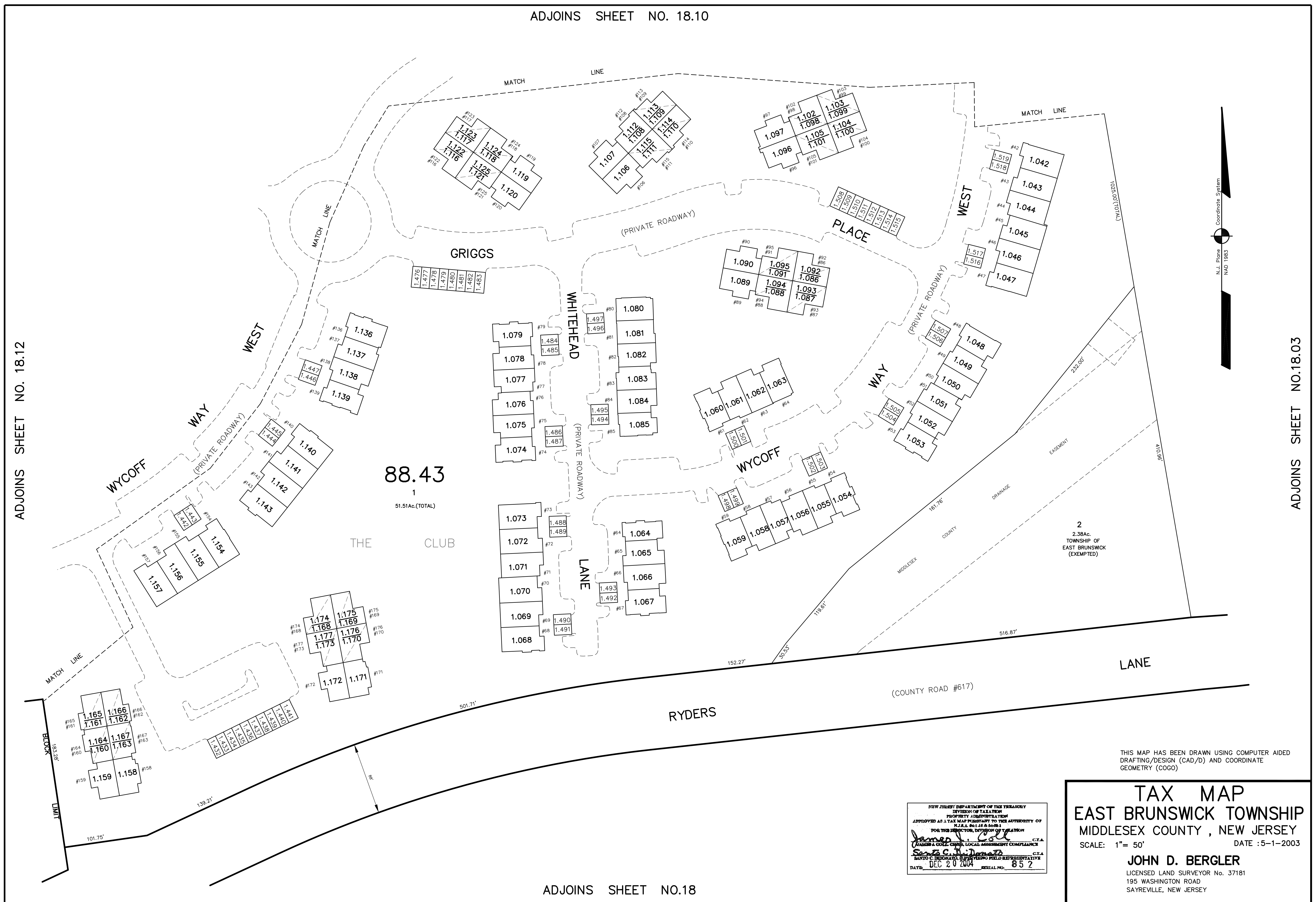


ADJOINS SHEET NO. 18.10

ADJOINS SHEET NO. 18.12

ADJOINS SHEET NO. 18.03



THIS MAP HAS BEEN DRAWN USING COMPUTER AIDED DRAFTING/DESIGN (CAD/D) AND COORDINATE GEOMETRY (COGO)

NEW JERSEY DEPARTMENT OF TREASURY  
 DIVISION OF TAXATION  
 PROPERTY ADMINISTRATION  
 APPROVED AS A TAX MAP PURSUANT TO THE AUTHORITY OF  
 N.J.A.C. 17:27 & 17:28  
 FOR THE DIRECTOR, DIVISION OF TAXATION  
 (FURNISH A COPY TO THE LOCAL GOVERNMENT COMPLIANCE  
 OFFICER)  
 JOHN D. BERGLER, C.T.A.  
 SANTO C. INDONATA, C.T.A.  
 DATE: DEC 20 2004 SERIAL NO. 852

**TAX MAP**  
**EAST BRUNSWICK TOWNSHIP**  
**MIDDLESEX COUNTY, NEW JERSEY**  
 SCALE: 1" = 50' DATE: 5-1-2003  
**JOHN D. BERGLER**  
 LICENSED LAND SURVEYOR No. 37181  
 195 WASHINGTON ROAD  
 SAYREVILLE, NEW JERSEY

ADJOINS SHEET NO. 18