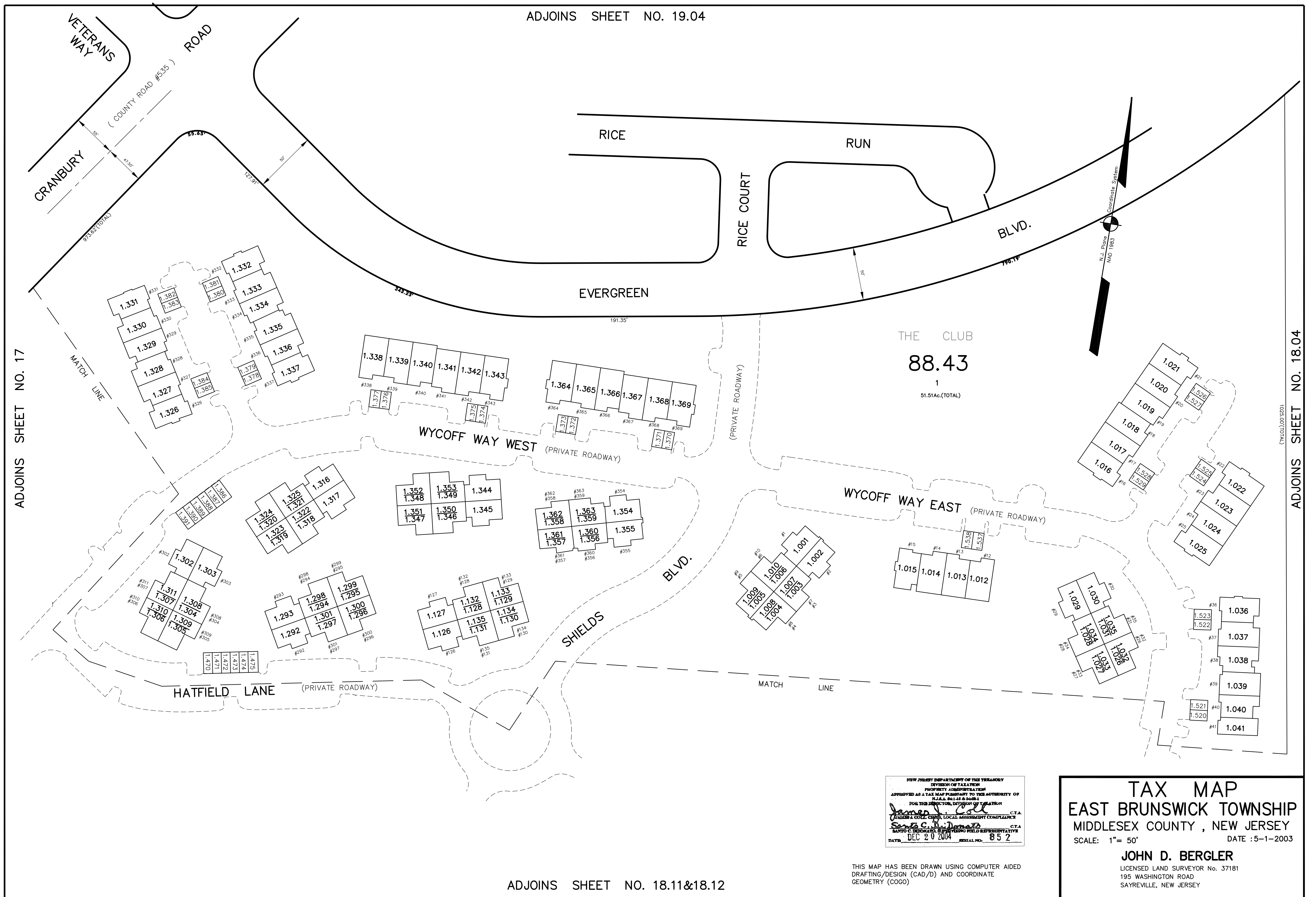


ADJOINS SHEET NO. 19.04



ADJOINS SHEET NO. 17

ADJOINS SHEET NO. 18.04

ADJOINS SHEET NO. 18.11&18.12

NEW JERSEY DEPARTMENT OF THE TREASURY
 DIVISION OF TAXATION
 PROPERTY APPROPRIATION
 APPROVED AS A TAX MAP PURSUANT TO THE AUTHORITY OF
 N.J.A.C. 17:27 & 17:28
 FOR THE DIRECTOR, DIVISION OF TAXATION
 JAMES A. COLE, COUNTY LOCAL ASSIGNMENT COMPLIANCE
 JOHN D. BERGLER, COUNTY LOCAL ASSIGNMENT COMPLIANCE
 DATE: DEC 20 2004 SERIAL NO. 852

THIS MAP HAS BEEN DRAWN USING COMPUTER AIDED
 DRAFTING/DESIGN (CAD/D) AND COORDINATE
 GEOMETRY (COGO)

TAX MAP
EAST BRUNSWICK TOWNSHIP
 MIDDLESEX COUNTY, NEW JERSEY
 SCALE: 1" = 50' DATE: 5-1-2003
JOHN D. BERGLER
 LICENSED LAND SURVEYOR No. 37181
 195 WASHINGTON ROAD
 SAYREVILLE, NEW JERSEY