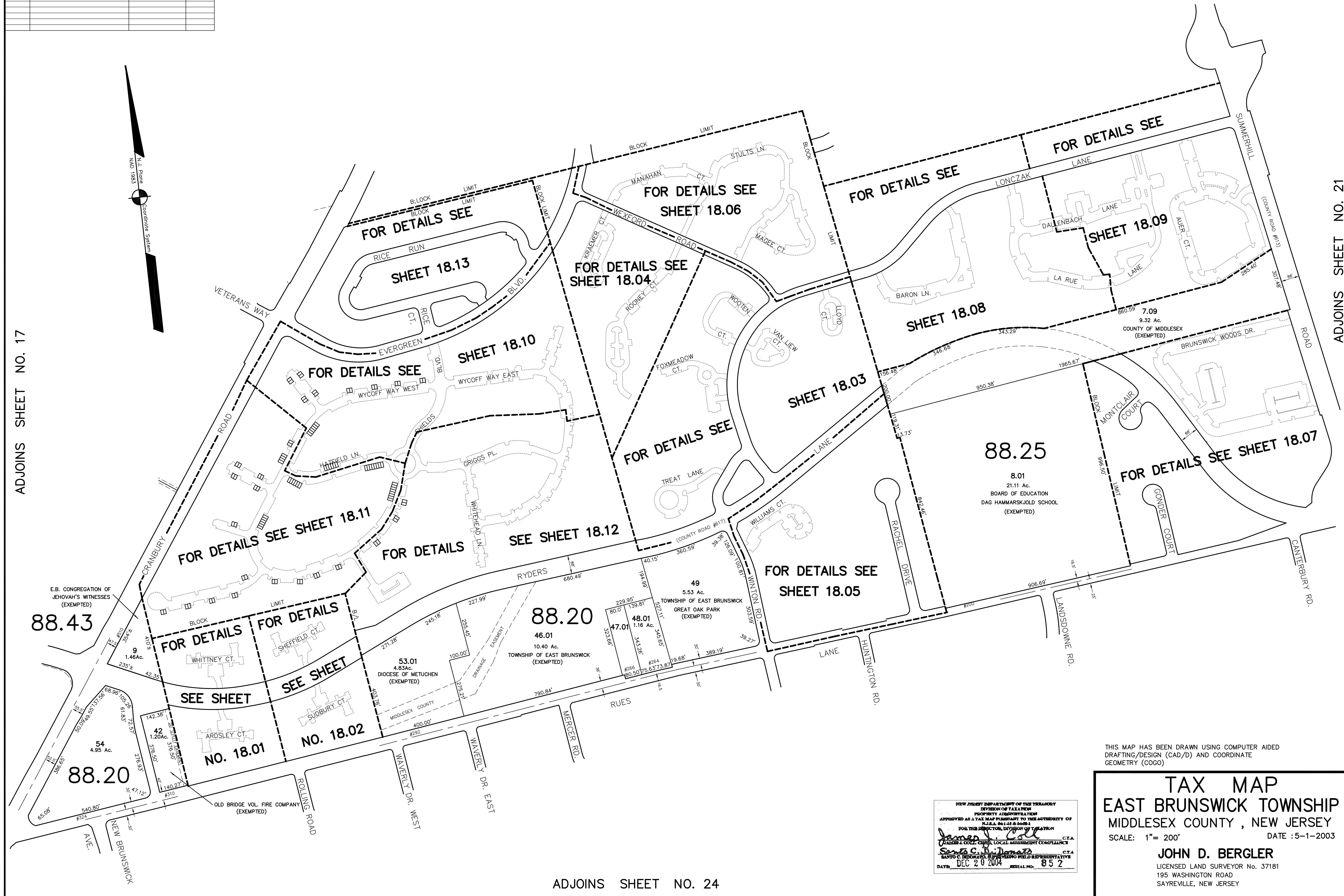


DATE	REVISION	REVISED BY	L.S. NO.
2006	new sheet 18.07	J.D. BERGLER	37181

ADJOINS SHEET NO.19



ADJOINS SHEET NO. 17

ADJOINS SHEET NO. 21

ADJOINS SHEET NO. 24

THIS MAP HAS BEEN DRAWN USING COMPUTER AIDED DRAFTING/DESIGN (CAD/D) AND COORDINATE GEOMETRY (COGO)

NEW JERSEY DEPARTMENT OF THE TREASURY
 DIVISION OF TAXATION
 PROPERTY ASSESSMENT
 APPROVED AS A TAX MAP PURSUANT TO THE AUTHORITY OF
 N.J.A.C. 17:27 & 17:28
 FOR THE DIRECTOR, DIVISION OF TAXATION
James J. Coll C.T.A.
Santo C. DiDonato C.T.A.
 DATE: DEC 20 2004 SERIAL NO.: 852

TAX MAP
EAST BRUNSWICK TOWNSHIP
 MIDDLESEX COUNTY, NEW JERSEY
 SCALE: 1" = 200' DATE :5-1-2003
JOHN D. BERGLER
 LICENSED LAND SURVEYOR No. 37181
 195 WASHINGTON ROAD
 SAYREVILLE, NEW JERSEY