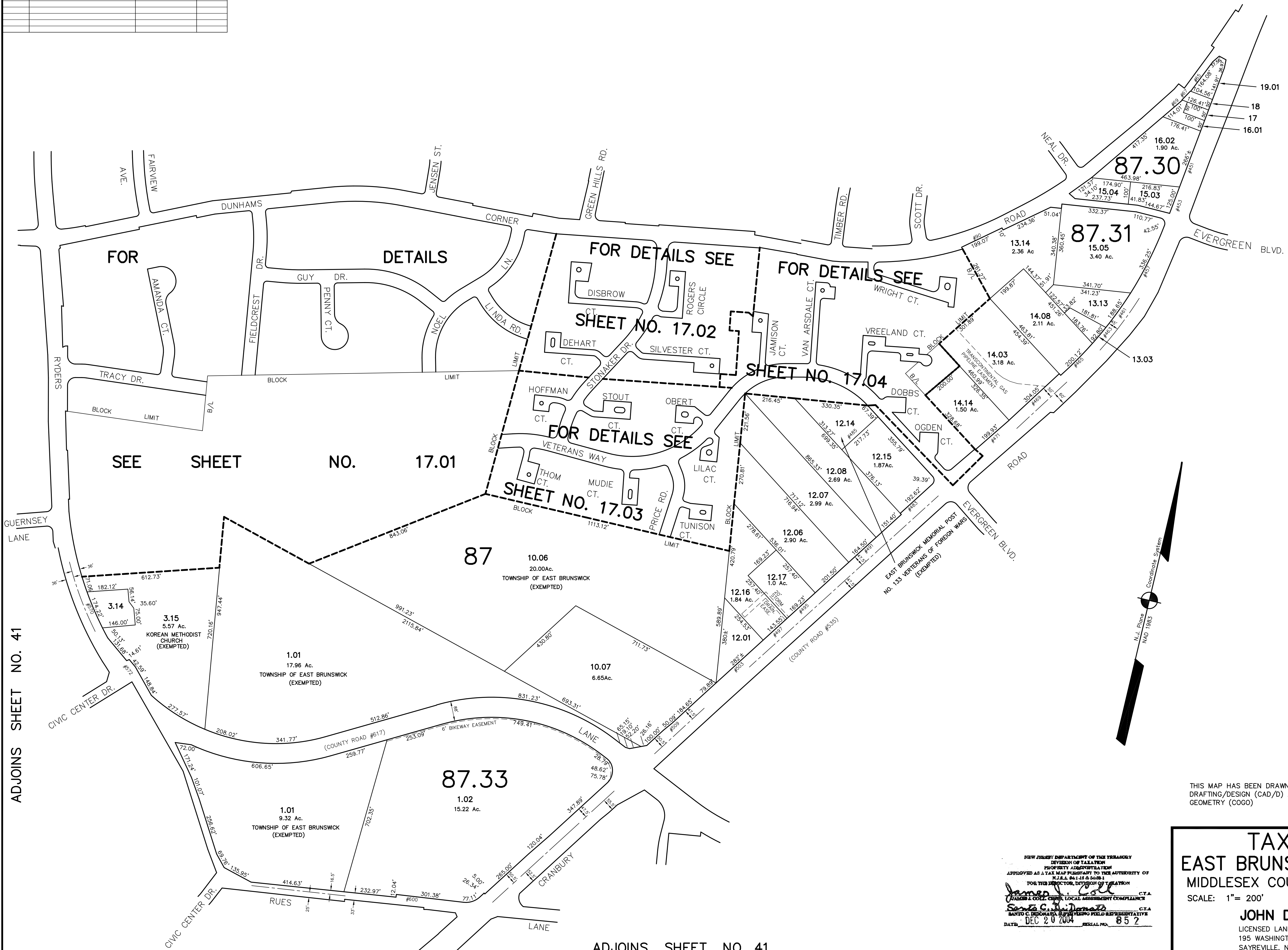


DATE	REVISION	REVISED BY	L.S. NO.
2009	minor subd. Block 87 Lots 12,16,12,17	Michael McGurt	38338

ADJOINS SHEET NO. 16



ADJOINS SHEET NO. 41

ADJOINS SHEET NO. 18

ADJOINS SHEET NO. 41

THIS MAP HAS BEEN DRAWN USING COMPUTER AIDED DRAFTING/DESIGN (CAD/D) AND COORDINATE GEOMETRY (COGO)

NEW JERSEY DEPARTMENT OF THE TREASURY  
 DIVISION OF TAXATION  
 PROPERTY ASSESSMENT  
 APPROVED AS A TAX MAP PRESENT TO THE AUTHORITY OF  
 JAMES J. COLE, CHIEF, LOCAL ASSESSMENT COMPLIANCE  
 DATE: DEC 20 2004 REG. NO. 852

**TAX MAP**  
**EAST BRUNSWICK TOWNSHIP**  
 MIDDLESEX COUNTY, NEW JERSEY  
 SCALE: 1" = 200'  
 DATE: 5-1-2003  
**JOHN D. BERGLER**  
 LICENSED LAND SURVEYOR No. 37181  
 195 WASHINGTON ROAD  
 SAYREVILLE, NEW JERSEY