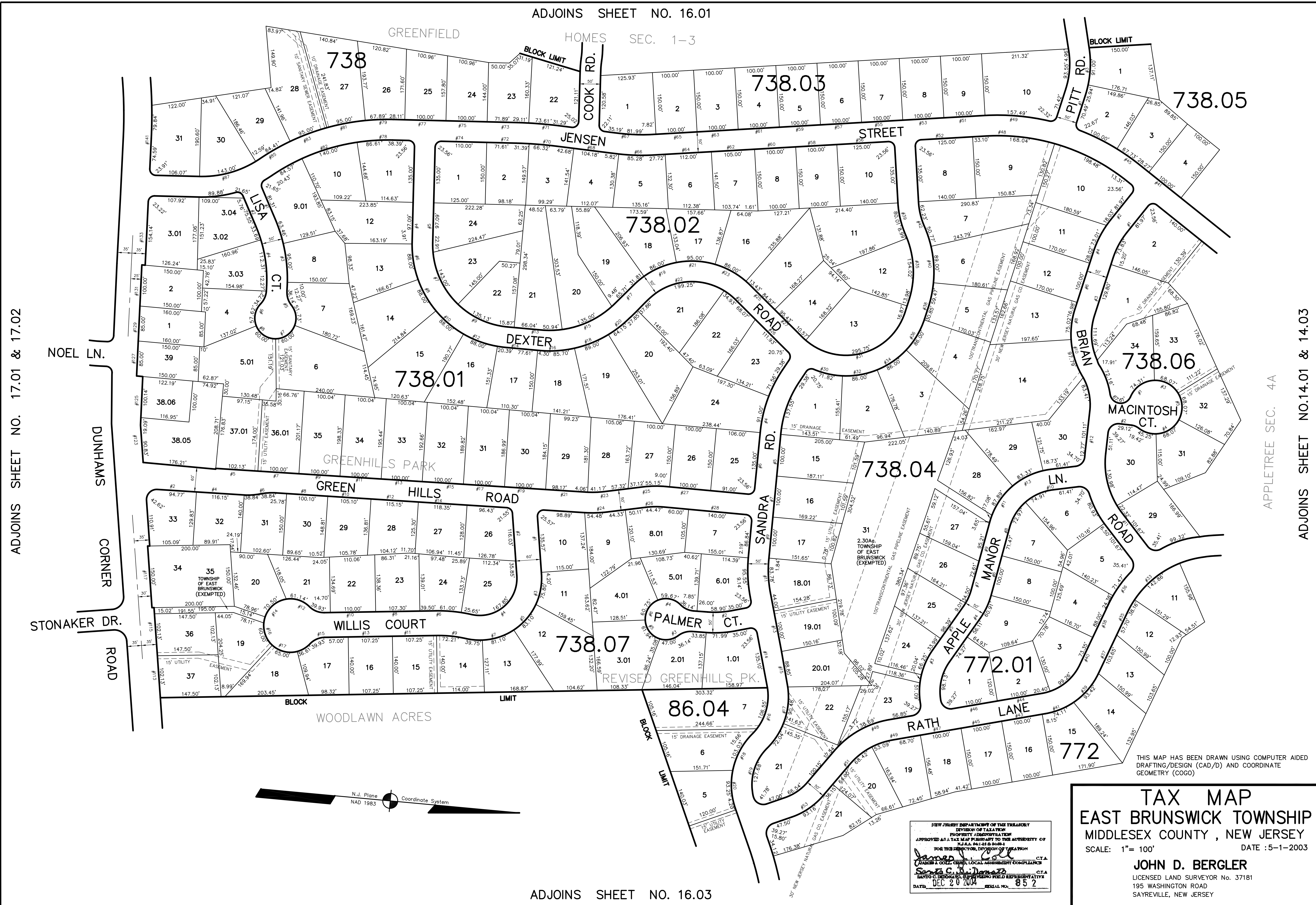


ADJOINS SHEET NO. 16.01

HOMES SEC. 1-3



ADJOINS SHEET NO. 17.01 & 17.02

APPLETREE SEC. 4A

ADJOINS SHEET NO.14.01 & 14.03

THIS MAP HAS BEEN DRAWN USING COMPUTER AIDED DRAFTING/DESIGN (CAD/D) AND COORDINATE GEOMETRY (COGO)

TAX MAP
EAST BRUNSWICK TOWNSHIP
MIDDLESEX COUNTY, NEW JERSEY
 SCALE: 1" = 100' DATE: 5-1-2003

JOHN D. BERGLER
 LICENSED LAND SURVEYOR No. 37181
 195 WASHINGTON ROAD
 SAYREVILLE, NEW JERSEY

NEW JERSEY DEPARTMENT OF THE TREASURY
 DIVISION OF TAXATION
 PROPERTY ADMINISTRATION
 APPROVED AS A TAX MAP PRESENTED TO THE AUTHORITY OF
 THE BOARD OF TAXATION
 FOR THE DIRECTOR, DIVISION OF TAXATION
James J. Coll C.T.A.
 TARRANT & COLL, CHIEF, LOCAL ASSESSMENT COMPLIANCE
Scott C. D'Amico C.T.A.
 HANTO CONSULTING & ENGINEERING FIELD REPRESENTATIVE
 DATE: DEC 20 2004 SERIAL NO.: 852

ADJOINS SHEET NO. 16.03