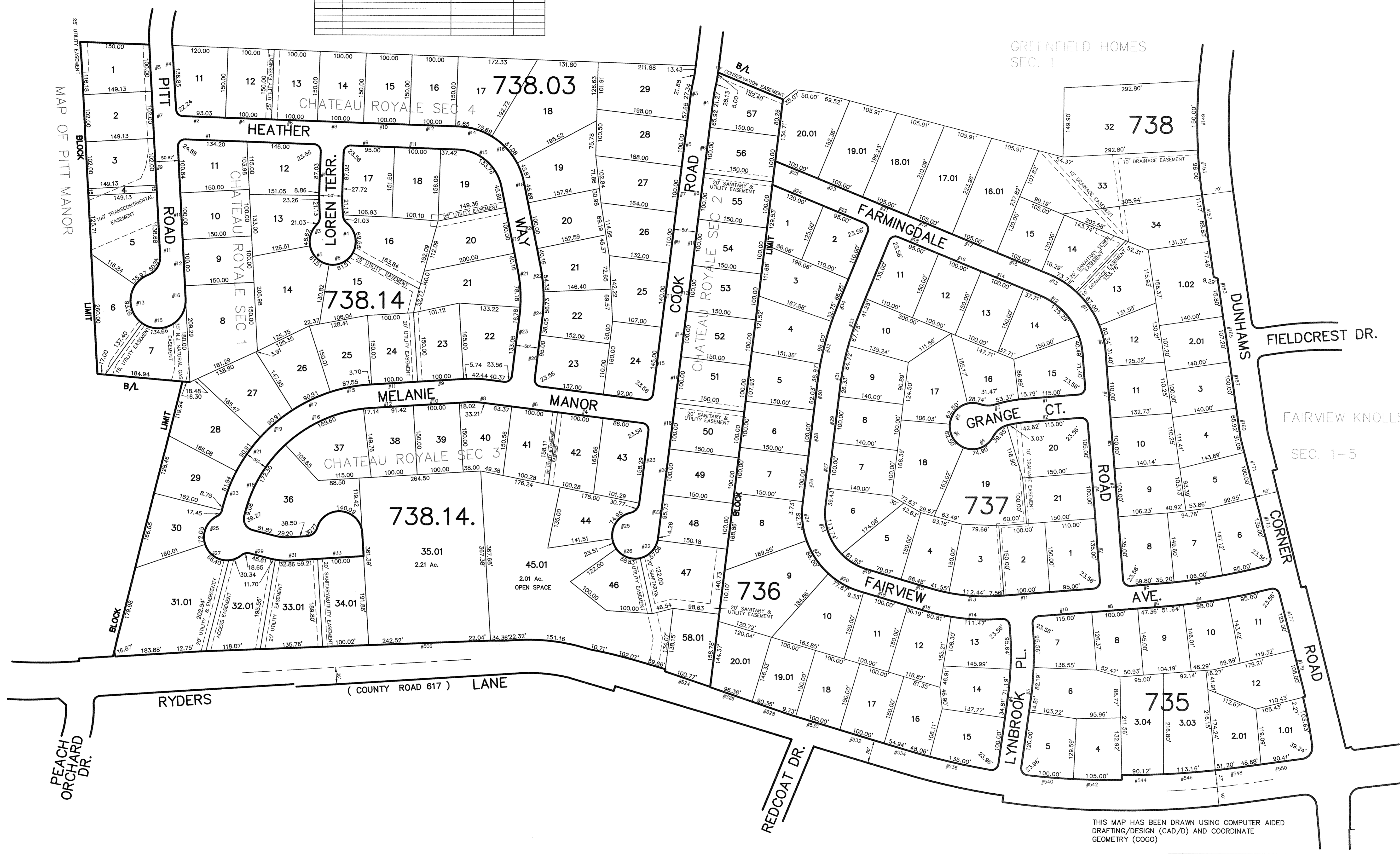


DATE	REVISION	REVISED BY	L.S. NO.
2005	738.14/34.35 rd widening	J.D. BERGLER	37181

ADJOINS SHEET NO.16.02

ADJOINS SHEET NO. 14.01

ADJOINS SHEET NO. 17.01



THIS MAP HAS BEEN DRAWN USING COMPUTER AIDED DRAFTING/DESIGN (CAD/D) AND COORDINATE GEOMETRY (COGO)

NEW JERSEY DEPARTMENT OF THE TREASURY
 DIVISION OF TAXATION
 PROPERTY ADMINISTRATION
 APPROVED AS A TAX MAP PURSUANT TO THE AUTHORITY OF
 P.L.A. 00-46 & 00-47
 JAMES J. COLL, C.T.A.
 COUNTY & LOCAL ASSESSMENT COMPLIANCE
 DATE: DEC 20 2004 SERIAL NO. 852

TAX MAP
EAST BRUNSWICK TOWNSHIP
MIDDLESEX COUNTY, NEW JERSEY
 SCALE: 1" = 100' DATE: 5-1-2003
JOHN D. BERGLER
 LICENSED LAND SURVEYOR No. 37181
 195 WASHINGTON ROAD
 SAYREVILLE, NEW JERSEY

ADJOINS SHEET NO. 38