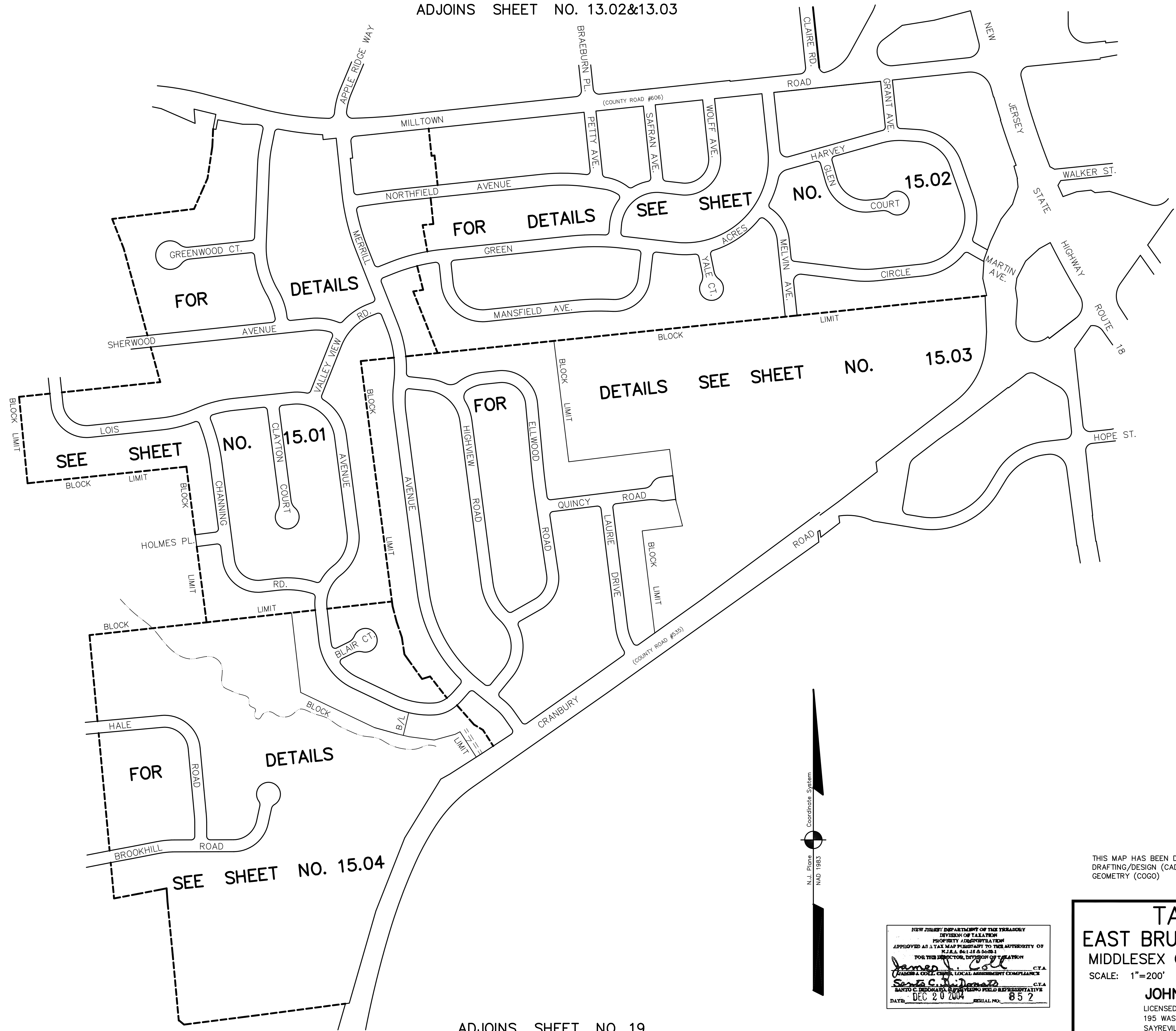


ADJOINS SHEET NO. 13.02&13.03

ADJOINS SHEET NO. 14.02&14.03

ADJOINS SHEET NO. 20.04



ADJOINS SHEET NO. 19

THIS MAP HAS BEEN DRAWN USING COMPUTER AIDED DRAFTING/DESIGN (CAD/D) AND COORDINATE GEOMETRY (COGO)

NEW JERSEY DEPARTMENT OF TREASURY  
 DIVISION OF TAXATION  
 PROPERTY IDENTIFICATION  
 APPROVED AS A TAX MAP PURSUANT TO THE AUTHORITY OF  
 N.J.A.C. 17:27 & 20:28.1  
 FOR THE DIRECTOR, DIVISION OF TAXATION  
*James J. Gatt* C.Y.A.  
 JAMES J. GATT, CHIEF, LOCAL ASSESSMENT COMPLIANCE  
*John D. Bergler* C.Y.A.  
 JOHN D. BERGLER, ASSISTING FIELD REPRESENTATIVE  
 DATE: DEC 20 2004 SERIAL NO. 852

**TAX MAP**  
**EAST BRUNSWICK TOWNSHIP**  
**MIDDLESEX COUNTY, NEW JERSEY**  
 SCALE: 1"=200' DATE :5-1-2003  
**JOHN D. BERGLER**  
 LICENSED LAND SURVEYOR No. 37181  
 195 WASHINGTON ROAD  
 SAYREVILLE, NEW JERSEY