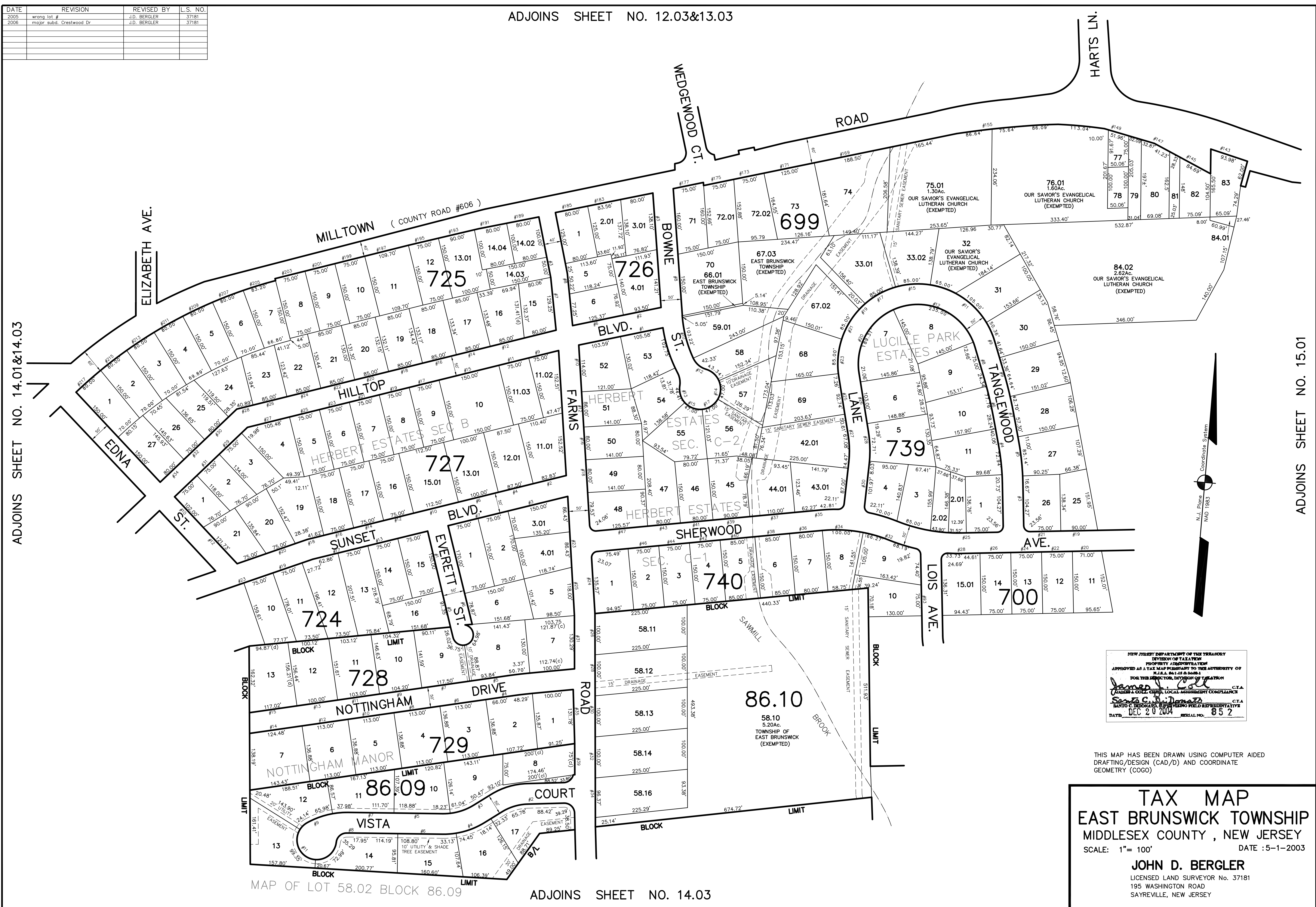


ADJOINS SHEET NO. 12.03&13.03

DATE	REVISION	REVISED BY	L.S. NO.
2005	wrong lot #	J.D. BERGLER	37181
2006	major subd. Crestwood Dr	J.D. BERGLER	37181



NEW JERSEY DEPARTMENT OF THE TREASURY
 DIVISION OF TAXATION
 PROPERTY ADJUSTMENT
 APPROVED AS A TAX MAP PRESENTED TO THE AUTHORITY OF
 N.J.A.C. 17:27 & 28.1
 FOR THE DIRECTOR, DIVISION OF TAXATION
 JAMES N. COLE, C.T.A.
 STATE & COUNTY LOCAL ASSESSMENT COMPLIANCE
 JOHN D. BERGLER, C.T.A.
 DATE: DEC 20 2004 SERIAL NO. 852

THIS MAP HAS BEEN DRAWN USING COMPUTER AIDED
 DRAFTING/DESIGN (CAD/D) AND COORDINATE
 GEOMETRY (COGO)

TAX MAP
EAST BRUNSWICK TOWNSHIP
MIDDLESEX COUNTY, NEW JERSEY
 SCALE: 1" = 100' DATE: 5-1-2003
JOHN D. BERGLER
 LICENSED LAND SURVEYOR No. 37181
 195 WASHINGTON ROAD
 SAYREVILLE, NEW JERSEY

MAP OF LOT 58.02 BLOCK 86.09 ADJOINS SHEET NO. 14.03