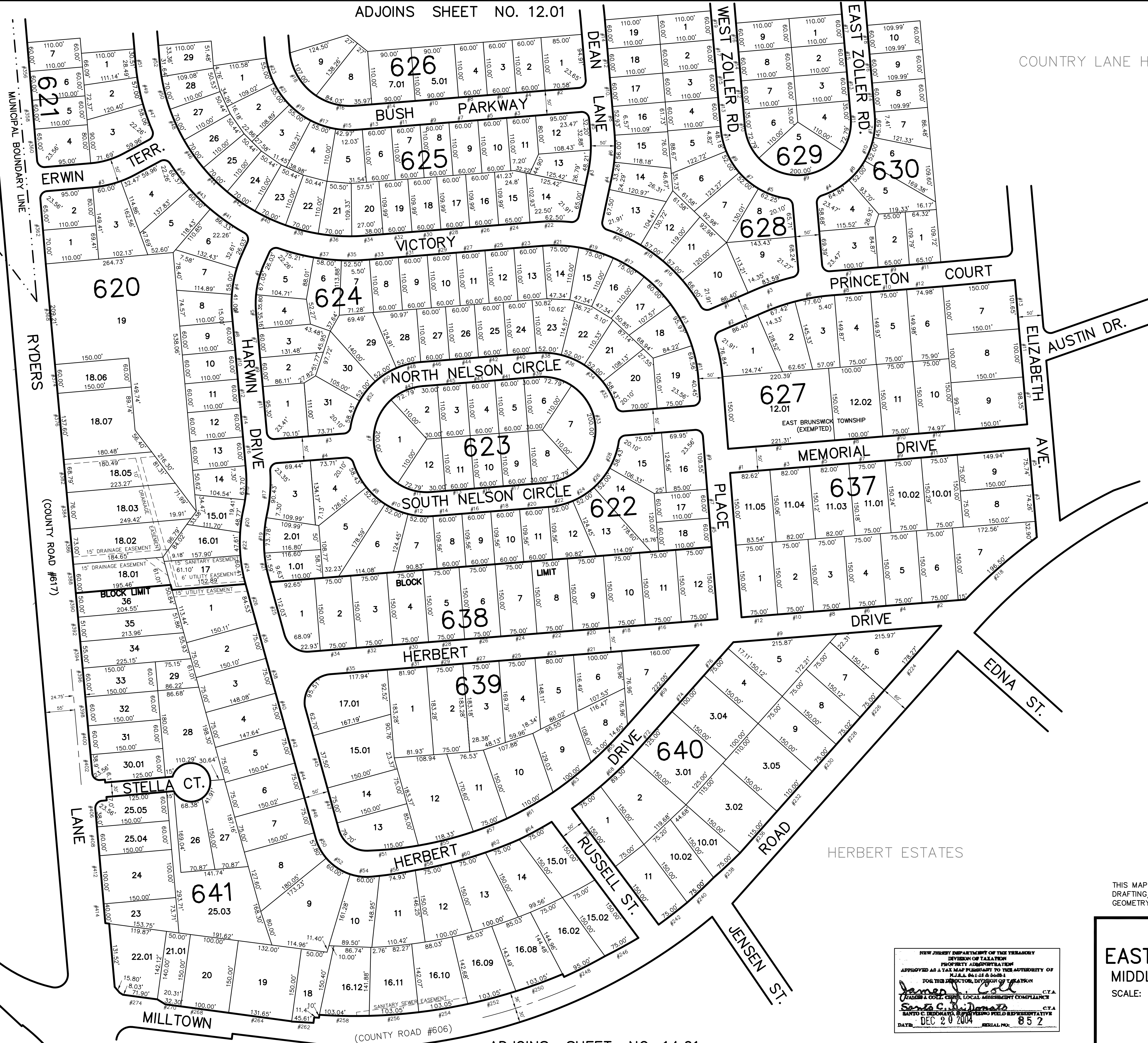


COUNTRY LANE HOMES SEC. 1 & 2

BOROUGH OF
MILLTOWN

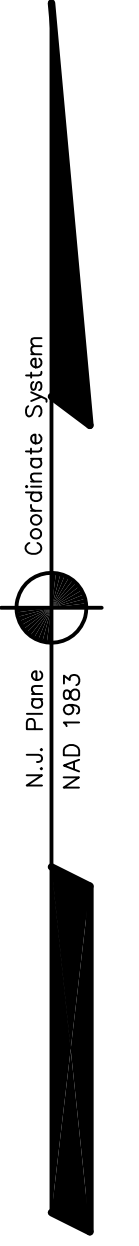


ADJOINS SHEET NO. 12.01

ADJOINS SHEET NO. 14.01

ADJOINS SHEET NO. 39

ADJOINS SHEET NO. 12.03



THIS MAP HAS BEEN DRAWN USING COMPUTER AIDED DRAFTING/DESIGN (CAD/D) AND COORDINATE GEOMETRY (COGO)

TAX MAP
EAST BRUNSWICK TOWNSHIP
 MIDDLESEX COUNTY, NEW JERSEY
 SCALE: 1" = 100' DATE : 5-1-2003

JOHN D. BERGLER
 LICENSED LAND SURVEYOR No. 37181
 195 WASHINGTON ROAD
 SAYREVILLE, NEW JERSEY

NEW JERSEY DEPARTMENT OF THE TREASURY
 DIVISION OF TAXATION
 APPROVED AS A TAX MAP PURSUANT TO THE AUTHORITY OF
 P.L. 2002-106, LOCAL ASSESSMENT COMPLIANCE
 FOR THE DIRECTOR, DIVISION OF TAXATION
Jamie J. Cole C.T.A.
Santo C. DiMatteo C.T.A.
 DATE: DEC 20 2004 SERIAL NO. 652