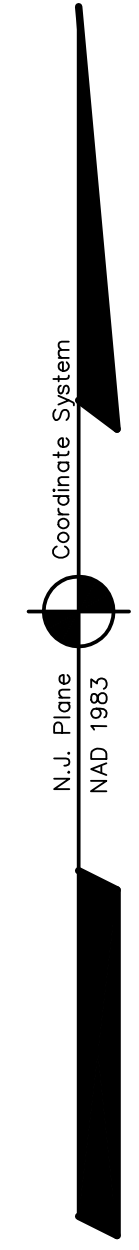
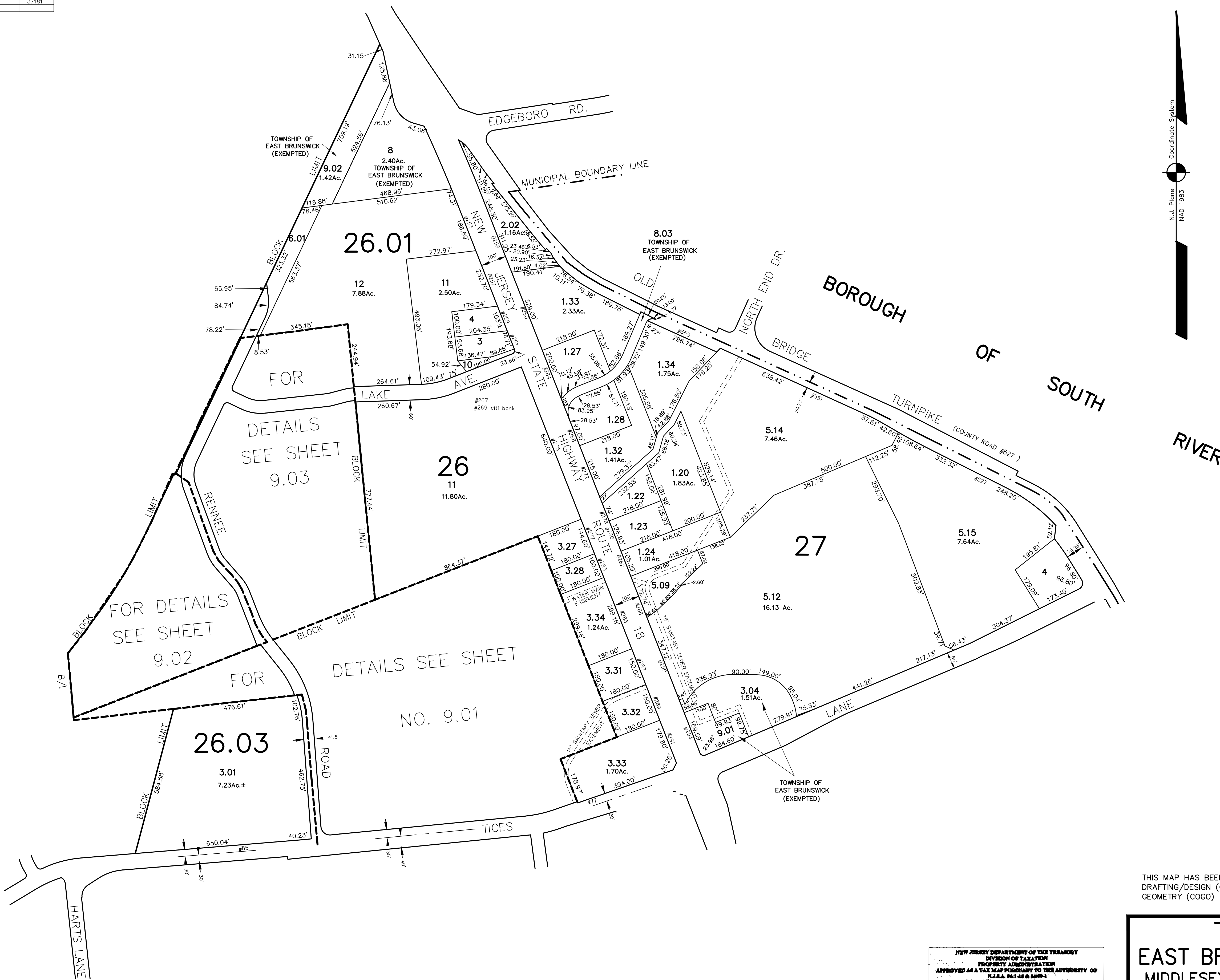


DATE	REVISION	REVISED BY	L.S. NO.
2005	add missing lot distance	J.D. BERGLER	37181
2006	new lots 27/3.04,5.11	J.D. BERGLER	37181
2011	add sheets 9.02 & 9.03	J.D. BERGLER	37181
2012	Road Wide 27/2.02	J.D. BERGLER	37181
2012	Minor Subd 27/5.08, 5.11	J.D. BERGLER	37181
2013	27/5.13 Minor Sub-RD Widening	J.D. BERGLER	37181
2014	new lot 26.01/6.01	J.D. BERGLER	37181

ADJOINS SHEET NO. 8.01,8.02&3.03

ADJOINS SHEET NO. 8.02&8.03



THIS MAP HAS BEEN DRAWN USING COMPUTER AIDED DRAFTING/DESIGN (CAD/D) AND COORDINATE GEOMETRY (COGO)

NEW JERSEY DEPARTMENT OF THE TREASURY
 DIVISION OF TAXATION
 PROPERTY ADMINISTRATION
 APPROVED AS A TAX MAP PURSUANT TO THE AUTHORITY OF
 T.C.A. §§ 14B & 14B-1
 FOR THE DIRECTOR, DIVISION OF TAXATION
James J. Kelly C.T.A.
 COUNTY CLERK, LOCAL ASSESSMENT COMPLIANCE
John D. Bergler C.T.A.
 BARTO C. DECONATO, REGISTERED FIELD REPRESENTATIVE
 DATE: DEC 20 2004 REGAL NO. 852

TAX MAP
EAST BRUNSWICK TOWNSHIP
 MIDDLESEX COUNTY, NEW JERSEY
 SCALE: 1" = 200'
 DATE: 5-1-2003
JOHN D. BERGLER
 LICENSED LAND SURVEYOR No. 37181
 195 WASHINGTON ROAD
 SAYREVILLE, NEW JERSEY

ADJOINS SHEET NO. 11