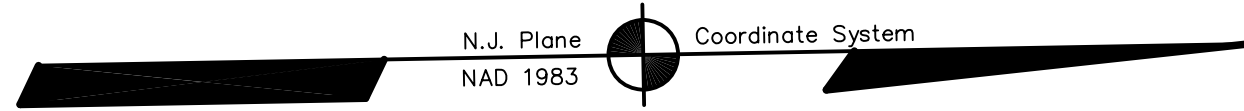
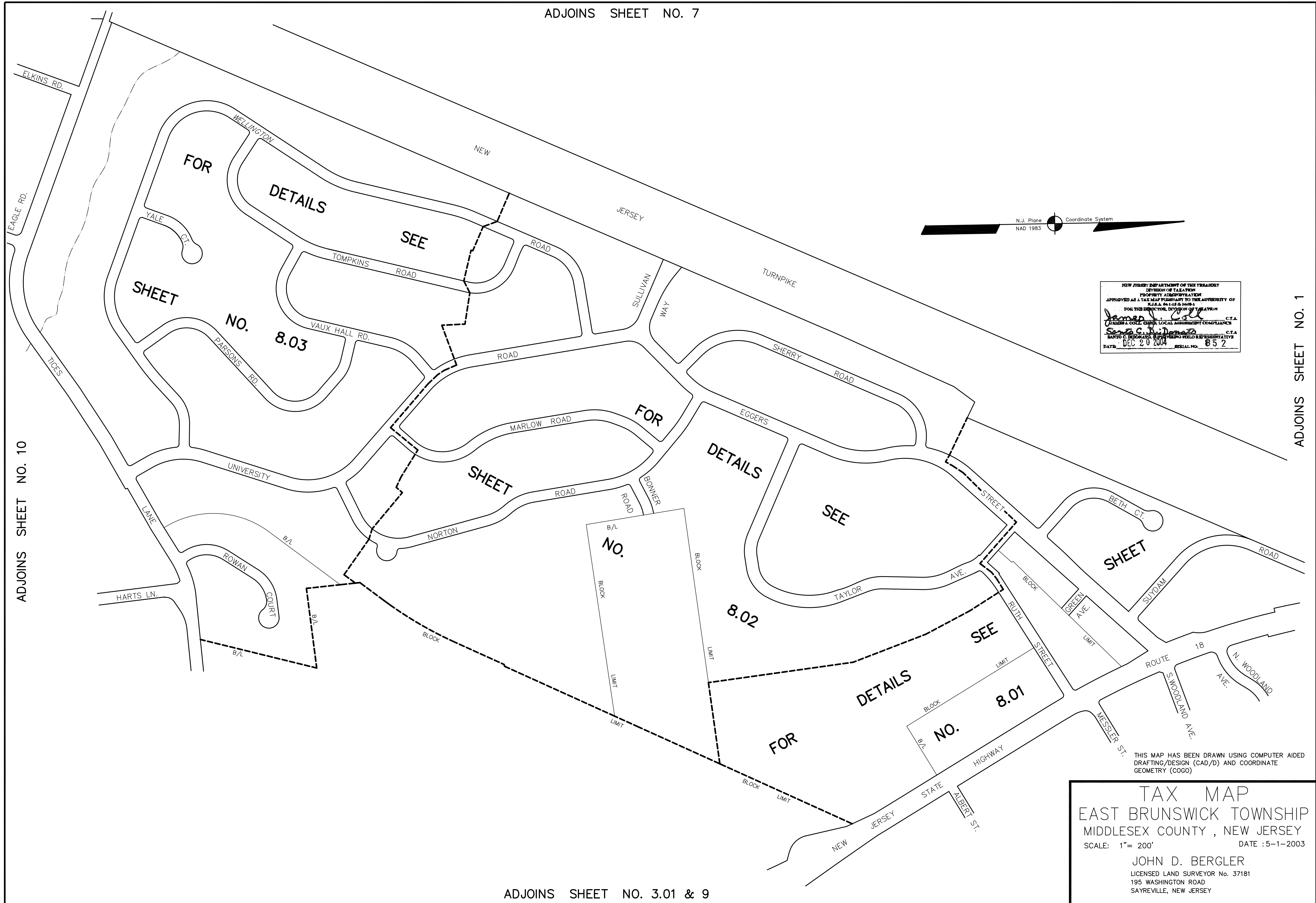


ADJOINS SHEET NO. 7



NEW JERSEY DEPARTMENT OF THE TREASURY
 DIVISION OF TAXATION
 PROPERTY APPRAISAL
 APPROVED AS A TAX MAP PRESENT TO THE AUTHORITY OF
 N.J.A.C. 17:27 & 17:28
 FOR THE DIRECTOR, DIVISION OF TAXATION
James J. Cole C.T.A.
 JAMES J. COLE, CHIEF, LOCAL ASSESSMENT COMPLIANCE
Sam C. Williams C.T.A.
 SAM C. WILLIAMS, SUPERVISOR FIELD REPRESENTATIVE
 DATE: DEC 20 2004 SERIAL NO. 852

ADJOINS SHEET NO. 10

ADJOINS SHEET NO. 1

ADJOINS SHEET NO. 3.01 & 9

TAX MAP
 EAST BRUNSWICK TOWNSHIP
 MIDDLESEX COUNTY, NEW JERSEY
 SCALE: 1" = 200' DATE: 5-1-2003
 JOHN D. BERGLER
 LICENSED LAND SURVEYOR No. 37181
 195 WASHINGTON ROAD
 SAYREVILLE, NEW JERSEY

THIS MAP HAS BEEN DRAWN USING COMPUTER AIDED
 DRAFTING/DESIGN (CAD/D) AND COORDINATE
 GEOMETRY (COGO)