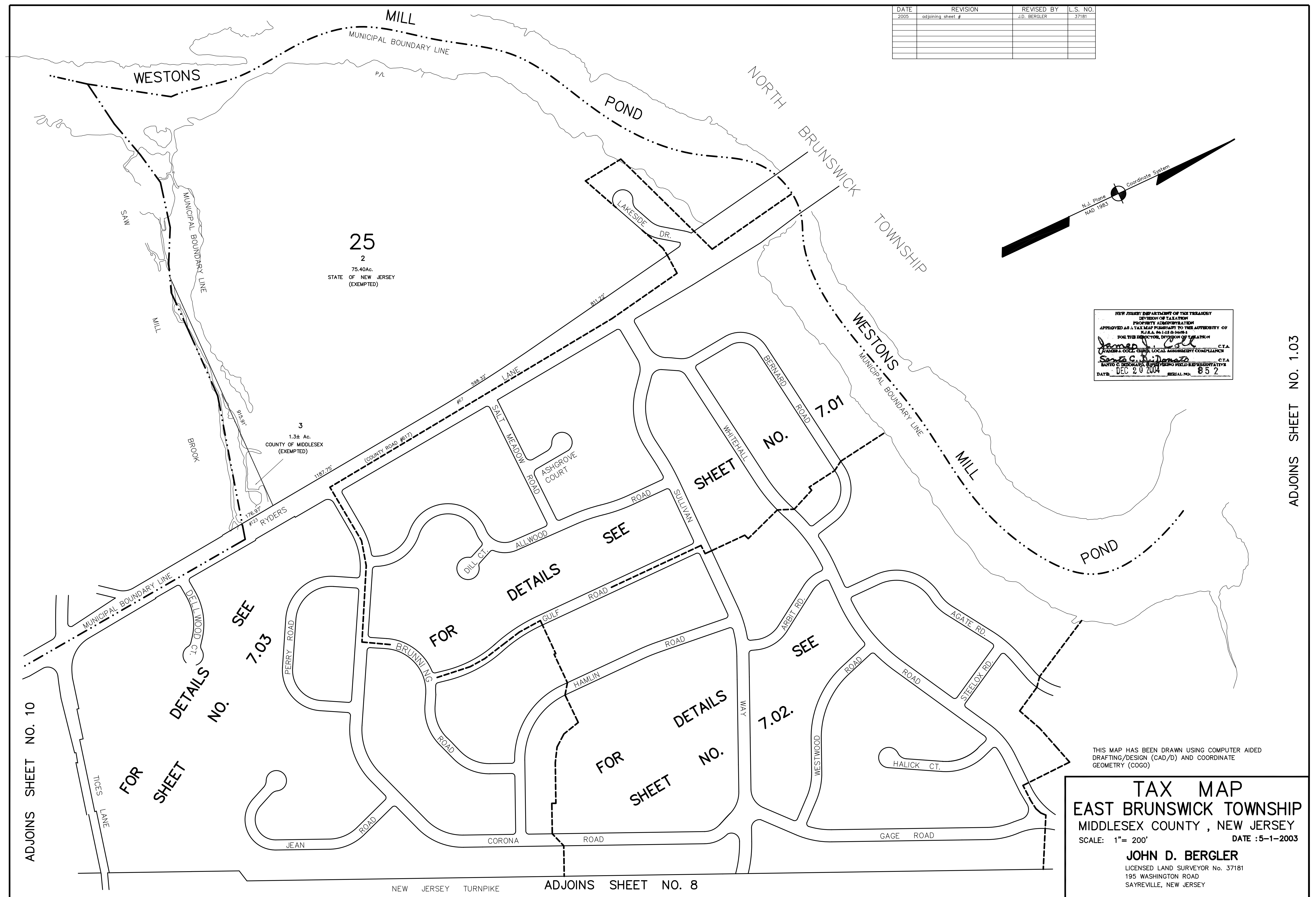


DATE	REVISION	REVISED BY	L.S. NO.
2005	adjoining sheet #	J.D. BERGLER	37181



25
2
75.40Ac.
STATE OF NEW JERSEY
(EXEMPTED)

3
1.3± Ac.
COUNTY OF MIDDLESEX
(EXEMPTED)

NEW JERSEY DEPARTMENT OF THE TREASURY
DIVISION OF TAXATION
PROPERTY ADMINISTRATION
APPROVED AS A TAX MAP PURSUANT TO THE AUTHORITY OF
N.J.A.C. 17:27 & 17:28
FOR THE DIRECTOR, DIVISION OF TAXATION
James J. Callahan C.T.A.
TREASURER
John D. Bergler C.T.A.
SAYREVILLE, NEW JERSEY FIELD REPRESENTATIVE
DATE: DEC 20 2004 SERIAL NO. 852

THIS MAP HAS BEEN DRAWN USING COMPUTER AIDED
DRAFTING/DESIGN (CAD/D) AND COORDINATE
GEOMETRY (COGO)

TAX MAP
EAST BRUNSWICK TOWNSHIP
MIDDLESEX COUNTY, NEW JERSEY
SCALE: 1" = 200' DATE: 5-1-2003
JOHN D. BERGLER
LICENSED LAND SURVEYOR No. 37181
195 WASHINGTON ROAD
SAYREVILLE, NEW JERSEY

ADJOINS SHEET NO. 10

ADJOINS SHEET NO. 1.03

ADJOINS SHEET NO. 8