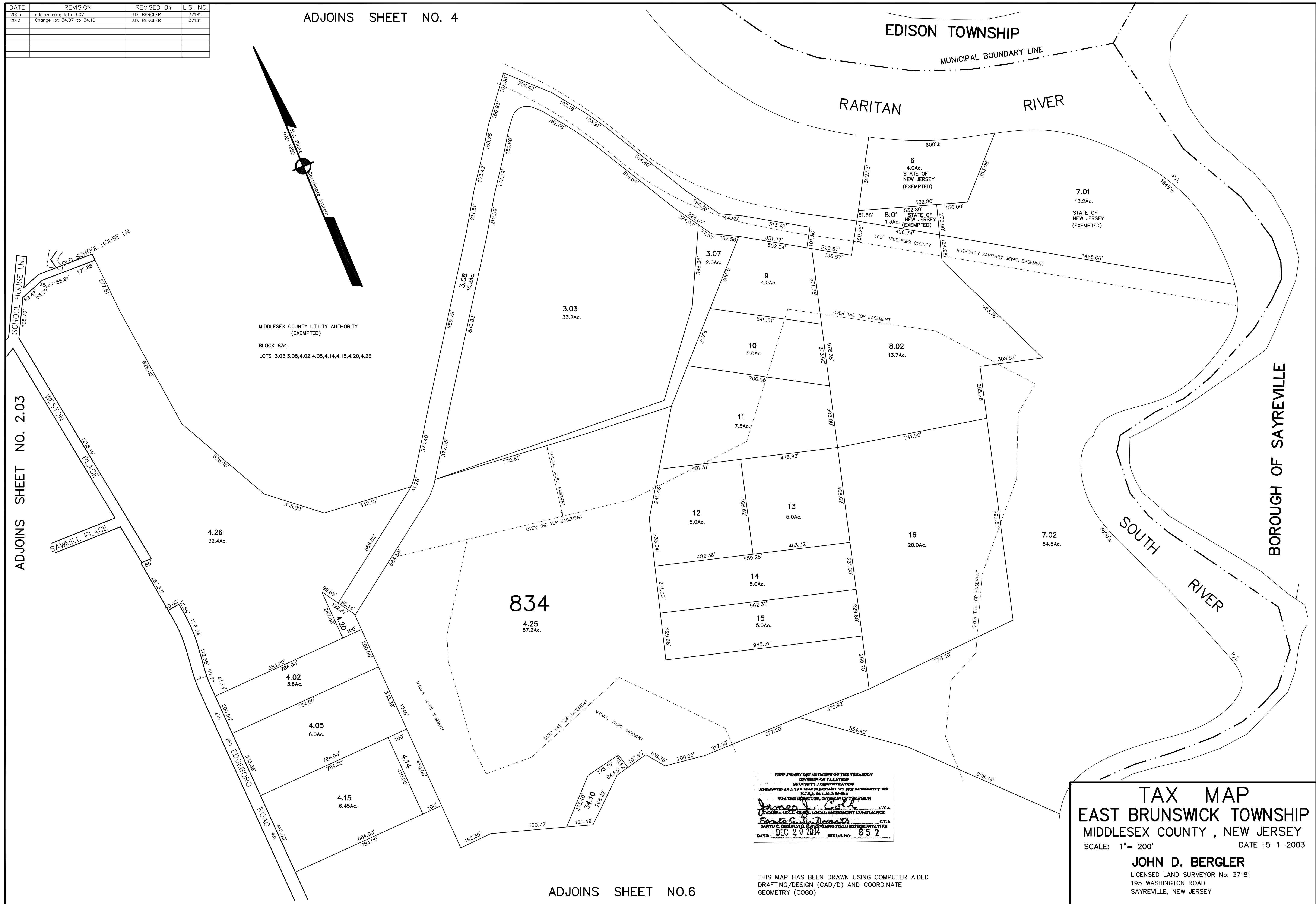
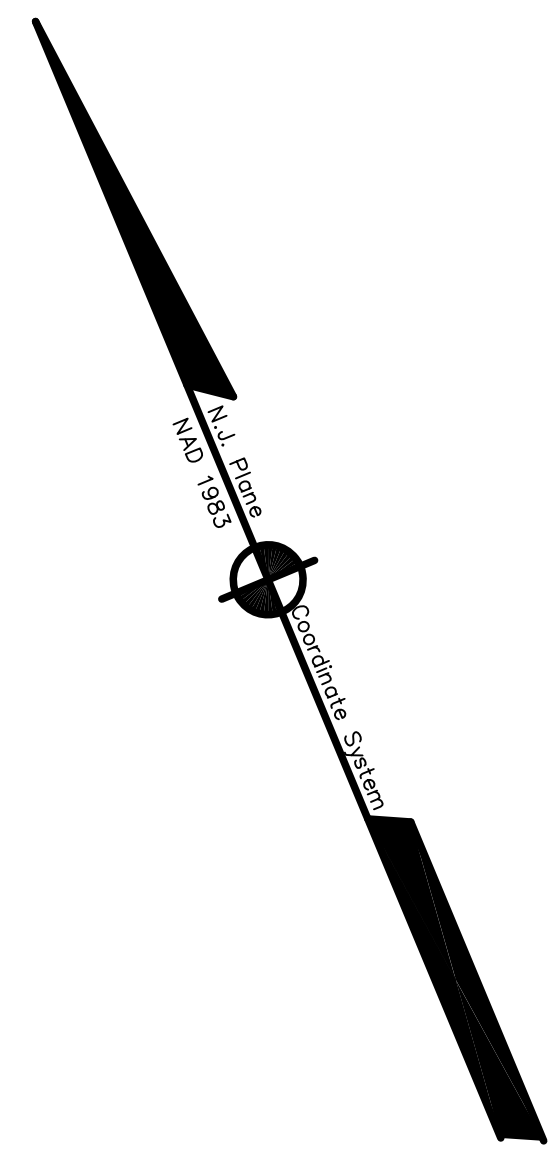


DATE	REVISION	REVISED BY	L.S. NO.
2005	add missing lots 3.07	J.D. BERGLER	37181
2013	Change lot 34.07 to 34.10	J.D. BERGLER	37181

ADJOINS SHEET NO. 4



ADJOINS SHEET NO.6

NEW JERSEY DEPARTMENT OF THE TREASURY
 DIVISION OF TAXATION
 PROPERTY ADJUSTMENT
 APPROVED AS A TAX MAP PURSUANT TO THE AUTHORITY OF
 N.J.A.C. 17:27 & 17:28
 FOR THE DIRECTOR, DIVISION OF TAXATION
 JAMES J. COLE, CHIEF, LOCAL ASSESSMENT COMPLIANCE
 JOHN D. BERGLER, LICENSED LAND SURVEYOR
 DATE: DEC 20 2004 SERIAL NO.: 852

THIS MAP HAS BEEN DRAWN USING COMPUTER AIDED
 DRAFTING/DESIGN (CAD/D) AND COORDINATE
 GEOMETRY (COGO)

TAX MAP
EAST BRUNSWICK TOWNSHIP
 MIDDLESEX COUNTY, NEW JERSEY
 SCALE: 1" = 200' DATE: 5-1-2003
JOHN D. BERGLER
 LICENSED LAND SURVEYOR No. 37181
 195 WASHINGTON ROAD
 SAYREVILLE, NEW JERSEY