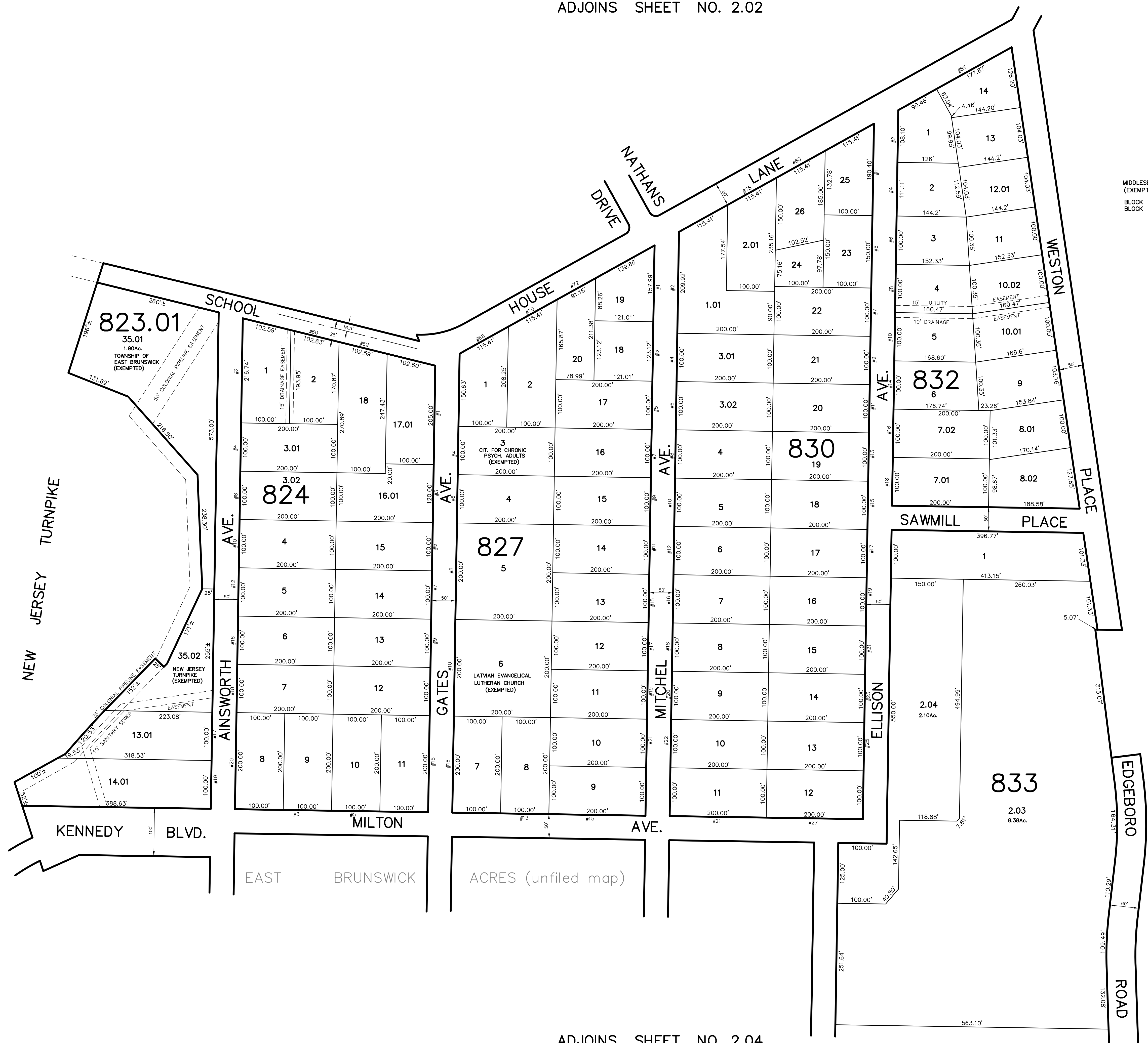


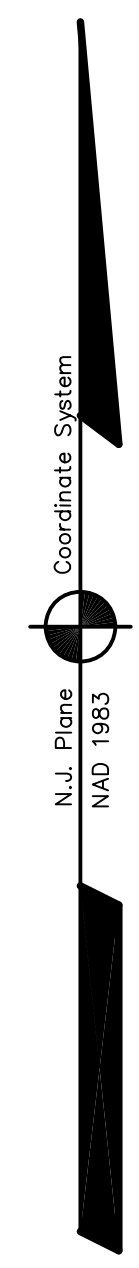
ADJOINS SHEET NO. 2.02

ADJOINS SHEET NO. 2.01

ADJOINS SHEET NO. 5



MIDDLESEX COUNTY UTILITY AUTH.
 (EXEMPTED)
 BLOCK 832 LOTS 8.01,8.02,9.10,10.01,10.02,11,12.01,13,14,
 BLOCK 833 LOT 1



NEW JERSEY DEPARTMENT OF THE TREASURY
 DIVISION OF TAXATION
 PROPERTY ADMINISTRATION
 APPROVED AS A TAX MAP PURSUANT TO THE AUTHORITY OF
 N.J.A.C. 17:27.6 & 17:27.7
 FOR THE DIRECTOR, DIVISION OF TAXATION
James J. Cole C.T.A.
 JAMES J. COLE, CHIEF, LOCAL ASSESSMENT COMPLIANCE
Samuel J. Demaree C.T.A.
 SAMUEL J. DEMAREE, SENIOR FIELD REPRESENTATIVE
 DATE: DEC 20 2004 SERIAL NO.: 852

THIS MAP HAS BEEN DRAWN USING COMPUTER AIDED
 DRAFTING/DESIGN (CAD/D) AND COORDINATE
 GEOMETRY (COGO)

TAX MAP
EAST BRUNSWICK TOWNSHIP
 MIDDLESEX COUNTY, NEW JERSEY
 SCALE: 1"= 100' DATE :5-1-2003
JOHN D. BERGLER
 LICENSED LAND SURVEYOR No. 37181
 195 WASHINGTON ROAD
 SAYREVILLE, NEW JERSEY

ADJOINS SHEET NO. 2.04