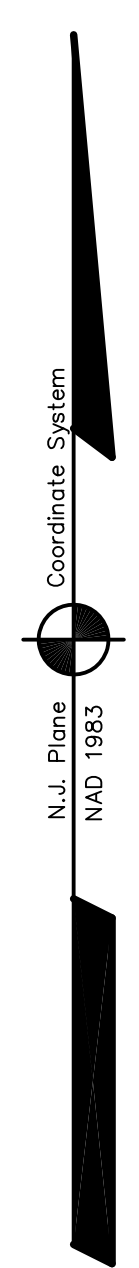
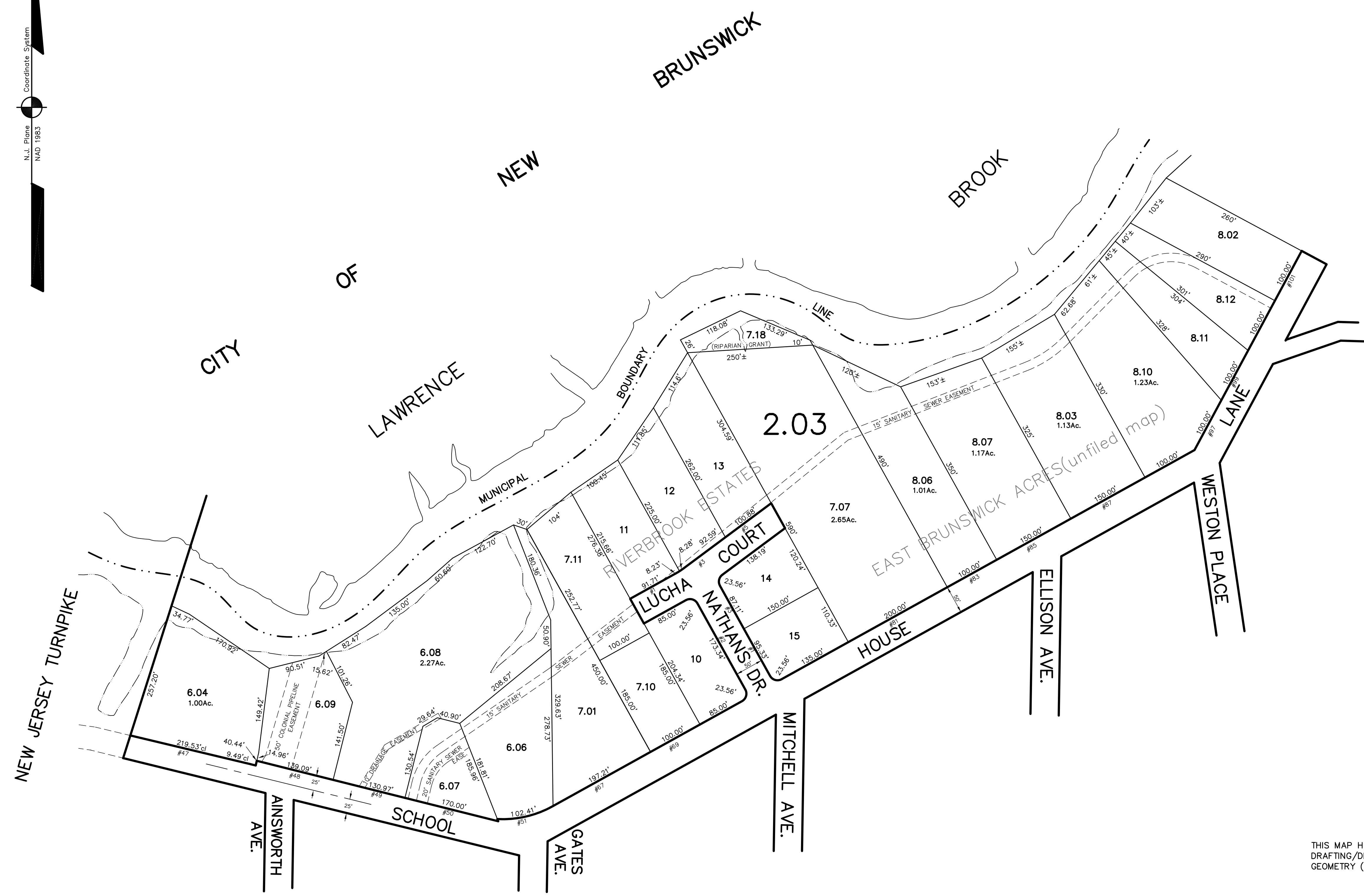


DATE	REVISION	REVISED BY	L.S. NO.
2010	minor sub block 2.03 Lots 6.07-6.09	Michael McGurt	38338



ADJOINS SHEET NO. 1.04

ADJOINS SHEET NO. 4



ADJOINS SHEET NO. 2.03

THIS MAP HAS BEEN DRAWN USING COMPUTER AIDED DRAFTING/DESIGN (CAD/D) AND COORDINATE GEOMETRY (COGO)

NEW JERSEY DEPARTMENT OF THE TREASURY
 DIVISION OF TAXATION
 PROPERTY ADMINISTRATION
 APPROVED AS A TAX MAP PURSUANT TO THE AUTHORITY OF
 N.J.A.C. 17:27 & 17:28
 FOR THE DIRECTOR, DIVISION OF TAXATION
 JAMES J. COLE, COUNTY LOCAL ASSESSMENT COMPLIANCE C.T.A.
 JOHN D. BERGLER, COUNTY LOCAL ASSESSMENT COMPLIANCE C.T.A.
 DATE: DEC 20 2004 SERIAL NO. 852

TAX MAP
EAST BRUNSWICK TOWNSHIP
 MIDDLESEX COUNTY, NEW JERSEY
 SCALE: 1" = 100' DATE: 5-1-2003
JOHN D. BERGLER
 LICENSED LAND SURVEYOR No. 37181
 195 WASHINGTON ROAD
 SAYREVILLE, NEW JERSEY