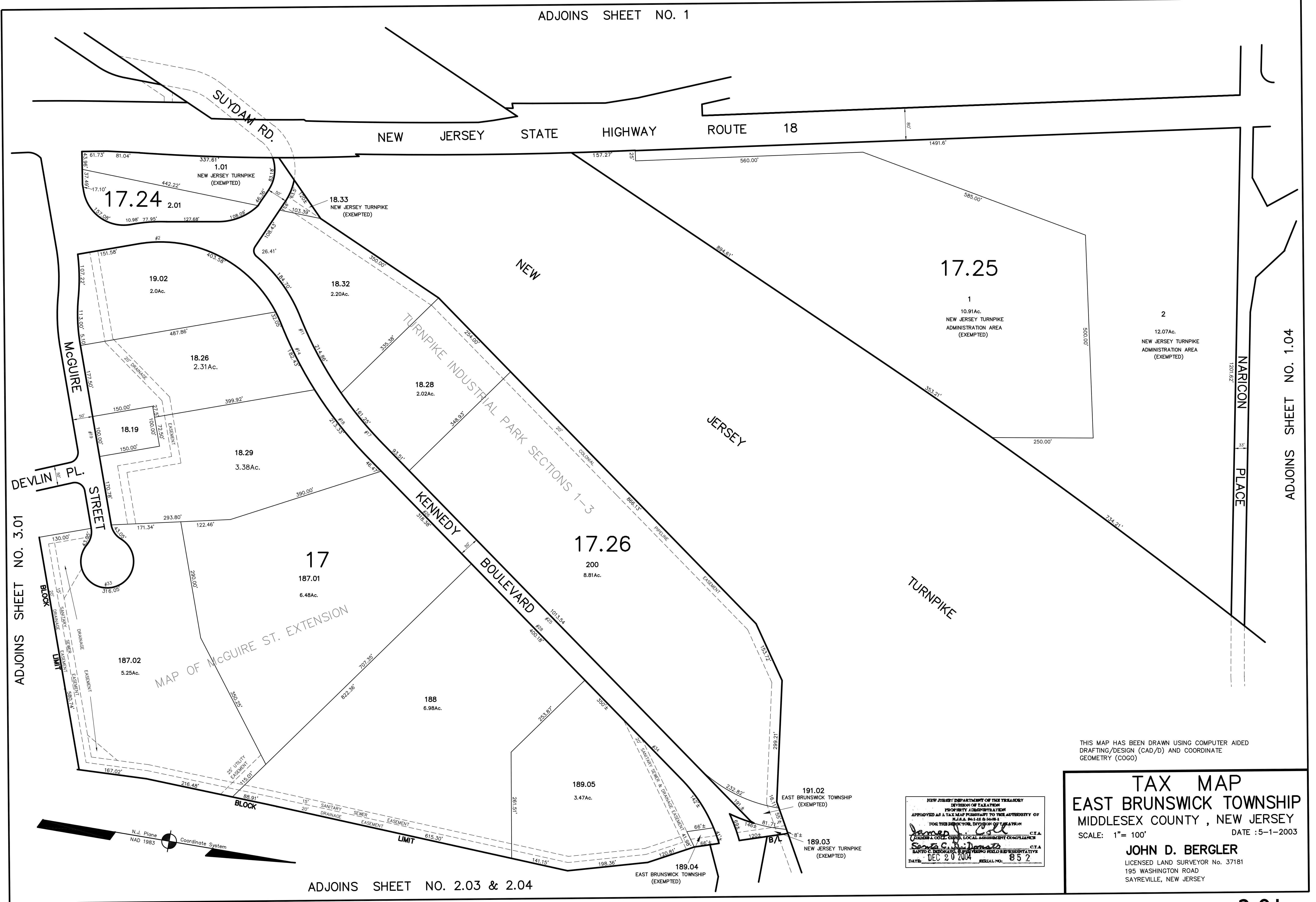


ADJOINS SHEET NO. 1



ADJOINS SHEET NO. 3.01

ADJOINS SHEET NO. 1.04

THIS MAP HAS BEEN DRAWN USING COMPUTER AIDED DRAFTING/DESIGN (CAD/D) AND COORDINATE GEOMETRY (COGO)

**TAX MAP**  
**EAST BRUNSWICK TOWNSHIP**  
**MIDDLESEX COUNTY, NEW JERSEY**

SCALE: 1" = 100' DATE: 5-1-2003

**JOHN D. BERGLER**  
 LICENSED LAND SURVEYOR No. 37181  
 195 WASHINGTON ROAD  
 SAYREVILLE, NEW JERSEY

NEW JERSEY DEPARTMENT OF THE TREASURY  
 DIVISION OF TAXATION  
 APPROVED AS A TAX MAP PURSUANT TO THE AUTHORITY OF  
 P.L. 86-181, 84-155 & 80-81  
 FOR THE DIRECTOR, DIVISION OF TAXATION  
*James J. Cole* C.T.A.  
*Santo C. DiDomenico* C.T.A.  
 DATE: DEC 20 2004 SERIAL NO. 852

ADJOINS SHEET NO. 2.03 & 2.04