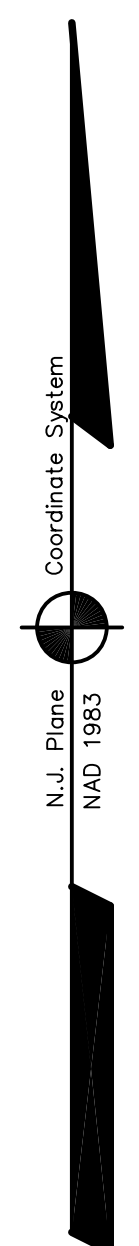
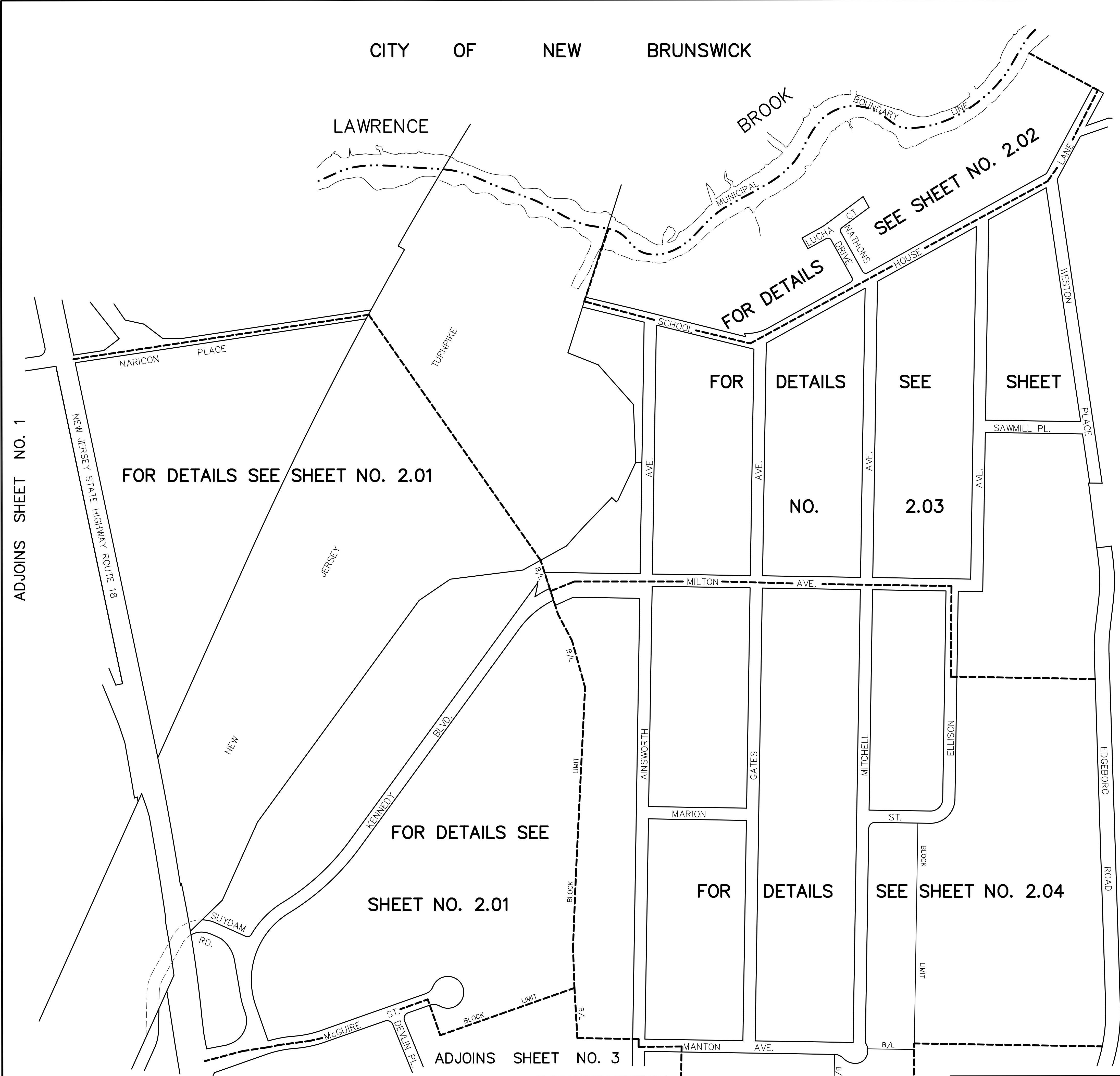


CITY OF NEW BRUNSWICK



NEW JERSEY DEPARTMENT OF THE TREASURY
 DIVISION OF TAXATION
 PROPERTY ADMINISTRATION
 APPROVED AS A TAX MAP PREPARED TO THE AUTHORITY OF
 N.J.S.A. 54:27-10
 FOR THE DIRECTOR, DIVISION OF TAXATION
James J. Cole C.T.A.
 TOWN & COUNTY LOCAL ASSESSMENT COMPLIANCE
Sandra C. DeMaio C.T.A.
 SALES & MARKETING REPRESENTATIVE
 DATE: DEC 20 2004 SERIAL NO: 852

THIS MAP HAS BEEN DRAWN USING COMPUTER AIDED
 DRAFTING/DESIGN (CAD/D) AND COORDINATE
 GEOMETRY (COGO)

TAX MAP
EAST BRUNSWICK TOWNSHIP
 MIDDLESEX COUNTY, NEW JERSEY
 SCALE: 1" = 200' DATE: 5-1-2003
JOHN D. BERGLER
 LICENSED LAND SURVEYOR No. 37181
 195 WASHINGTON ROAD
 SAYREVILLE, NEW JERSEY

ADJOINS SHEET NO. 1

ADJOINS SHEET NO. 4,5