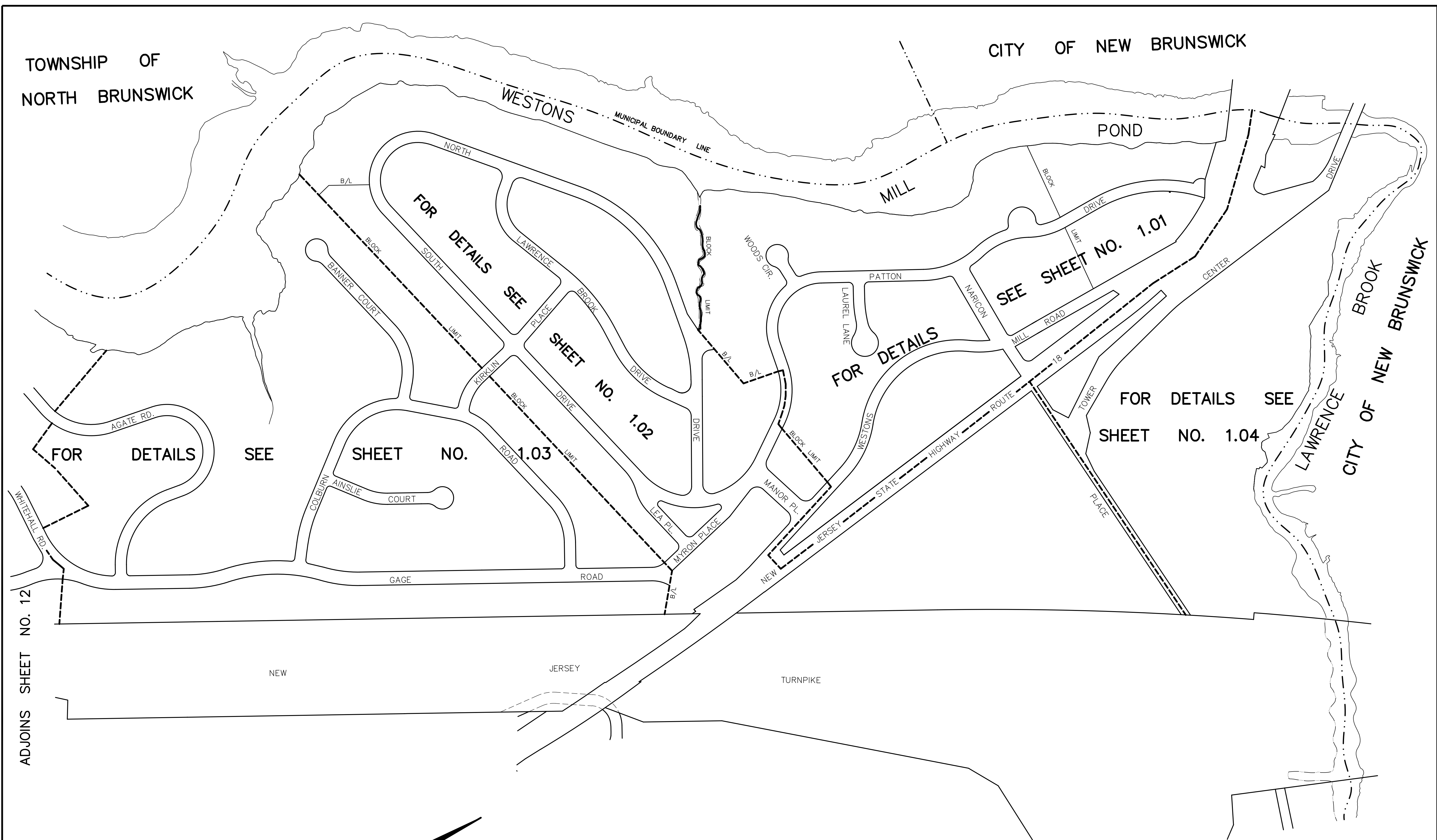


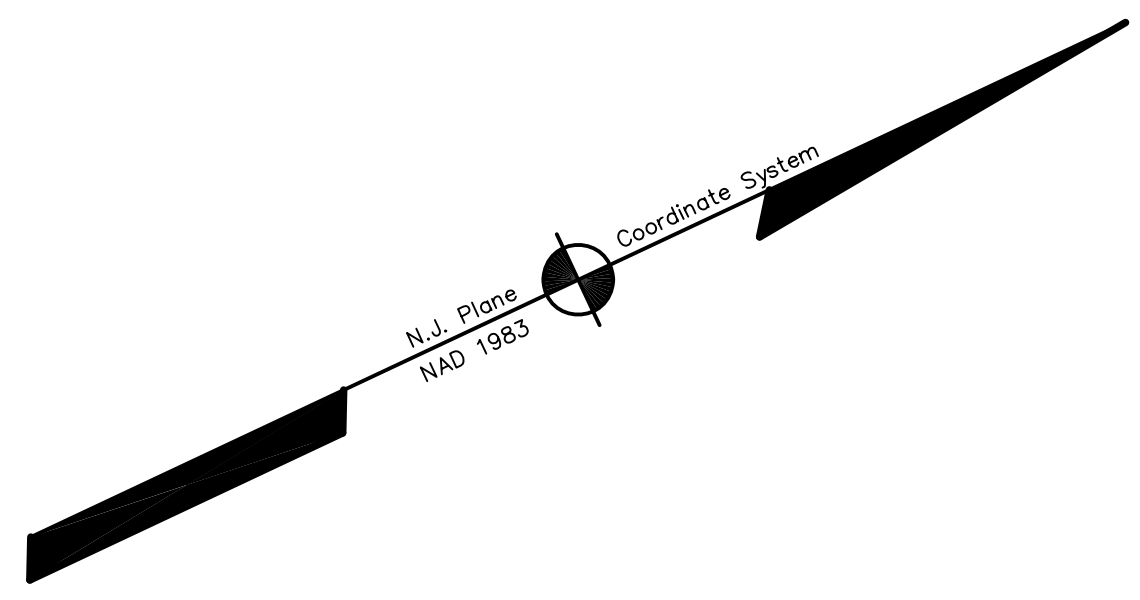
TOWNSHIP OF  
NORTH BRUNSWICK

CITY OF NEW BRUNSWICK



ADJOINS SHEET NO. 12

ADJOINS SHEET NO. 5



NEW JERSEY DEPARTMENT OF THE TREASURY  
DIVISION OF TAXATION  
PROPERTY ADMINISTRATION  
APPROVED AS A TAX MAP PURSUANT TO THE AUTHORITY OF  
N.J.S.A. 54:48 & 54:49-1  
FOR THE DIRECTOR, DIVISION OF TAXATION  
*[Signature]* C.T.A.  
JAMES J. COLE, CHIEF, LOCAL ASSESSMENT COMPLIANCE  
*[Signature]* C.T.A.  
SANTO C. BORDONE, COUNTY FIELD REPRESENTATIVE  
DATE: DEC 20 2004 SERIAL NO. 852

THIS MAP HAS BEEN DRAWN USING COMPUTER AIDED  
DRAFTING/DESIGN (CAD/D) AND COORDINATE  
GEOMETRY (COGO)

**TAX MAP**  
EAST BRUNSWICK TOWNSHIP  
MIDDLESEX COUNTY, NEW JERSEY  
SCALE: 1" = 200' DATE: 5-1-2003  
**JOHN D. BERGLER**  
LICENSED LAND SURVEYOR No. 37181  
195 WASHINGTON ROAD  
SAYREVILLE, NEW JERSEY