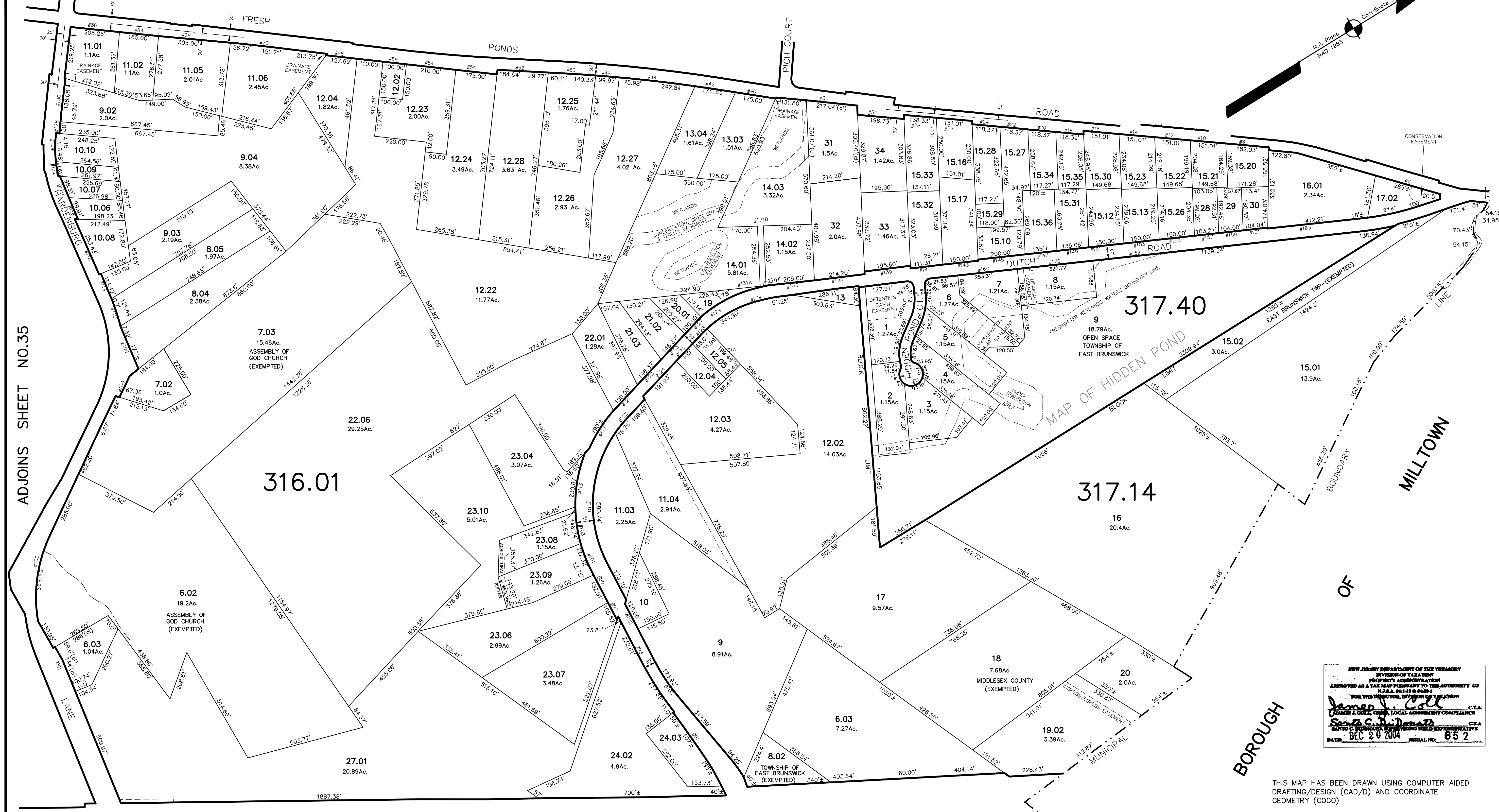


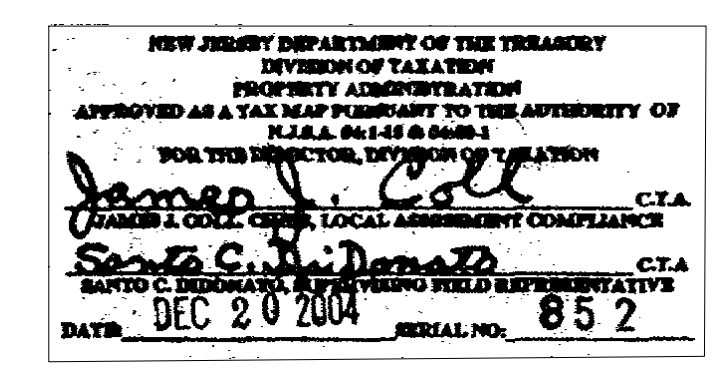
ADJOINS SHEET NO. 30 & 31

DATE	REVISION	REVISED BY	L.S. NO.
2005	minor subd. 316.01/23.05	J.D. BERGLER	37181
2006	minor subd. 316.01/11.04	J.D. BERGLER	37181
2006	major subd. 317.14/14.04	J.D. BERGLER	37181
2013	remove #150FPR street address	J.D. BERGLER	37181
2014	minor subd. 316.01/16.01/17.02	J.D. BERGLER	37181
2014	merge 316.01/23.04/27 into 316.01/27.01	J.D. BERGLER	37181
2014	equipment + added address 316.01/17.02	J.D. BERGLER	37181
2016	minor sub. 14.01,14.02,14.03	J.D. BERGLER	37181
2021	316.01/14.01 #131 Dutch-316.01/14.03-25' 3/4" to Dutch	J.D. BERGLER	37181



ADJOINS SHEET NO.35

BOROUGH



THIS MAP HAS BEEN DRAWN USING COMPUTER AIDED DRAFTING/DESIGN (CAD/D) AND COORDINATE GEOMETRY (COGO)

**TAX MAP**  
**EAST BRUNSWICK TOWNSHIP**  
 MIDDLESEX COUNTY, NEW JERSEY  
 SCALE: 1"= 200' DATE :5-1-2003  
**JOHN D. BERGLER**  
 LICENSED LAND SURVEYOR No. 37181  
 195 WASHINGTON ROAD  
 SAYREVILLE, NEW JERSEY

ADJOINS SHEET NO. 37 & 38