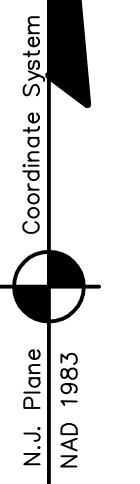
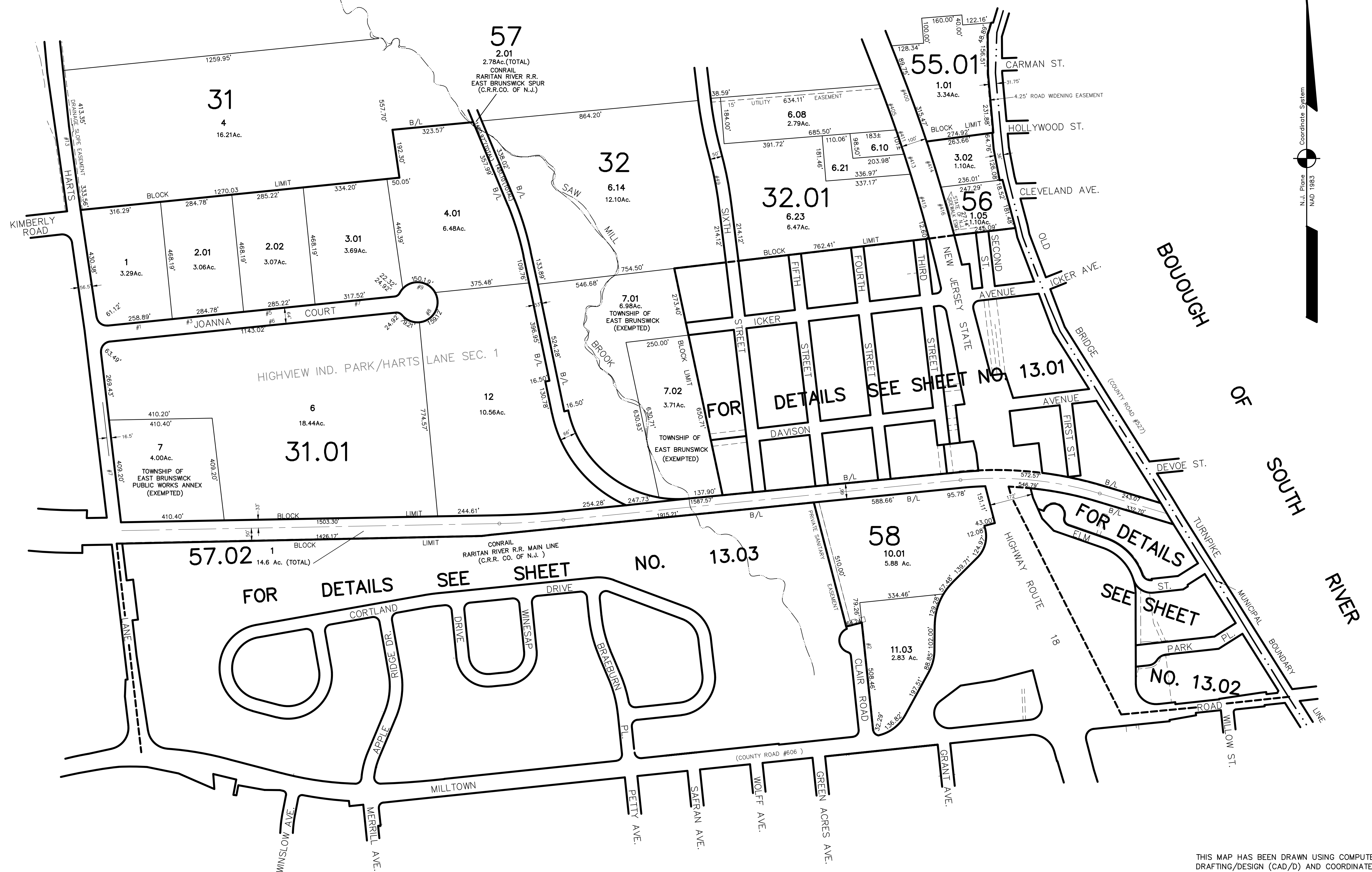


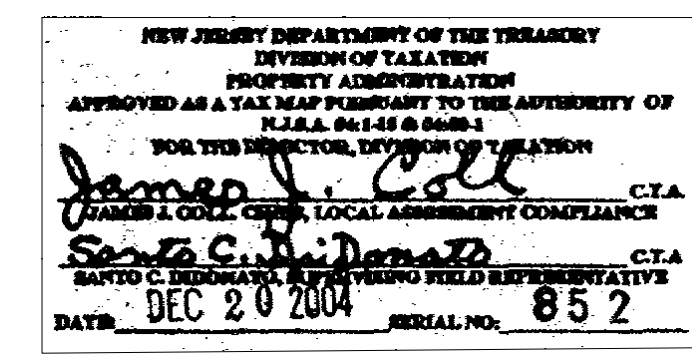
DATE	REVISION	REVISED BY	L.S. NO.
2005	new lot 55.01/1.01	J.D. BERGLER	37181
2016	odd street #13	J.D. BERGLER	37181
2023	sidewalk easement	J.D. BERGLER	37181

ADJOINS SHEET NO. 11

ADJOINS SHEET NO. 10&12.03



THIS MAP HAS BEEN DRAWN USING COMPUTER AIDED DRAFTING/DESIGN (CAD/D) AND COORDINATE GEOMETRY (COGO)



**TAX MAP**  
**EAST BRUNSWICK TOWNSHIP**  
**MIDDLESEX COUNTY, NEW JERSEY**  
 SCALE: 1" = 200'      DATE: 5-1-2003  
**JOHN D. BERGLER**  
 LICENSED LAND SURVEYOR No. 37181  
 195 WASHINGTON ROAD  
 SAYREVILLE, NEW JERSEY

ADJOINS SHEET NO. 15.02