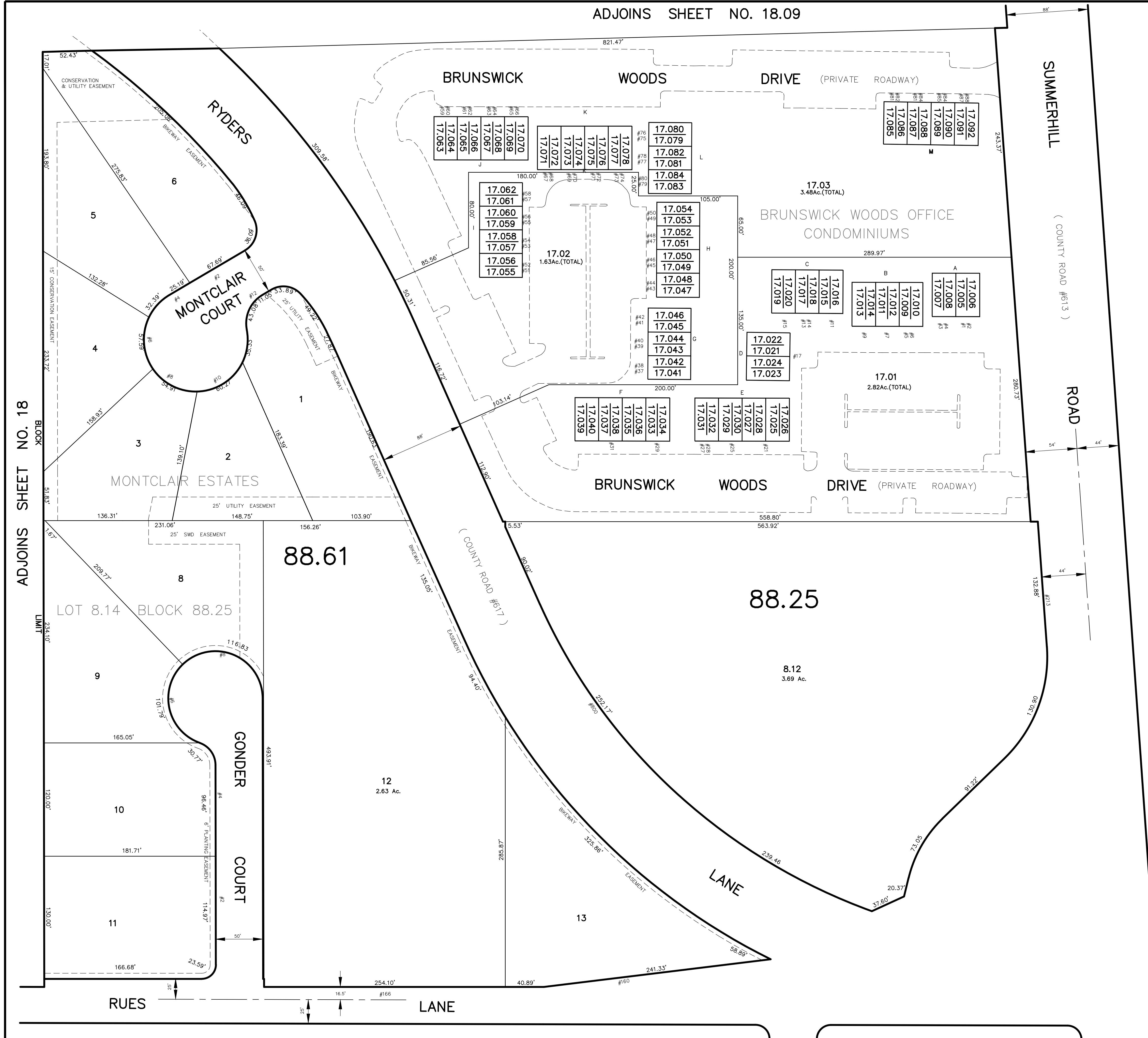
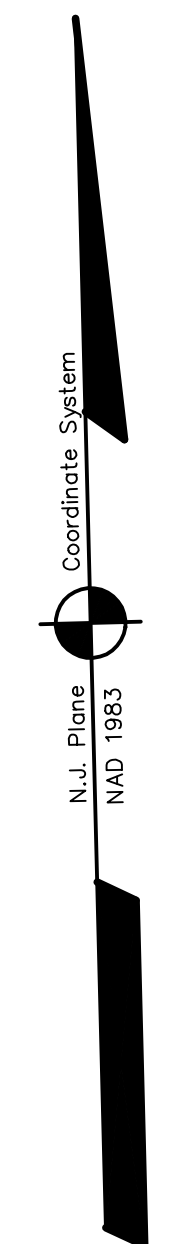


ADJOINS SHEET NO. 18.09

DATE	REVISION	REVISED BY	L.S. NO.
2006	new subd. Conder Ct.	J.D. BERGLER	37181



#38 17.024 — UPPER LEVEL
 #37 17.023 — LOWER LEVEL
 B — BUILDING NUMBER



NEW JERSEY DEPARTMENT OF THE TREASURY
 DIVISION OF TAXATION
 PROPERTY ADMINISTRATION
 APPROVED AS A TAX MAP PREPARATORY TO THE ADOPTION OF
 P.L. 2006-148 R.S. 4
 FOR THE DIRECTOR, DIVISION OF TAXATION
James J. Cole C.T.A.
 JAMES J. COLE, CHIEF, LOCAL ASSESSMENT COMPLIANCE
Samuel C. H. Demas C.T.A.
 SAMUEL C. H. DEMAS, SENIOR FIELD REPRESENTATIVE
 DATE: DEC 20 2004 SERIAL NO. 852

THIS MAP HAS BEEN DRAWN USING COMPUTER AIDED
 DRAFTING/DESIGN (CAD/D) AND COORDINATE
 GEOMETRY (COGO)

TAX MAP
EAST BRUNSWICK TOWNSHIP
MIDDLESEX COUNTY, NEW JERSEY
 SCALE: 1"=50' DATE :5-1-2003
JOHN D. BERGLER
 LICENSED LAND SURVEYOR No. 37181
 195 WASHINGTON ROAD
 SAYREVILLE, NEW JERSEY

ADJOINS SHEET NO. 18