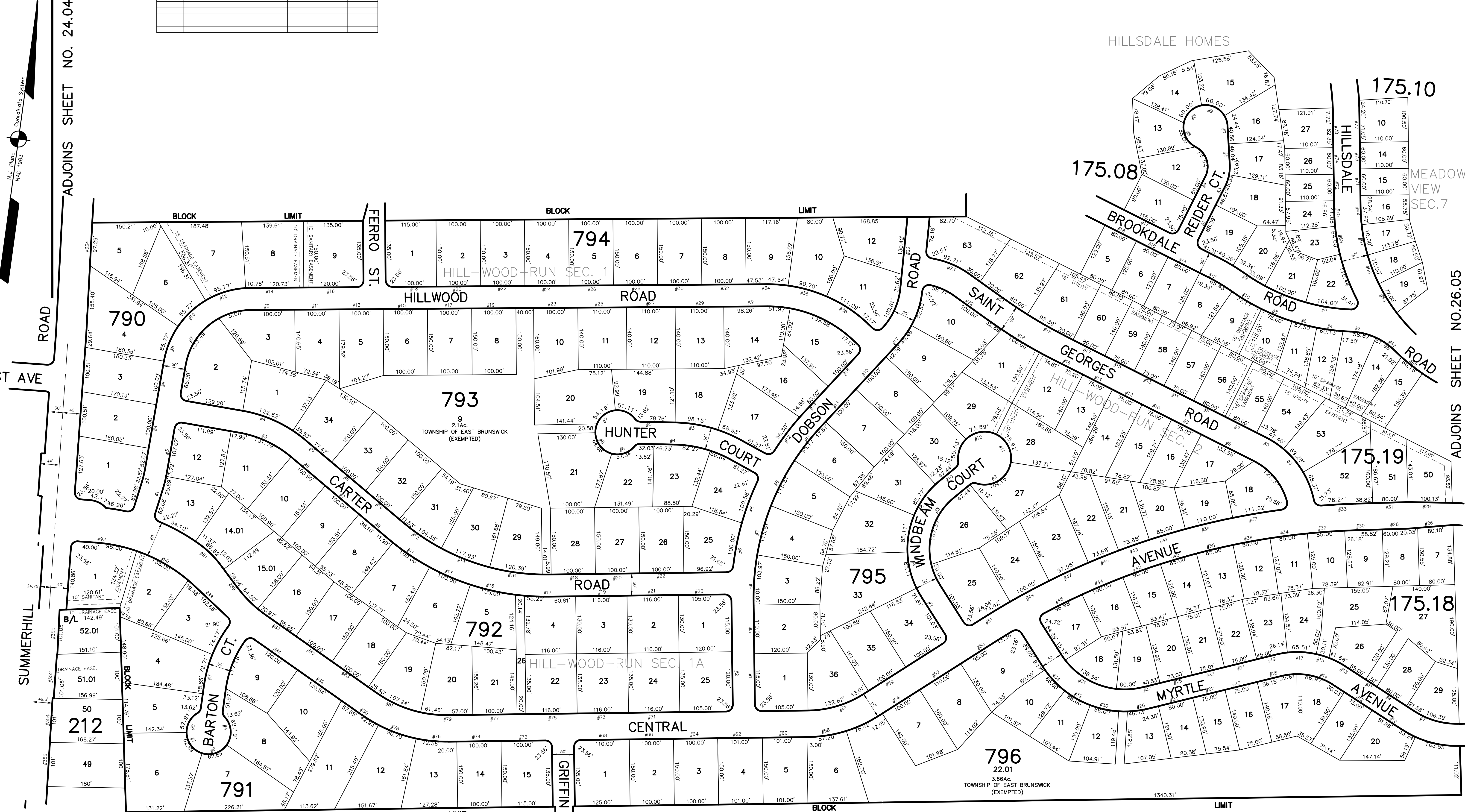


ADJOINS SHEET NO. 26.01

DATE	REVISION	REVISED BY	L.S. NO.
2007	RD WIDENING 212/51,52	J.D. BERGLER	37181



**TAX MAP**  
**EAST BRUNSWICK TOWNSHIP**  
 MIDDLESEX COUNTY, NEW JERSEY  
 SCALE: 1" = 100'  
 DATE: 5-1-2003  
**JOHN D. BERGLER**  
 LICENSED LAND SURVEYOR No. 37181  
 195 WASHINGTON ROAD  
 SAYREVILLE, NEW JERSEY

NEW JERSEY DEPARTMENT OF THE TREASURY  
 DIVISION OF TAXATION  
 APPROVED AS A TAX MAP PURSUANT TO THE AUTHORITY OF  
 P.L.A. 1944-8 (N.J.S. 17:27)  
 FOR THE DIRECTOR, DIVISION OF TAXATION  
*James J. Cole* C.T.A.  
*James J. Cole* C.T.A.  
 DATE: DEC 20 2004 SERIAL NO. 852

THIS MAP HAS BEEN DRAWN USING COMPUTER AIDED  
 DRAFTING/DESIGN (CAD/D) AND COORDINATE  
 GEOMETRY (COGO)

ADJOINS SHEET NO. 26.04